

Coaxial Switch

50Ω SPDT, TTL Driver, Absorptive DC to 5 GHz

ZYSWA-2-50DR



Maximum Ratings

Operating Temperature	-20°C to 85°C
Storage Temperature	-55°C to 100°C
Input Power	+20dBm
Permanent damage may occur if any of these limits are exceeded.	

Coaxial/Pin Connections

RF IN	3
RF OUT 1	2
RF OUT 2	1
TTL IN	4
+5V	+5VDC
-5V	-5VDC

Features

- wideband, DC to 5 GHz
- fast rise/fall time, 6ns typ.
- low video break thru, 30 mV P-P typ.

Applications

- antenna switching
- instrumentation
- cellular/PCN
- transmitters/receivers
- satellite communications

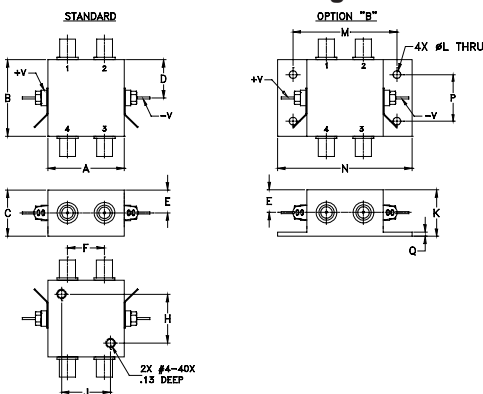
CASE STYLE: ZZ121

Connectors	Model	Price	Qty.
SMA	ZYSWA-2-50DR	\$69.95	(1-9)
BRACKET (OPTION "B")		\$2.50	(1+)

Electrical Specifications

FREQ. (GHz)	INSERTION LOSS (dB)						1dB COMPR. (dBm)						IN-OUT ISOLATION (dB)					
	DC-500 MHz		500-2000 MHz		2000-5000 MHz		DC-500 MHz		500-2000 MHz		2000-5000 MHz		DC-500 MHz		500-2000 MHz		2000-5000 MHz	
f _L f _U	Typ.	Max.	Typ.	Max.	Typ.	Max.	Typ.	Min.	Typ.	Min.	Typ.	Min.	Typ.	Min.	Typ.	Min.	Typ.	Min.
DC 5	1.1	1.5	1.4	1.9	1.9	—	18	13	20	17	22.5	20	42	38	31	27	20	19

Outline Drawing



Outline Dimensions (inch/mm)

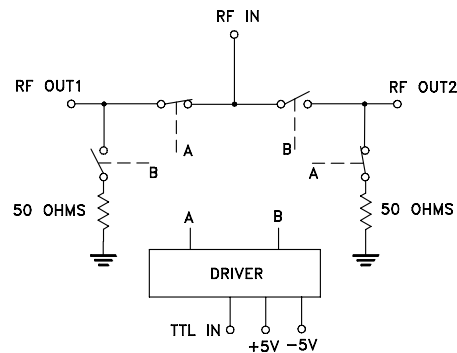
A	B	C	D	E	F	G	H
1.25	1.25	0.75	0.63	0.38	0.61	--	0.800
31.75	31.75	19.05	16.00	9.65	15.49	--	20.32
J	K	L	M	N	P	Q	wt
0.800	0.76	0.125	1.688	2.18	0.75	0.07	grams
20.32	19.30	3.18	42.88	55.37	19.05	1.78	85

Additional Specifications			
Control Voltage	0/5.5, max.	VSWR:(1)	1.4 typ., 2.0 max. DC to 3 GHz
Low Threshold, max.	0.8	Rise/Fall time (10%-90%), ns Switching time, 50% of Control to 90% RF (Turn-on), ns 10% RF (Turn-off), ns	2.5 max. 3 to 5 GHz
High Threshold, min.	2.0		6 typ., 12 max.
Control Current, mA	High V: 2 typ., 5 max Low V: 0.2 max.		20 typ., 40 max.
Positive Supply, V	+5+0.5/-0.1	**Video Leakage, mVp-p 0/-5V Control	30 typ.
Negative Supply, V	-5-0.5/+0.1		
Positive Supply Current, mA	20 max.		
Negative Supply Current, mA	20 max.		

Control Port	RF outputs	
	1	2
Low	On	Off
High	Off	On

1. OFF state at RF output is low impedance
 ** Video leakage or break through is defined as leakage of TTL switching signal to RF output ports.
 2. All RF connections must be DC blocked or held at 0V DC

Electrical Schematic



Mini-Circuits
 ISO 9001 ISO 14001 AS 9100 CERTIFIED

For detailed performance specs & shopping online see web site

P.O. Box 350166, Brooklyn, New York 11235-0003 (718) 934-4500 Fax (718) 332-4661 The Design Engineers Search Engine Provides ACTUAL Data Instantly at minicircuits.com

IF/RF MICROWAVE COMPONENTS

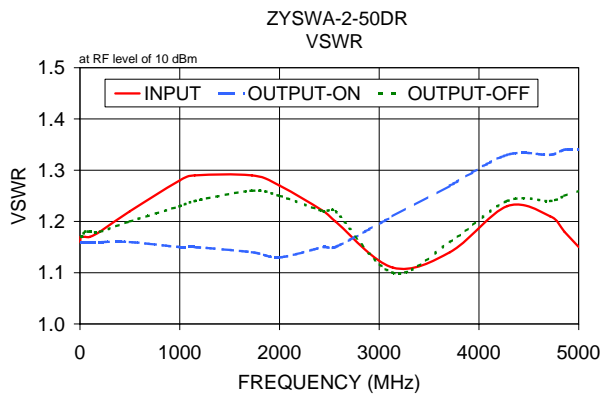
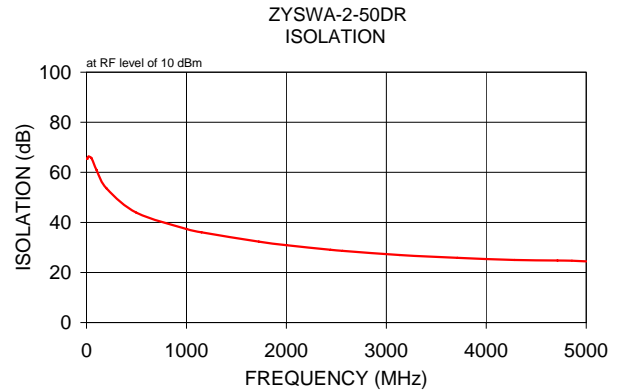
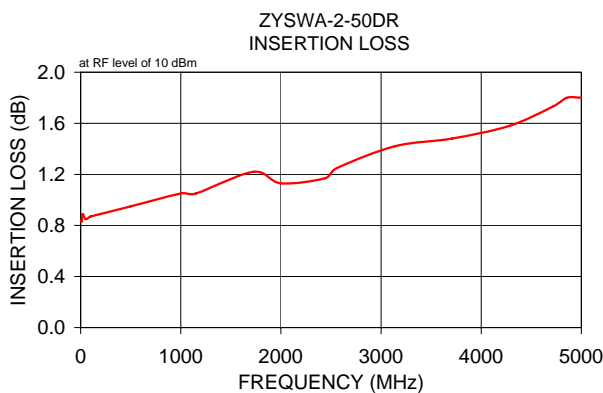
Notes: 1. Performance and quality attributes and conditions not expressly stated in this specification sheet are intended to be excluded and do not form a part of this specification sheet. 2. Electrical specifications and performance data contained herein are based on Mini-Circuits' applicable established test performance criteria and measurement instructions. 3. The parts covered by this specification sheet are subject to Mini-Circuits standard limited warranty and terms and conditions (collectively, "Standard Terms"); Purchasers of this part are entitled to the rights and benefits contained therein. For a full statement of the Standard Terms and the exclusive rights and remedies thereunder, please visit Mini-Circuits' website at www.minicircuits.com/MCLStore/terms.jsp.

REV. C
 M99070
 ZYSWA-2-50DR
 ED-6966/2
 DJ/TD/CP/AM
 090108

ZYSWA-2-50DR

Typical Performance Data

FREQ. (MHz)	ON				OFF				VSWR		
	TTL Low @ 0V		INSERTION LOSS (dB)		TTL High @ 5V		ISOLATION (dB)		IN	OUT	
	IN-OUT 1		AMP. UNBAL.		IN-OUT 1		DELTA			ON	OFF
	\bar{x}	σ	\bar{x}	σ	\bar{x}	σ	\bar{x}	σ	\bar{x}	\bar{x}	\bar{x}
3.00	0.84	0.01	0.01	0.01	65.32	0.46	0.44	0.35	1.16	1.16	1.17
5.00	0.83	0.01	0.01	0.01	65.59	1.00	0.97	0.43	1.17	1.16	1.17
10.00	0.83	0.02	0.01	0.01	65.42	0.63	0.56	0.20	1.17	1.16	1.17
20.00	0.89	0.04	0.02	0.02	66.30	0.68	0.76	0.63	1.17	1.16	1.17
50.00	0.85	0.01	0.01	0.01	65.63	1.12	1.37	0.50	1.17	1.16	1.18
100.00	0.87	0.02	0.01	0.01	61.02	0.81	1.22	1.06	1.17	1.16	1.18
200.00	0.89	0.02	0.01	0.01	53.60	0.42	0.37	0.32	1.18	1.16	1.18
500.00	0.95	0.02	0.00	0.01	43.89	0.27	0.52	0.15	1.22	1.16	1.20
1000.00	1.05	0.02	0.01	0.01	37.39	0.23	0.62	0.12	1.28	1.15	1.23
1150.64	1.05	0.02	0.01	0.01	36.05	0.25	0.62	0.11	1.29	1.15	1.24
1724.45	1.22	0.02	0.04	0.02	32.34	0.30	0.73	0.08	1.29	1.14	1.26
2000.00	1.13	0.01	0.01	0.01	30.92	0.28	0.76	0.06	1.27	1.13	1.25
2441.73	1.17	0.01	0.01	0.01	29.06	0.27	0.69	0.11	1.22	1.15	1.22
2561.27	1.25	0.03	0.02	0.01	28.66	0.27	0.62	0.15	1.20	1.15	1.22
3135.09	1.42	0.05	0.06	0.00	26.96	0.30	0.23	0.14	1.11	1.21	1.10
3708.91	1.48	0.04	0.06	0.02	25.86	0.28	0.33	0.18	1.14	1.27	1.16
4282.73	1.58	0.06	0.12	0.04	25.02	0.36	0.41	0.23	1.23	1.33	1.24
4713.09	1.73	0.05	0.02	0.01	24.78	0.31	0.62	0.26	1.21	1.33	1.24
4856.55	1.80	0.05	0.03	0.02	24.69	0.32	0.65	0.26	1.18	1.34	1.25
5000.00	1.80	0.06	0.04	0.02	24.46	0.30	0.58	0.26	1.15	1.34	1.26



Mini-Circuits
ISO 9001 ISO 14001 AS 9100 CERTIFIED

For detailed performance specs
& shopping online see web site

P.O. Box 350166, Brooklyn, New York 11235-0003 (718) 934-4500 Fax (718) 332-4661 The Design Engineers Search Engine Provides ACTUAL Data Instantly at minicircuits.com

IF/RF MICROWAVE COMPONENTS

Notes: 1. Performance and quality attributes and conditions not expressly stated in this specification sheet are intended to be excluded and do not form a part of this specification sheet. 2. Electrical specifications and performance data contained herein are based on Mini-Circuit's applicable established test performance criteria and measurement instructions. 3. The parts covered by this specification sheet are subject to Mini-Circuits standard limited warranty and terms and conditions (collectively, "Standard Terms"); Purchasers of this part are entitled to the rights and benefits contained therein. For a full statement of the Standard Terms and the exclusive rights and remedies thereunder, please visit Mini-Circuits' website at www.minicircuits.com/MCLStore/terms.jsp.