

Coaxial

Low Noise Amplifier

ZX60-542LN+

50Ω

4400 to 5400 MHz

Features

- low noise figure, 1.9 dB typ.
- output power, up to 10 dBm typ.
- reverse polarity protection

Applications

- front-end amplifier
- Satellite TV
- public safety
- astronomy
- weather
- defense & radar
- instrumentation
- test equipment



CASE STYLE: GA955

Connectors	Model	Price	Qty.
SMA	ZX60-542LN-S+	\$129.95 ea.	(1-9)

+ RoHS compliant in accordance with EU Directive (2002/95/EC)

The +Suffix has been added in order to identify RoHS Compliance. See our web site for RoHS Compliance methodologies and qualifications.

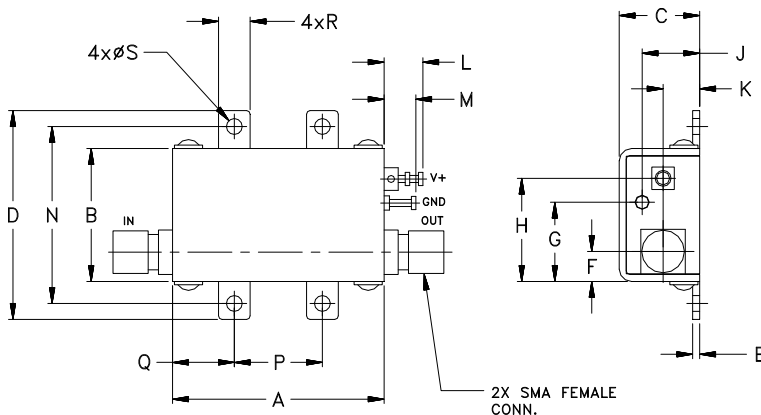
Electrical Specifications $T_{AMB}=25^{\circ}C$

MODEL NO.	FREQUENCY (MHz) f_L - f_U	DC VOLTS (V)	NOISE FIGURE (dB)		GAIN (dB)				MAXIMUM POWER (dBm)			3rd ORDER INTERCEPT POINT AT OUTPUT (dBm)	VSWR (:1) Typ.		DC OPERATING CURRENT @ Pin V+ (mA)	
			Typ.	Max.	Typ.	Min.	Typ.	Max.	Flatness	Output (1 dB Compr.)	Input (no damage)		Typ.	In	Out	Typ.
ZX60-542LN+	4400-5400	12.0	1.9	3.0	24	22	±0.3	±0.8	10	8	+13	23	1.5	1.5	60	80

Maximum Ratings

Operating Temperature	-40°C to 85°C case
Storage Temperature	-55°C to 100°C
DC Voltage	+13V
Power	0.96W

Outline Drawing



Outline Dimensions (inch/mm)

A	B	C	D	E	F	G	H	J	K	L	M	N	P	Q	R	S	wt
1.20	.75	.46	1.18	.04	.17	.45	.59	.33	.21	.22	.18	1.00	.50	.35	.18	.09	grams
30.48	19.05	11.68	29.97	1.02	4.32	11.43	14.99	8.38	5.33	5.59	4.57	25.40	12.70	8.89	4.57	2.29	35.00



P.O. Box 350166, Brooklyn, New York 11235-0003 (718) 934-4500 Fax (718) 332-4661 For detailed performance specs & shopping online see Mini-Circuits web site



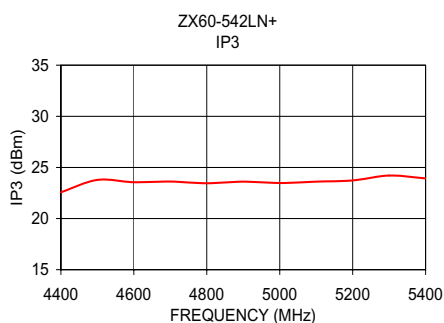
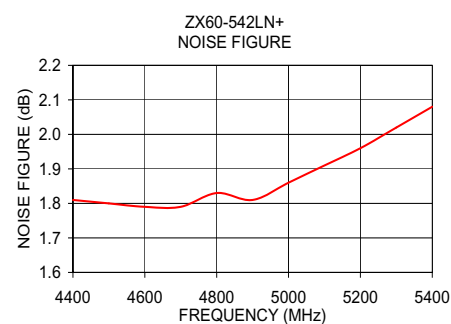
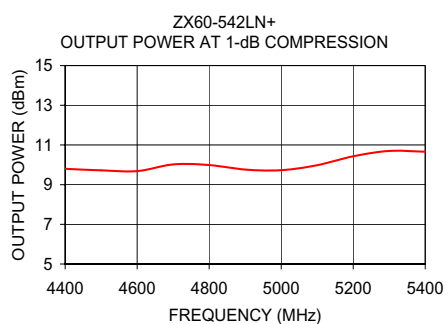
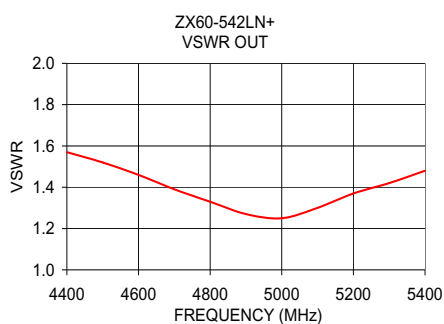
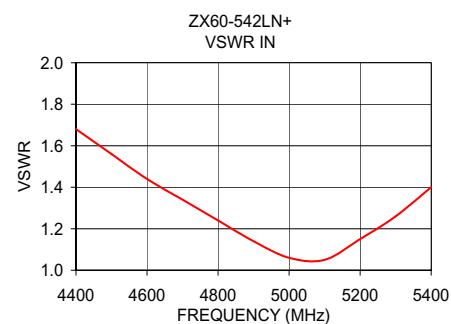
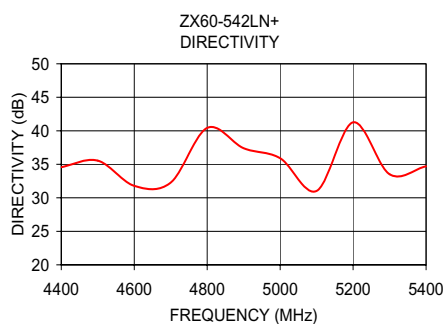
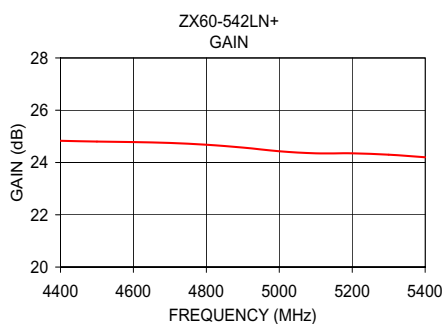
The Design Engineers Search Engine Provides ACTUAL Data Instantly From MINI-CIRCUITS At: www.minicircuits.com

IF/RF MICROWAVE COMPONENTS

Typical Performance Data/Curves at 25°C

ZX60-542LN+

FREQUENCY (MHz)	GAIN (dB)	DIRECTIVITY (dB)	VSWR IN (:1)	VSWR OUT (:1)	NOISE FIGURE (dB)	POUT at 1dB COMPR. (dBm)	IP3 (dBm)
4400.0	24.83	34.58	1.68	1.57	1.81	9.80	22.57
4500.0	24.80	35.55	1.56	1.52	1.80	9.72	23.78
4600.0	24.78	31.78	1.44	1.46	1.79	9.68	23.55
4700.0	24.75	32.27	1.34	1.39	1.79	10.02	23.62
4800.0	24.68	40.43	1.24	1.33	1.83	9.99	23.45
4900.0	24.57	37.39	1.14	1.27	1.81	9.76	23.61
5000.0	24.43	35.91	1.06	1.25	1.86	9.73	23.48
5100.0	24.35	31.03	1.05	1.30	1.91	9.98	23.61
5200.0	24.35	41.27	1.15	1.37	1.96	10.43	23.73
5300.0	24.30	33.52	1.26	1.42	2.02	10.70	24.21
5400.0	24.20	34.70	1.40	1.48	2.08	10.66	23.93



P.O. Box 350166, Brooklyn, New York 11235-0003 (718) 934-4500 Fax (718) 332-4661 For detailed performance specs & shopping online see Mini-Circuits web site

The Design Engineers Search Engine Provides ACTUAL Data Instantly From MINI-CIRCUITS At: www.minicircuits.com

IF/RF MICROWAVE COMPONENTS