

Low Noise Amplifier

ZX60-3800LN+

50Ω 3300 to 3800 MHz

Features

- Low noise figure 0.9 typ.
- +18 dBm typ. output power at 1 dB compression
- High active directivity, 17 dB typ.
- Good IP3, 35 dBm typ.
- Reverse voltage connection protected
- Protected by US patent 6,790,049

Applications

- Low noise amplifier RF front end
- Low noise pre-amp
- Buffer amplifier
- WiMAX
- SAB / SAP
- Lab
- Test equipment



CASE STYLE: GA955

Connectors	Model	Price	Qty.
SMA	ZX60-3800LN-S+	\$119.95 ea.	(1-9)

+ RoHS compliant in accordance with EU Directive (2002/95/EC)

The +Suffix has been added in order to identify RoHS Compliance. See our web site for RoHS Compliance methodologies and qualifications.

Electrical Specifications at T_{AMB} = 25°C

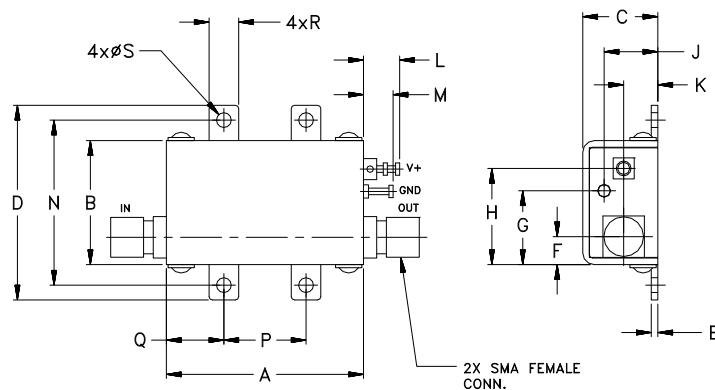
MODEL NO.	FREQ. (MHz)	GAIN (dB)				MAXIMUM POWER (dBm) Output (1 dB Comp.)	DYNAMIC RANGE			VSWR (:1) Typ.		ACTIVE DIRECTIVITY (dB) Isolation-Gain	DC VOLTAGE @ Pin V+ (V)	DC OPERATING CURRENT @ Pin V+ (mA)	
		Typ.	Min.	Flatness			NF (dB)	IP3 (dBm)	In	Out	Typ.			Typ.	Max.
				Typ.	Max.										
ZX60-3800LN+	3300-3600	24	20	±0.1	±0.4	18.0	0.9	2.0	36	1.5	1.3	17	5	85	110
	3600-3800	23	19	±0.6	±1.0	18.0	1.0	2.0	35	1.2	1.4	17	5	85	110

Maximum Ratings

Operating Temperature	-40°C to 80°C case
Storage Temperature	-55°C to 100°C
DC Voltage	6.5V
Input Power(no Damage)	1dBm

Permanent damage may occur if any of these limits are exceeded.

Outline Drawing



Outline Dimensions (inch/mm)

A	B	C	D	E	F	G	H	J	K	L	M	N	P	Q	R	S	wt.
1.20	.75	.46	1.18	.04	.17	.45	.59	.33	.21	.22	.18	1.00	.50	.35	.18	.106	grams
30.48	19.05	11.68	29.97	1.02	4.32	11.43	14.99	8.38	5.33	5.59	4.57	25.40	12.70	8.89	4.57	2.69	35.0

Mini-Circuits®
 ISO 9001 ISO 14001 AS 9100 CERTIFIED
 The Design Engineers Search Engine
 I/F/RF MICROWAVE COMPONENTS

For detailed performance specs & shopping online see web site

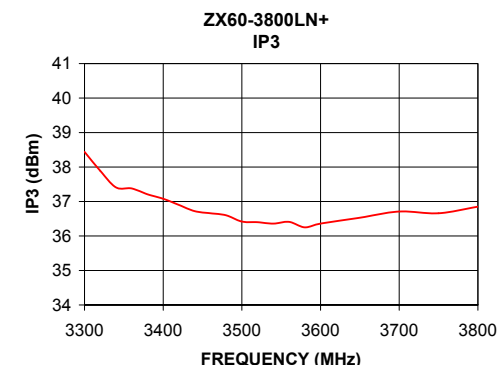
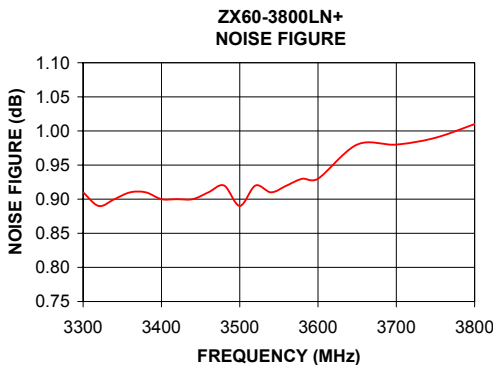
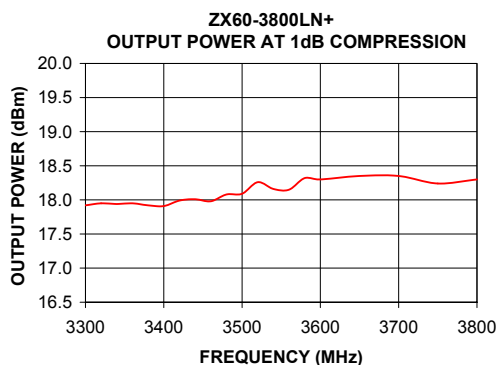
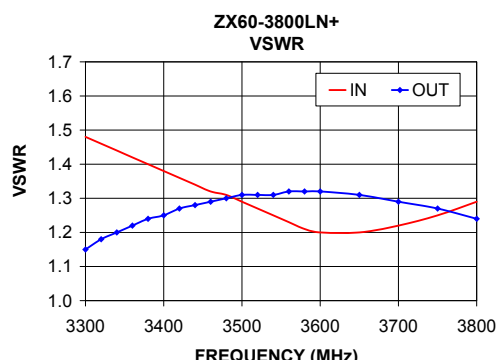
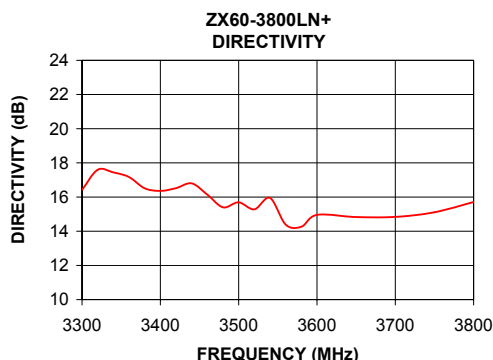
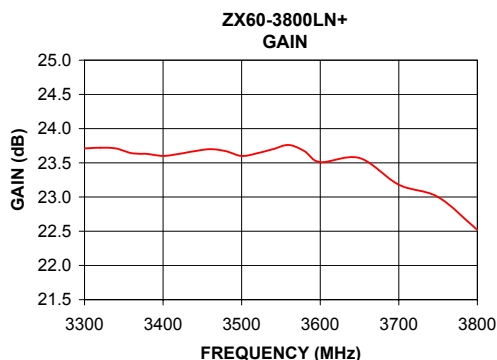
P.O. Box 350166, Brooklyn, New York 11235-0003 (718) 934-4500 Fax (718) 332-4661 The Design Engineers Search Engine Provides ACTUAL Data Instantly at minicircuits.com

Notes: 1. Performance and quality attributes and conditions not expressly stated in this specification sheet are intended to be excluded and do not form a part of this specification sheet. 2. Electrical specifications and performance data contained herein are based on Mini-Circuit's applicable established test performance criteria and measurement instructions. 3. The parts covered by this specification sheet are subject to Mini-Circuits standard limited warranty and terms and conditions (collectively, "Standard Terms"); Purchasers of this part are entitled to the rights and benefits contained therein. For a full statement of the Standard Terms and the exclusive rights and remedies thereunder, please visit Mini-Circuits' website at www.minicircuits.com/MCLStore/terms.jsp.

REV. OR
 M111161
 RDF-1363
 ZX60-3800LN+
 BLUEC/RAV
 090910
 Page 1 of 2

Typical Performance Data & Curves at 25°C ZX60-3800LN+

FREQUENCY (MHz)	GAIN (dB)	DIRECTIVITY (dB)	VSWR IN (:1)	VSWR OUT (:1)	POWER OUT @ 1dB COMPRESSION (dBm)	IP3 (dBm)	NF (dB)
3300	23.71	16.42	1.48	1.15	17.92	38.44	0.91
3320	23.72	17.60	1.46	1.18	17.95	37.89	0.89
3340	23.71	17.44	1.44	1.20	17.94	37.41	0.90
3360	23.64	17.17	1.42	1.22	17.95	37.38	0.91
3380	23.63	16.51	1.40	1.24	17.92	37.21	0.91
3400	23.60	16.36	1.38	1.25	17.91	37.08	0.90
3420	23.63	16.52	1.36	1.27	17.99	36.90	0.90
3440	23.67	16.80	1.34	1.28	18.01	36.72	0.90
3460	23.70	16.14	1.32	1.29	17.98	36.66	0.91
3480	23.67	15.40	1.31	1.30	18.08	36.60	0.92
3500	23.60	15.69	1.29	1.31	18.09	36.42	0.89
3520	23.64	15.28	1.27	1.31	18.26	36.40	0.92
3540	23.70	15.95	1.25	1.31	18.16	36.36	0.91
3560	23.76	14.39	1.23	1.32	18.15	36.41	0.92
3580	23.67	14.26	1.21	1.32	18.32	36.25	0.93
3600	23.51	14.96	1.20	1.32	18.30	36.36	0.93
3650	23.57	14.83	1.20	1.31	18.35	36.53	0.98
3700	23.18	14.84	1.22	1.29	18.35	36.71	0.98
3750	23.00	15.11	1.25	1.27	18.24	36.66	0.99
3800	22.52	15.71	1.29	1.24	18.30	36.85	1.01



For detailed performance specs & shopping online see web site

P.O. Box 350166, Brooklyn, New York 11235-0003 (718) 934-4500 Fax (718) 332-4661 The Design Engineers Search Engine Provides ACTUAL Data Instantly at minicircuits.com

Notes: 1. Performance and quality attributes and conditions not expressly stated in this specification sheet are intended to be excluded and do not form a part of this specification sheet. 2. Electrical specifications and performance data contained herein are based on Mini-Circuit's applicable established test performance criteria and measurement instructions. 3. The parts covered by this specification sheet are subject to Mini-Circuits standard limited warranty and terms and conditions (collectively, "Standard Terms"); Purchasers of this part are entitled to the rights and benefits contained therein. For a full statement of the Standard Terms and the exclusive rights and remedies thereunder, please visit Mini-Circuits' website at www.minicircuits.com/MCLStore/terms.jsp.