

Coaxial Power Splitter/Combiner

ZX10-4-24+ ZX10-4-24

4 Way-0° 50Ω 1675 to 2350 MHz



Maximum Ratings

Operating Temperature	-40°C to 85°C
Storage Temperature	-55°C to 100°C
Power Input (as a splitter)	2.5W max.*
Power Input (as a combiner)	0.125W max.

*maximum VSWR at output 1.2:1
Permanent damage may occur if any of these limits are exceeded.

Coaxial Connections

SUM PORT	S
PORT 1	1
PORT 2	2
PORT 3	3
PORT 4	4

Features

- low insertion loss, 0.9 dB typ.
- high isolation, 20 dB typ.
- rigid unibody construction
- gold plated connectors; nickel plated body
- low cost
- small size
- protected by US patent 6,790,049

Applications

- PCS/DCS
- antenna arrays
- signal distribution
- test bench

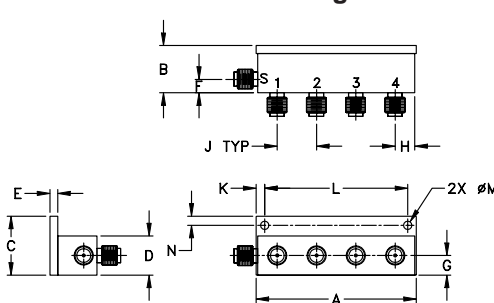
Electrical Specifications (T_{AMB}=25°C)

FREQ. RANGE (MHz)	ISOLATION (dB)		INSERTION LOSS (dB) ABOVE 6 dB		PHASE UNBALANCE (Deg.)	AMPLITUDE UNBALANCE (dB)	INPUT VSWR (:1)	OUTPUT VSWR (:1)
	Typ.	Min.	Typ.	Max.				
f _L -f _U					Max.	Max.	Typ.	Typ.
1675-2350	20	17	0.9	1.1	5.0	0.7	1.18	1.3
1775-2200	25	20	0.9	1.1	5.0	0.7	1.18	1.3

Typical Performance Data

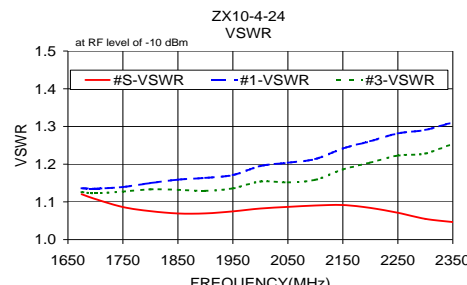
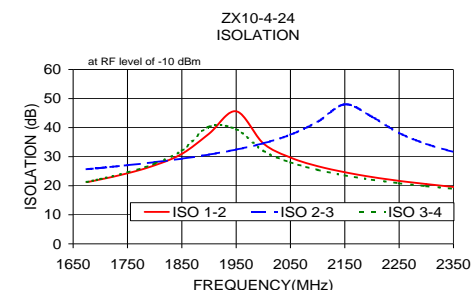
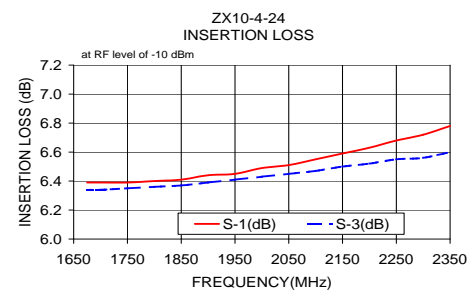
Freq. (MHz)	Insertion Loss (dB)				Amp. Unbal. (dB)	Isolation (dB)			Phase Unbal. (deg.)	VSWR S	VSWR 1	VSWR 2	VSWR 3	VSWR 4
	S-1	S-2	S-3	S-4		1-2	2-3	3-4						
1675.00	6.39	6.69	6.34	6.28	0.41	21.22	25.68	21.32	0.58	1.12	1.14	1.19	1.13	1.18
1700.00	6.39	6.70	6.34	6.28	0.42	22.15	26.12	22.32	0.45	1.11	1.14	1.19	1.12	1.18
1750.00	6.39	6.71	6.35	6.28	0.44	24.28	27.06	24.59	0.43	1.09	1.14	1.20	1.13	1.18
1800.00	6.40	6.73	6.36	6.28	0.45	27.02	28.12	27.60	0.39	1.08	1.15	1.20	1.13	1.18
1850.00	6.41	6.74	6.37	6.27	0.47	30.96	29.32	32.08	0.63	1.07	1.16	1.20	1.13	1.18
1900.00	6.44	6.75	6.39	6.28	0.47	37.87	30.73	40.30	0.89	1.07	1.16	1.21	1.13	1.19
1950.00	6.45	6.76	6.41	6.27	0.48	45.62	32.44	39.41	1.17	1.07	1.17	1.22	1.14	1.20
2000.00	6.49	6.76	6.43	6.28	0.49	34.59	34.61	32.00	1.51	1.08	1.20	1.23	1.15	1.21
2050.00	6.51	6.77	6.45	6.28	0.49	29.72	37.55	28.05	1.82	1.09	1.20	1.24	1.15	1.22
2100.00	6.55	6.77	6.47	6.29	0.48	26.72	42.00	25.45	1.97	1.09	1.21	1.25	1.16	1.23
2150.00	6.59	6.76	6.50	6.29	0.47	24.64	48.00	23.57	2.21	1.09	1.24	1.26	1.19	1.24
2200.00	6.63	6.76	6.52	6.29	0.46	23.01	43.74	22.06	2.45	1.08	1.26	1.28	1.20	1.26
2250.00	6.68	6.74	6.55	6.30	0.44	21.68	38.14	20.85	2.76	1.07	1.28	1.28	1.22	1.27
2300.00	6.72	6.73	6.56	6.30	0.43	20.57	34.39	19.84	2.93	1.06	1.29	1.30	1.23	1.29
2350.00	6.78	6.72	6.60	6.30	0.48	19.56	31.63	18.93	2.96	1.05	1.31	1.31	1.25	1.30

Outline Drawing

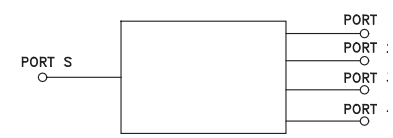


Outline Dimensions (inch/mm)

A	B	C	D	E	F	G	H
2.04	.60	.75	.50	.10	.17	.25	.25
51.82	15.24	19.05	12.70	2.54	4.32	6.35	6.35
J	K	L	M	N			wt
.50	.11	1.820	.106	.12			grams
12.70	2.79	46.23	2.69	3.05			60.0



electrical schematic



For detailed performance specs & shopping online see web site

P.O. Box 350166, Brooklyn, New York 11235-0003 (718) 934-4500 Fax (718) 332-4661 The Design Engineers Search Engine Provides ACTUAL Data Instantly at minicircuits.com

Notes: 1. Performance and quality attributes and conditions not expressly stated in this specification sheet are intended to be excluded and do not form a part of this specification sheet. 2. Electrical specifications and performance data contained herein are based on Mini-Circuit's applicable established test performance criteria and measurement instructions. 3. The parts covered by this specification sheet are subject to Mini-Circuits standard limited warranty and terms and conditions (collectively, "Standard Terms"); Purchasers of this part are entitled to the rights and benefits contained therein. For a full statement of the Standard Terms and the exclusive rights and remedies thereunder, please visit Mini-Circuits' website at www.minicircuits.com/MCLStore/terms.jsp.

REV. A
M98898
ZX10-4-24
ED-10988/5
AD/RC/CP
090827