

Coaxial Frequency Mixer

ZX05-C24LH+

Level 10 (LO Power +10 dBm) 300 to 2400 MHz



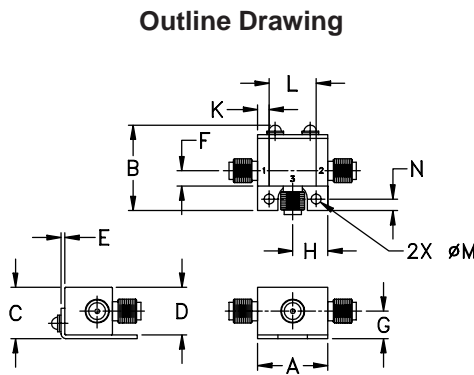
CASE STYLE: FL905

Maximum Ratings

Operating Temperature	-40°C to 85°C
Storage Temperature	-55°C to 100°C
RF Power	50mW
IF Current	40mA
Permanent damage may occur if any of these limits are exceeded.	

Coaxial Connections

LO	1
RF	2
IF	3



Outline Dimensions (inch/mm)

A	B	C	D	E	F	G
.74	.90	.54	.50	.04	.16	.29
18.80	22.86	13.72	12.70	1.02	4.06	7.37
H	J	K	L	M	N	wt
.37	--	.122	.496	.106	.122	grams
9.40	--	3.10	12.60	2.69	3.10	20.0

Features

- rugged construction
- small size
- low conversion loss
- high L-R isolation
- protected by US Patents 6,790,049 & 7,027,795

Applications

- cellular
- PCS
- instrumentation
- satellite communication

Electrical Specifications (T_{AMB}=25°C)

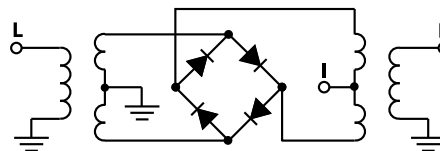
FREQUENCY (MHz)	CONVERSION LOSS (dB)	LO-RF ISOLATION (dB)		LO-IF ISOLATION (dB)		IP3 at center band (dBm)
		Typ.	Min.	Typ.	Min.	
300-2400	6.5	40	25	30	15	13

1 dB COMP: +5 dBm typ.
m= mid band [2f_L to f_L/2]

Typical Performance Data

Frequency (MHz)	Conversion Loss (dB)	Isolation L-R (dB)	Isolation L-I (dB)	VSWR RF Port (:1)	VSWR LO Port (:1)	
					LO +10dBm	LO +10dBm
300.10	330.11	5.70	53.04	2.14	15.23	
407.79	437.80	5.14	42.05	1.71	3.78	
515.49	545.50	6.04	39.80	2.99	1.99	
623.18	653.19	5.94	59.61	3.24	1.72	
730.87	760.88	5.61	41.90	2.83	2.22	
838.56	868.57	6.00	40.08	3.36	2.99	
1000.10	1030.11	6.03	41.25	3.20	3.07	
1107.79	1137.80	6.16	41.82	3.28	3.27	
1215.49	1245.50	6.05	42.41	3.01	3.72	
1323.18	1353.19	6.48	42.37	2.92	3.62	
1430.87	1460.88	5.53	41.58	2.07	2.81	
1538.56	1568.57	4.92	39.23	1.12	1.86	
1700.10	1730.11	5.02	34.19	1.14	1.84	
1807.79	1837.80	5.33	35.50	1.43	1.77	
1915.49	1945.50	5.45	33.18	1.53	2.14	
2023.18	2053.19	5.80	32.63	2.05	2.38	
2130.87	2160.88	6.86	33.32	2.74	2.41	
2346.25	2376.26	5.93	36.33	1.98	3.05	
2400.10	2370.09	6.03	34.46	1.98	3.47	

Electrical Schematic



Mini-Circuits
ISO 9001 ISO 14001 AS 9100 CERTIFIED

P.O. Box 350166, Brooklyn, New York 11235-0003 (718) 934-4500 Fax (718) 332-4661 The Design Engineers Search Engine Provides ACTUAL Data Instantly at minicircuits.com

For detailed performance specs & shopping online see web site

Notes: 1. Performance and quality attributes and conditions not expressly stated in this specification sheet are intended to be excluded and do not form a part of this specification sheet. 2. Electrical specifications and performance data contained herein are based on Mini-Circuit's applicable established test performance criteria and measurement instructions. 3. The parts covered by this specification sheet are subject to Mini-Circuits standard limited warranty and terms and conditions (collectively, "Standard Terms"); Purchasers of this part are entitled to the rights and benefits contained therein. For a full statement of the Standard Terms and the exclusive rights and remedies thereunder, please visit Mini-Circuits' website at www.minicircuits.com/MCLStore/terms.jsp.

