

Frequency Mixer WIDE BAND

ZX05-762H+

Level 17 (LO Power +17 dBm) 2300 to 7600 MHz



CASE STYLE: FL905

Connectors	Model	Price	Qty.
SMA	ZX05-762H-S+	\$47.95	(1-24)

+ RoHS compliant in accordance with EU Directive (2002/95/EC)

The +Suffix has been added in order to identify RoHS Compliance. See our web site for RoHS Compliance methodologies and qualifications.

Maximum Ratings

Operating Temperature	-40°C to 85°C
Storage Temperature	-55°C to 100°C
RF Power	200mW

Permanent damage may occur if any of these limits are exceeded.

Coaxial Connections

LO	2
RF	3
IF	1

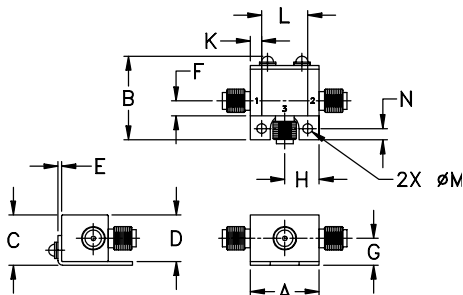
Features

- wide bandwidth, 2300 to 7600 MHz
- low conversion loss, 6.0 dB typ.
- excellent IF BW, DC to 3000 MHz
- rugged construction
- small size
- useable as up and down converter
- protected by US patents, 6,790,049 and 7,027,795

Applications

- satellite up and down converters
- defense radar and communications
- line of sight links
- WIFI
- blue tooth
- VSAT
- ISM

Outline Drawing



Outline Dimensions (inch/mm)

A	B	C	D	E	F	G
.74	.90	.54	.50	.04	.16	.29
18.80	22.86	13.72	12.70	1.02	4.06	7.37
H	J	K	L	M	N	wt
.37	--	.122	.496	.106	.122	grams
9.40	--	3.10	12.60	2.69	3.10	20.0

Electrical Specifications

FREQUENCY (MHz)	CONVERSION LOSS* (dB)	LO-RF ISOLATION (dB)		LO-IF ISOLATION (dB)		IP3 (dBm)
		Typ.	Min.	Typ.	Min.	
<i>LO/RF</i> <i>I_L-I_U</i>	<i>IF</i>	<i>Typ.</i>	<i>σ</i>	<i>Max.</i>		
2300-7600	DC-3000					
2300-3200		6.0	0.1	8.5	35	29
3200-3700		6.2	0.1	7.6	31	28
3700-4200		6.1	0.2	7.0	32	27
4200-7600		5.0	0.2	8.5	23	16
					21	14
					27	21
					32	23
					18	11
						25
						24
						25
						23

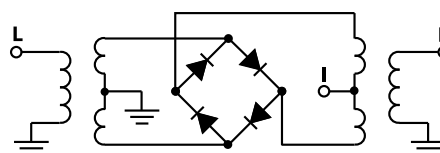
1 dB COMPR.: +14 dBm typ.

* Conversion loss at 30 MHz IF; σ is a measure of repeatability from unit to unit.

Typical Performance Data

Frequency (MHz)	Conversion Loss (dB)	Isolation L-R (dB)	Isolation L-I (dB)	VSWR RF Port (:1)	VSWR LO Port (:1)	
					LO +17dBm	LO +17dBm
<i>RF</i>	<i>LO</i>	<i>LO +17dBm</i>	<i>LO +17dBm</i>	<i>LO +17dBm</i>	<i>LO +17dBm</i>	<i>LO +17dBm</i>
2300.10	2330.10	7.47	34.31	17.54	2.68	3.91
2600.10	2630.10	6.82	39.47	20.43	2.94	1.97
2900.10	2930.10	6.75	33.58	21.67	3.11	1.78
3200.10	3230.10	6.49	32.46	24.54	3.09	1.88
3500.10	3530.10	6.21	33.56	26.87	2.52	2.22
3700.10	3730.10	5.85	33.07	28.77	2.25	1.96
3800.10	3830.10	5.89	33.22	30.06	2.16	1.90
4100.10	4130.10	5.81	33.12	33.91	2.19	1.79
4200.10	4230.10	5.94	31.59	31.99	2.46	1.80
4500.10	4530.10	5.72	28.85	21.16	2.33	1.98
4800.10	4830.10	6.45	28.63	15.74	2.53	2.27
5100.10	5130.10	7.13	27.21	15.07	3.07	2.65
5400.10	5430.10	6.72	25.69	16.29	3.12	3.07
5700.10	5730.10	6.55	24.48	18.39	2.88	3.12
6100.10	6130.10	6.25	22.49	22.26	2.58	2.33
6400.10	6430.10	6.24	21.83	25.20	2.54	1.59
6700.10	6730.10	6.18	21.23	25.55	2.25	1.08
7000.10	7030.10	6.16	19.80	27.90	2.10	1.52
7300.10	7330.10	6.10	19.89	22.56	1.80	2.51
7600.10	7630.10	7.48	19.04	17.79	2.57	3.90

Electrical Schematic



Mini-Circuits
ISO 9001 ISO 14001 AS 9100 CERTIFIED

P.O. Box 350166, Brooklyn, New York 11235-0003 (718) 934-4500 Fax (718) 332-4661 The Design Engineers Search Engine Provides ACTUAL Data Instantly at minicircuits.com

IF/RF MICROWAVE COMPONENTS

For detailed performance specs & shopping online see web site

Notes: 1. Performance and quality attributes and conditions not expressly stated in this specification sheet are intended to be excluded and do not form a part of this specification sheet. 2. Electrical specifications and performance data contained herein are based on Mini-Circuit's applicable established test performance criteria and measurement instructions. 3. The parts covered by this specification sheet are subject to Mini-Circuits standard limited warranty and terms and conditions (collectively, "Standard Terms"); Purchasers of this part are entitled to the rights and benefits contained therein. For a full statement of the Standard Terms and the exclusive rights and remedies thereunder, please visit Mini-Circuits' website at www.minicircuits.com/MCLStore/terms.jsp.

REV. OR
M111660
ZX05-762H+
ED-12902/15
DJ/TD/QL/AM
091007
Page 1 of 2

