

Coaxial Amplifier

ZVE-8G+

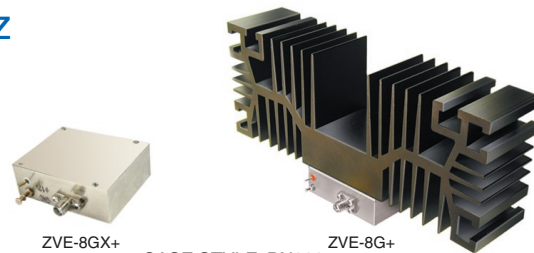
50Ω Medium High Power 2000 to 8000 MHz

Features

- wideband, 2 to 8 GHz
- low noise, 4 dB typ.
- high IP3, +40 dBm typ.
- high dynamic range
- high gain, 30 dB min
- laser sealed case

Applications

- satellite communications
- line-of-sight transmitters
- signal generators
- spread-spectrum communication



Connectors	Model	Price	Qty.
SMA	ZVE-8G+	\$1095.00 ea.	(1-9)
SMA	ZVE-8GX+	\$1020.00 ea.	(1-9)

CASE STYLE: BN333

+ RoHS compliant in accordance with EU Directive (2002/95/EC)

The +Suffix has been added in order to identify RoHS Compliance. See our web site for RoHS Compliance methodologies and qualifications.

Electrical Specifications

MODEL NO.	FREQUENCY (MHz)		GAIN (dB)		MAXIMUM POWER (dBm)		DYNAMIC RANGE		VSWR (:1) Max.		DC POWER	
	f _L	f _U	Min.	Flatness Max.	Output (1 dB Compr. Min.)	Input (no damage)	NF (dB) Typ.	IP3 (dBm) Typ.	In	Out	Volt (V) Nom.	Current (A) Max.
ZVE-8G+	2000	8000	30	±2.0	+30**	+20	4	+40	2.0	2.0	12	1.2
ZVE-8GX+*	2000	8000	30	±2.0	+30**	+20	4	+40	2.0	2.0	12	1.2

* Heat sink not included

** At 25°C; +30 dBm typ. at 54°C ambient.

Open load is not recommended, potentially can cause damage. With no load derate max input power by 20 dB

To order without heat sink, add suffix X to model number. Alternative heat sinking and heat removal must be provided by the user to limit maximum base-plate temperature to 85°C, in order to ensure proper performance. For reference, this requires thermal resistance of user's external heat sink to be 1.3°C/W Max.

Maximum Ratings

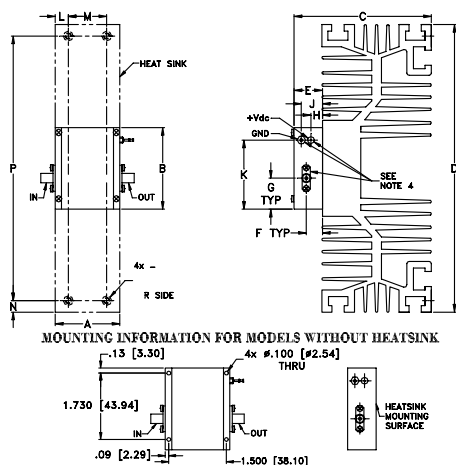
Operating Temperature -55°C to 54°C

Storage Temperature -65°C to 150°C

DC Voltage +18V Max.

Permanent damage may occur if any of these limits are exceeded.

Outline Drawing



Outline Dimensions (inch/mm)

A	B	C	D	E	F	G	H	J	K	L	M	N	P	wt
1.680	2.130	3.6	7.5	.74	.42	.81	.30	.55	1.80	.34	1.000	.30	6.900	grams*
42.67	54.10	91.44	190.50	18.80	10.67	20.57	7.62	13.97	45.72	8.64	25.40	7.62	175.26	700

*100 grams without heatsink

Mini-Circuits®
ISO 9001 ISO 14001 AS 9100 CERTIFIED

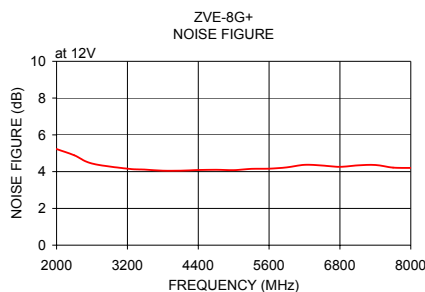
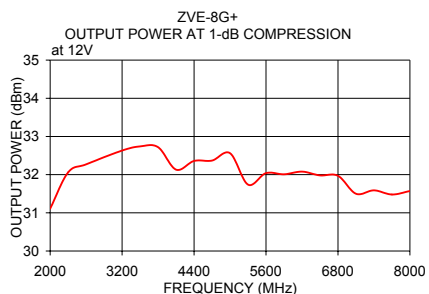
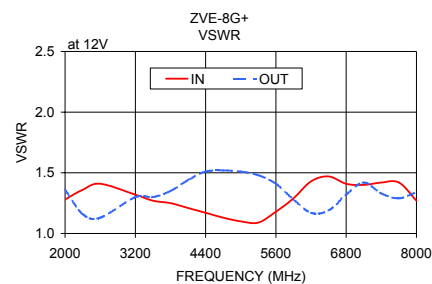
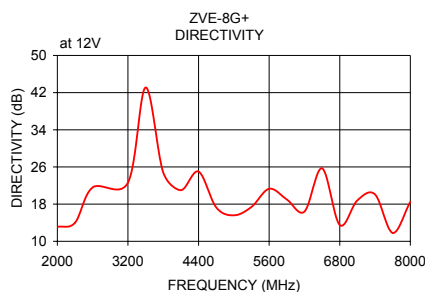
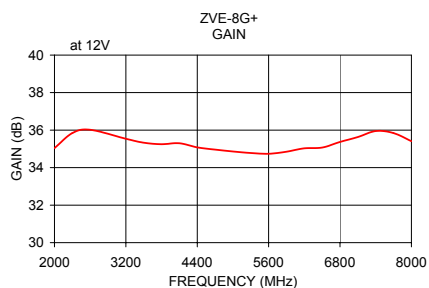
For detailed performance specs & shopping online see web site

P.O. Box 350166, Brooklyn, New York 11235-0003 (718) 934-4500 Fax (718) 332-4661 The Design Engineers Search Engine Provides ACTUAL Data Instantly at minicircuits.com

IF/RF MICROWAVE COMPONENTS

Notes: 1. Performance and quality attributes and conditions not expressly stated in this specification sheet are intended to be excluded and do not form a part of this specification sheet. 2. Electrical specifications and performance data contained herein are based on Mini-Circuit's applicable established test performance criteria and measurement instructions. 3. The parts covered by this specification sheet are subject to Mini-Circuits standard limited warranty and terms and conditions (collectively, "Standard Terms"); Purchasers of this part are entitled to the rights and benefits contained therein. For a full statement of the Standard Terms and the exclusive rights and remedies thereunder, please visit Mini-Circuits' website at www.minicircuits.com/MCLStore/terms.jsp.

FREQUENCY (MHz)	GAIN (dB)	DIRECTIVITY (dB)	VSWR (:1)		NOISE FIGURE (dB)	POUT at 1 dB COMPR. (dBm)
	12V	12V	IN	OUT	12V	12V
2000.00	35.04	13.10	1.28	1.36	5.23	31.11
2300.00	35.84	14.00	1.36	1.16	4.89	32.06
2600.00	36.02	21.60	1.41	1.13	4.44	32.27
3200.00	35.54	22.60	1.32	1.30	4.16	32.63
3500.00	35.33	43.10	1.27	1.30	4.11	32.74
3800.00	35.25	24.80	1.25	1.35	4.05	32.72
4100.00	35.30	21.00	1.21	1.44	4.05	32.13
4400.00	35.08	25.00	1.17	1.51	4.09	32.36
4700.00	34.96	17.30	1.13	1.52	4.10	32.37
5000.00	34.86	15.60	1.10	1.51	4.08	32.56
5300.00	34.78	17.40	1.09	1.48	4.15	31.74
5600.00	34.74	21.30	1.18	1.41	4.16	32.04
5900.00	34.85	19.00	1.29	1.28	4.23	32.01
6200.00	35.03	16.40	1.43	1.17	4.37	32.08
6500.00	35.07	25.70	1.47	1.19	4.33	31.98
6800.00	35.37	13.50	1.41	1.32	4.26	31.97
7100.00	35.63	18.80	1.40	1.42	4.34	31.50
7400.00	35.95	20.10	1.42	1.33	4.36	31.59
7700.00	35.84	11.80	1.42	1.29	4.22	31.48
8000.00	35.41	18.50	1.27	1.34	4.20	31.57



For detailed performance specs & shopping online see web site

P.O. Box 350166, Brooklyn, New York 11235-0003 (718) 934-4500 Fax (718) 332-4661 The Design Engineers Search Engine Provides ACTUAL Data Instantly at minicircuits.com

IF/RF MICROWAVE COMPONENTS

Notes: 1. Performance and quality attributes and conditions not expressly stated in this specification sheet are intended to be excluded and do not form a part of this specification sheet. 2. Electrical specifications and performance data contained herein are based on Mini-Circuit's applicable established test performance criteria and measurement instructions. 3. The parts covered by this specification sheet are subject to Mini-Circuits standard limited warranty and terms and conditions (collectively, "Standard Terms"); Purchasers of this part are entitled to the rights and benefits contained therein. For a full statement of the Standard Terms and the exclusive rights and remedies thereunder, please visit Mini-Circuits' website at www.minicircuits.com/MCLStore/terms.jsp.