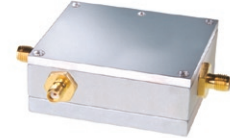


Coaxial Directional Coupler

50Ω 20dB 800 to 2000 MHz

ZNDC-20-2G+



CASE STYLE: FM587

Connectors	Model	Price	Qty.
SMA	ZNDC-20-2G-S+	\$49.95	(1-9)

+ RoHS compliant in accordance with EU Directive (2002/95/EC)

The +Suffix has been added in order to identify RoHS Compliance. See our web site for RoHS Compliance methodologies and qualifications.

Maximum Ratings

Operating Temperature	-55°C to 100°C
Storage Temperature	-55°C to 100°C
Power input	3W Max.

Coaxial Connections

INPUT	1
OUTPUT	2
COUPLED	3

Features

- excellent mainline loss, 0.5 dB typ.
- excellent VSWR, 1.15:1 typ.
- very flat coupling ± 0.2 dB typ.

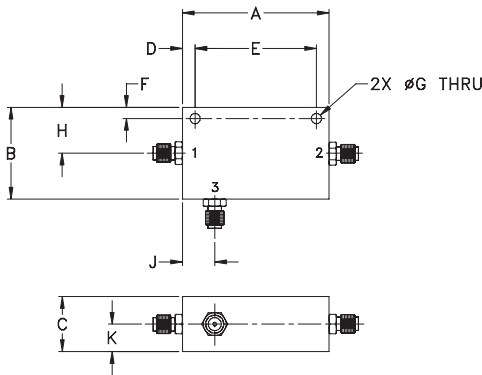
Applications

- cellular
- PCS
- ISM

Directional Coupler Electrical Specifications

FREQ. RANGE (MHz)	COUPLING (dB)		MAINLINE LOSS (dB)		DIRECTIVITY (dB)		VSWR (:1)	POWER INPUT (W)
	Nom.	Max. Flatness	Typ.	Max.	Typ.	Min.		
800-2000								
800-1000	20.0 \pm 0.5	\pm 0.3	0.35	0.6	25	17	1.15	3
1000-1700	19.8 \pm 0.5	\pm 0.4	0.5	0.9	25	18	1.15	3
1700-2000	19.8 \pm 0.5	\pm 0.5	0.6	1.1	20	14	1.15	3

Outline Drawing

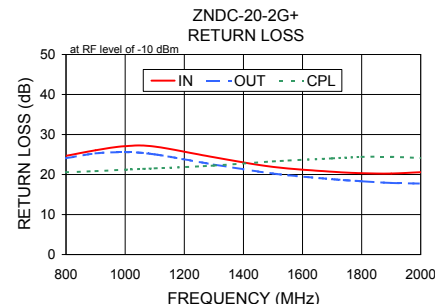
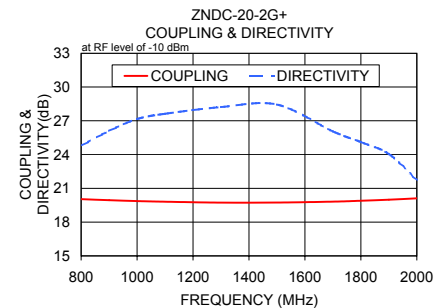
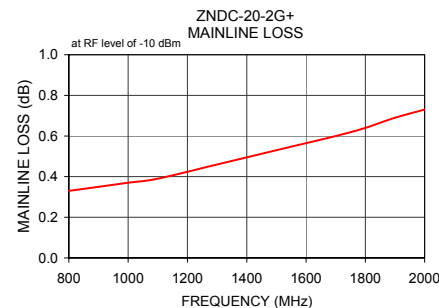


Outline Dimensions (inch/mm)

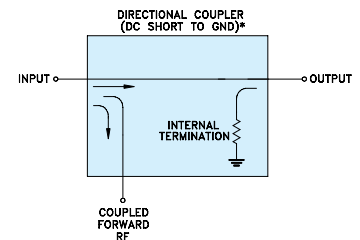
A	B	C	D	E	F	
2.00	1.25	0.75	0.17	1.656	0.15	
50.80	31.75	19.05	4.32	42.06	3.81	
G	H	J	K			wt
0.14	0.63	0.44	0.38			grams
3.56	16.00	11.18	9.65			57.0

Typical Performance Data

Frequency (MHz)	Mainline Loss (dB) In-Out	Coupling (dB) In-Cpl	Directivity (dB)	Return Loss (dB)		
				In	Out	Cpl
800.00	0.33	20.04	24.78	24.68	24.07	20.57
900.00	0.35	19.95	26.10	26.07	25.28	20.84
1000.00	0.37	19.87	27.15	27.09	25.57	21.21
1100.00	0.39	19.81	27.62	26.98	25.04	21.54
1300.00	0.46	19.73	28.22	24.33	22.51	22.23
1500.00	0.53	19.74	28.44	21.90	20.25	23.28
1700.00	0.60	19.82	26.05	20.70	18.83	24.03
1800.00	0.64	19.90	25.11	20.34	18.32	24.40
1900.00	0.69	19.99	24.05	20.25	17.90	24.43
2000.00	0.73	20.11	21.74	20.57	17.76	24.12



Electrical Schematic



* ELECTRICAL SCHEMATIC IS FOR DIRECTIONAL COUPLER WITH INTERNAL TRANSFORMER(S) THAT ROUTES DC FROM RF PORTS TO GROUND.

Mini-Circuits®
ISO 9001 ISO 14001 AS 9100 CERTIFIED

minicircuits.com

P.O. Box 350166, Brooklyn, New York 11235-0003 (718) 934-4500 Fax (718) 332-4661 For detailed performance specs & shopping online see Mini-Circuits web site



The Design Engineers Search Engine Provides ACTUAL Data Instantly From MINI-CIRCUITS At: www.minicircuits.com

IF/RF MICROWAVE COMPONENTS

REV. C
M120055
ED-6521/3
ZNDC-20-2G+
W2/TD/CP/AM
090127