

# Coaxial Frequency Mixer

Level 23 (LO Power +23 dBm) 5 to 500 MHz

## ZMY-1+ ZMY-1



### Maximum Ratings

Operating Temperature	-55°C to 100°C
Storage Temperature	-55°C to 100°C
RF Power	350mW
IF Current	40mA
Permanent damage may occur if any of these limits are exceeded.	

### Coaxial Connections

LO	1
RF	3
IF	2

### Features

- low conversion loss, 6.62 dB typ.
- high isolation, 40 dB typ. L-R & L-I
- wideband, 5 to 500 MHz

### Applications

- VHF/UHF
- instrumentation

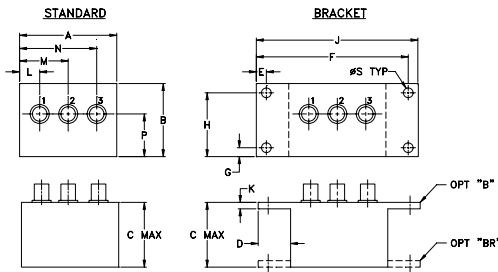
CASE STYLE: M21

Connectors	Model	Price	Qty.
SMA	ZMY-1(+)	\$67.95	(1-9)
<b>BRACKET (OPTION "B")</b>			
		\$5.00	(1+)
<b>BRACKET (OPTION "BR")</b>			
		\$1.50	(1+)

**+ RoHS compliant in accordance with EU Directive (2002/95/EC)**

The +Suffix identifies RoHS Compliance. See our web site for RoHS Compliance methodologies and qualifications.

### Outline Drawing



### Outline Dimensions (inch)

A	B	C	D	E	F	G	H
1.50	1.13	1.00	.50	.155	2.345	.138	.987
38.10	28.70	25.40	12.70	3.94	59.56	3.51	25.07
J	K	L	M	N	P	S	wt
2.50	.10	.31	.75	1.19	.66	.150	grams
63.50	2.54	7.87	19.05	30.23	16.76	3.81	40.0

### Electrical Specifications

FREQUENCY (MHz)	CONVERSION LOSS (dB)	LO-RF ISOLATION (dB)			LO-IF ISOLATION (dB)											
		L	M	U	L	M	U									
5-500	DC-500	6.62	0.10	7.5	8.5	55	45	40	30	25	55	45	40	30	30	20

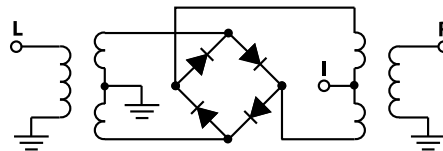
1 dB COMP.: +15 dBm typ.

L = low range [ $f_L$  to  $10 f_L$ ] M = mid range [ $10 f_L$  to  $f_U/2$ ] U = upper range [ $f_U/2$  to  $f_U$ ]  
m = mid band [ $2f_L$  to  $f_U/2$ ]

### Typical Performance Data

Frequency (MHz)		Conversion Loss (dB)	Isolation L-R (dB)	Isolation L-I (dB)	VSWR RF Port (:1)	VSWR LO Port (:1)
RF	LO	LO +23dBm	LO +23dBm	LO +23dBm	LO +23dBm	LO +23dBm
5.00	35.00	6.52	57.02	82.02	1.29	2.50
10.00	40.00	6.40	56.72	82.32	1.14	2.37
20.00	50.00	6.40	54.48	81.28	1.06	2.33
35.94	65.94	6.43	51.51	75.99	1.05	2.31
50.00	80.00	6.40	48.82	72.57	1.07	2.37
82.35	52.35	6.39	45.62	62.91	1.08	2.20
100.00	70.00	6.36	44.05	58.66	1.10	2.25
144.22	114.22	6.53	41.60	53.71	1.12	2.11
175.16	145.16	6.68	40.04	51.38	1.14	2.25
200.00	170.00	6.69	39.45	50.73	1.16	2.06
221.57	191.57	6.52	36.41	46.45	1.18	2.17
252.50	222.50	6.52	36.33	47.23	1.20	2.04
283.44	253.44	6.64	36.36	47.98	1.22	2.10
314.38	284.38	6.74	36.35	46.73	1.24	1.96
345.32	315.32	6.62	33.85	44.99	1.26	2.04
376.26	346.26	6.50	30.50	41.75	1.29	1.96
407.19	377.19	6.43	32.89	42.28	1.31	1.95
438.13	408.13	6.50	33.81	42.66	1.35	1.90
469.07	439.07	6.81	33.63	41.41	1.38	1.87
500.00	470.00	6.62	34.24	40.42	1.44	1.83

### Electrical Schematic



**Mini-Circuits**  
ISO 9001 ISO 14001 AS 9100 CERTIFIED

For detailed performance specs & shopping online see web site

P.O. Box 350166, Brooklyn, New York 11235-0003 (718) 934-4500 Fax (718) 332-4661 The Design Engineers Search Engine Provides ACTUAL Data Instantly at [minicircuits.com](http://minicircuits.com)

IF/RF MICROWAVE COMPONENTS

Notes: 1. Performance and quality attributes and conditions not expressly stated in this specification sheet are intended to be excluded and do not form a part of this specification sheet. 2. Electrical specifications and performance data contained herein are based on Mini-Circuit's applicable established test performance criteria and measurement instructions. 3. The parts covered by this specification sheet are subject to Mini-Circuit's standard limited warranty and terms and conditions (collectively, "Standard Terms"); Purchasers of this part are entitled to the rights and benefits contained therein. For a full statement of the Standard Terms and the exclusive rights and remedies thereunder, please visit Mini-Circuit's website at [www.minicircuits.com/MCLStore/terms.jsp](http://www.minicircuits.com/MCLStore/terms.jsp).

REV. A  
M124192  
ZMY-1  
DJ/TD/CP/AM  
090821  
Page 1 of 2

