

Coaxial Frequency Mixer

ZMX-8GLH

Level 10 (LO Power +10 dBm) 3700 to 8000 MHz

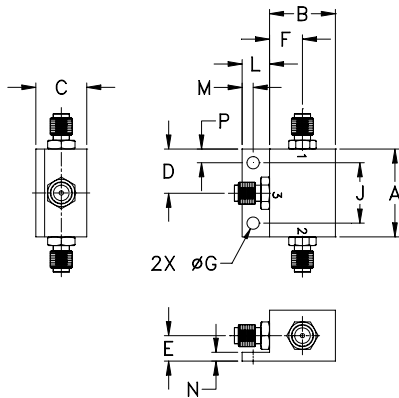
Maximum Ratings

Operating Temperature	-55°C to 100°C
Storage Temperature	-55°C to 100°C
RF Power	50mW
IF Current	40mA

Coaxial Connections

LO	1
RF	2
IF	3

Outline Drawing



Outline Dimensions (inch/mm)

A	B	C	D	E	F	G	H	
1.00	.75	.58	.50	.29	.38	.140	--	
25.40	19.05	14.73	12.70	7.37	9.65	3.56	--	
J	K	L	M	N	P		wt	
.687	--	.32	.13	.10	.16		grams	25.0
17.45	--	8.13	3.30	2.54	4.06			

Features

- wide frequency range, 3700 to 8000 MHz
- low conversion loss, 5.5 dB typ.
- high L-R isolation, 40 dB typ.

Applications

- SATCOM
- instrumentation
- defense & federal communications
- SHF



CASE STYLE: BU413

Connectors	Model	Price	Qty.
SMA	ZMX-8GLH	\$74.95 ea.	(1-9)

Electrical Specifications

FREQUENCY (MHz)	CONVERSION LOSS* (dB)	LO-RF ISOLATION (dB)		LO-IF ISOLATION (dB)	
		Typ.	Min.	Typ.	Min.
3700-8000	DC-2000	40	20	18	8

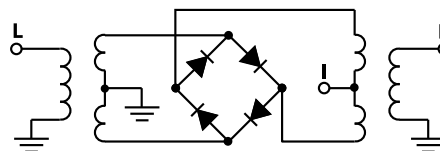
1 dB COMP.: +5 dBm typ.

* Above 750 MHz IF, conversion loss increases up to 9.8 dB max.

Typical Performance Data

Frequency (MHz)	Conversion Loss (dB)	Isolation L-R (dB)	Isolation L-I (dB)	VSWR RF Port (:1)	VSWR LO Port (:1)				
						LO +10dBm	LO +10dBm	LO +10dBm	LO +10dBm
						RF	LO	LO	LO
3700.00	3730.00	5.07	34.59	10.57	5.02	1.98			
3918.64	3948.64	5.14	34.05	11.06	5.42	1.90			
4000.00	4030.00	5.12	34.96	11.46	5.47	2.04			
4283.05	4313.05	5.15	40.84	12.40	5.55	2.28			
4574.58	4604.58	4.92	41.61	13.36	6.15	2.32			
4866.10	4896.10	4.80	37.25	14.74	5.69	2.46			
5000.00	4970.00	4.54	39.42	15.24	5.09	2.46			
5303.39	5273.39	4.35	44.52	16.07	3.30	2.51			
5594.92	5564.92	4.53	45.25	16.55	2.15	2.32			
5886.44	5856.44	5.22	47.16	17.07	1.77	2.56			
6000.00	5970.00	5.01	40.82	17.08	1.74	2.61			
6323.73	6293.73	4.46	37.37	17.40	1.73	2.28			
6615.25	6585.25	4.28	34.74	17.53	1.64	1.87			
6906.78	6876.78	4.30	34.56	17.94	1.59	1.81			
7000.00	6970.00	4.29	34.69	18.21	1.55	2.13			
7271.19	7241.19	4.28	32.95	18.54	1.40	1.76			
7562.71	7532.71	4.48	30.79	18.69	1.25	1.27			
7854.24	7824.24	4.94	31.13	19.25	1.13	1.29			
7927.12	7897.12	5.07	31.80	19.44	1.10	1.27			
8000.00	7970.00	5.20	32.79	19.74	1.08	1.28			

Electrical Schematic



Mini-Circuits
ISO 9001 ISO 14001 AS 9100 CERTIFIED

P.O. Box 350166, Brooklyn, New York 11235-0003 (718) 934-4500 Fax (718) 332-4661 The Design Engineers Search Engine Provides ACTUAL Data Instantly at minicircuits.com

For detailed performance specs & shopping online see web site

Notes: 1. Performance and quality attributes and conditions not expressly stated in this specification sheet are intended to be excluded and do not form a part of this specification sheet. 2. Electrical specifications and performance data contained herein are based on Mini-Circuits' applicable established test performance criteria and measurement instructions. 3. The parts covered by this specification sheet are subject to Mini-Circuits standard limited warranty and terms and conditions (collectively, "Standard Terms"); Purchasers of this part are entitled to the rights and benefits contained therein. For a full statement of the Standard Terms and the exclusive rights and remedies thereunder, please visit Mini-Circuits' website at www.minicircuits.com/MCLStore/terms.jsp.

REV. C
M93711
ZMX-8GLH
DJ/TD/CP/AM
081106
Page 1 of 2

