

Coaxial Frequency Mixer

ZMX-7GR

Level 7 (LO Power +7 dBm) 3700 to 7000 MHz

Maximum Ratings

Operating Temperature	-55°C to 100°C
Storage Temperature	-55°C to 100°C
RF Power	50mW
IF Current	40mA

Permanent damage may occur if any of these limits are exceeded.

Coaxial Connections

LO	2
RF	1
IF	3

Features

- wide frequency range, 3700 to 7000 MHz
- low conversion loss, 5.0 dB typ.
- high L-I isolation, 36 dB typ.

Applications

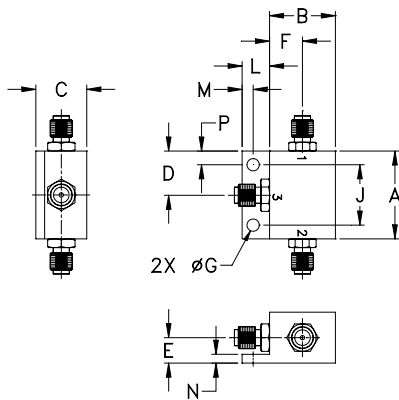
- SATCOM
- instrumentation
- defense & federal communications
- SHF



CASE STYLE: BU413

Connectors	Model	Price	Qty.
SMA	ZMX-7GR	\$71.95 ea.	(1-9)

Outline Drawing



Outline Dimensions (inch/mm)

A	B	C	D	E	F	G	H
1.00	.75	.58	.50	.29	.38	.140	--
25.40	19.05	14.73	12.70	7.37	9.65	3.56	--
J	K	L	M	N	P	wt	
.687	--	.32	.13	.10	.16	grams	
17.45	--	8.13	3.30	2.54	4.06	25.0	

Electrical Specifications

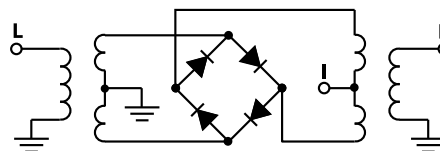
FREQUENCY (MHz)	CONVERSION LOSS (dB)	LO-RF ISOLATION (dB)		LO-IF ISOLATION (dB)	
		Typ.	Min.	Typ.	Min.
3700-7000	DC-1000	30	20	36	20

1 dB COMP.: +1 dBm typ.

Typical Performance Data

Frequency (MHz)	Conversion Loss (dB)	Isolation L-R (dB)	Isolation L-I (dB)	VSWR RF Port (:1)	VSWR LO Port (:1)
3700.00	3730.00	4.25	30.50	25.89	1.09
3949.06	3979.06	4.38	29.45	27.95	1.94
4000.00	4030.00	4.40	29.82	28.13	2.21
4198.11	4228.11	4.74	31.47	29.71	3.01
4447.17	4477.17	5.21	32.54	31.21	3.28
4633.96	4663.96	5.53	30.64	31.84	3.09
4820.75	4850.75	5.68	30.03	32.73	2.74
5000.00	4970.00	5.69	30.38	33.91	2.70
5194.34	5164.34	5.73	30.78	34.92	2.98
5443.40	5413.40	5.81	30.19	35.19	3.32
5692.45	5662.45	5.95	30.25	35.33	3.76
5879.25	5849.25	5.99	30.83	35.33	4.12
6000.00	5970.00	6.26	30.52	35.10	4.29
6128.30	6098.30	6.57	30.24	34.77	4.77
6252.83	6222.83	6.64	29.94	34.14	4.76
6377.36	6347.36	6.72	29.71	33.58	4.82
6501.89	6471.89	6.68	29.55	32.81	4.73
6626.42	6596.42	6.58	29.56	32.09	4.74
6875.47	6845.47	6.29	28.82	30.49	4.41
7000.00	6970.00	6.26	28.55	29.90	4.17

Electrical Schematic



Mini-Circuits
ISO 9001 ISO 14001 AS 9100 CERTIFIED

P.O. Box 350166, Brooklyn, New York 11235-0003 (718) 934-4500 Fax (718) 332-4661 The Design Engineers Search Engine Provides ACTUAL Data Instantly at minicircuits.com

For detailed performance specs & shipping online see web site

Notes: 1. Performance and quality attributes and conditions not expressly stated in this specification sheet are intended to be excluded and do not form a part of this specification sheet. 2. Electrical specifications and performance data contained herein are based on Mini-Circuit's applicable established test performance criteria and measurement instructions. 3. The parts covered by this specification sheet are subject to Mini-Circuit's standard limited warranty and terms and conditions (collectively, "Standard Terms"); Purchasers of this part are entitled to the rights and benefits contained therein. For a full statement of the Standard Terms and the exclusive rights and remedies thereunder, please visit Mini-Circuit's website at www.minicircuits.com/MCLStore/terms.jsp.

REV. OR
M93711
ZMX-7GR
ED-3937/1
DJ/TD/CP/AM
070910
Page 1 of 2

