

Coaxial Frequency Mixer

ZMX-7GLHR

Level 10 (LO Power +10 dBm) 3700 to 7000 MHz

Maximum Ratings

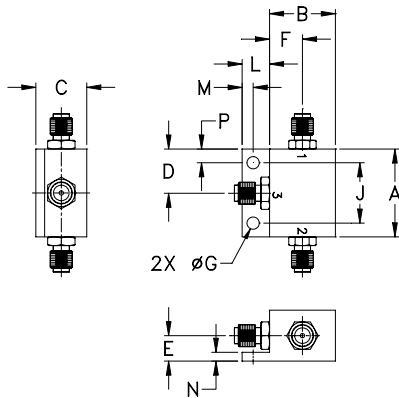
Operating Temperature	-55°C to 100°C
Storage Temperature	-55°C to 100°C
RF Power	50mW
IF Current	40mA

Permanent damage may occur if any of these limits are exceeded.

Coaxial Connections

LO	2
RF	1
IF	3

Outline Drawing



Outline Dimensions (inch/mm)

A	B	C	D	E	F	G	H	
1.00	.75	.58	.50	.29	.38	.140	--	
25.40	19.05	14.73	12.70	7.37	9.65	3.56	--	
J	K	L	M	N	P		wt	
.687	--	.32	.13	.10	.16		grams	25.0
17.45	--	8.13	3.30	2.54	4.06			

Features

- wide frequency range, 3700 to 7000 MHz
- low conversion loss, 5.4 dB typ.
- high L-I isolation, 35 dB typ.

Applications

- SATCOM
- instrumentation
- defense & federal communications
- SHF



CASE STYLE: BU413

Connectors	Model	Price	Qty.
SMA	ZMX-7GLHR	\$71.95 ea.	(1-9)

Electrical Specifications

FREQUENCY (MHz)	CONVERSION LOSS* (dB)	LO-RF ISOLATION (dB)		LO-IF ISOLATION (dB)	
		Typ.	Min.	Typ.	Min.
3700-7000	DC-1500	33	20	35	20

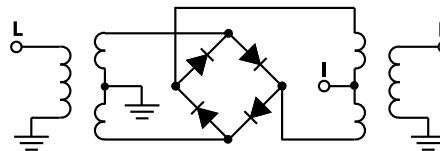
1 dB COMP.: +5 dBm typ.

* Above 750 MHz IF, conversion loss increases up to 9.8 dB max.

Typical Performance Data

Frequency (MHz)		Conversion Loss (dB)	Isolation L-R (dB)	Isolation L-I (dB)	VSWR RF Port (:1)	VSWR LO Port (:1)
RF	LO	LO +10dBm	LO +10dBm	LO +10dBm	LO +10dBm	LO +10dBm
3700.00	3730.00	3.99	32.98	27.03	1.50	1.14
3886.79	3916.79	3.98	31.80	28.45	1.27	1.16
4000.00	4030.00	3.92	32.48	28.87	1.51	1.19
4198.11	4228.11	4.06	34.29	30.39	2.05	1.23
4384.91	4414.91	4.31	35.39	30.87	2.33	1.23
4571.70	4601.70	4.33	34.22	31.36	2.22	1.31
4758.49	4788.49	4.75	32.35	31.67	2.02	1.26
5000.00	4970.00	4.61	33.65	33.33	2.15	1.25
5194.34	5164.34	4.63	33.47	34.18	2.27	1.23
5381.13	5351.13	4.74	31.77	34.40	2.30	1.18
5567.92	5537.92	4.92	31.07	34.26	2.39	1.18
5754.72	5724.72	4.88	32.53	34.46	2.75	1.13
5941.51	5911.51	5.30	32.98	34.47	3.27	1.07
6000.00	5970.00	5.39	33.39	34.42	3.38	1.15
6190.57	6160.57	5.57	33.62	34.18	3.79	1.20
6377.36	6347.36	5.82	34.18	33.86	3.91	1.15
6564.15	6534.15	5.93	35.55	33.39	3.98	1.14
6750.94	6720.94	5.72	35.04	32.76	3.86	1.18
6937.74	6907.74	5.62	34.39	32.13	3.74	1.08
7000.00	6970.00	5.62	34.32	32.02	3.64	1.21

Electrical Schematic



Mini-Circuits
ISO 9001 ISO 14001 AS 9100 CERTIFIED

P.O. Box 350166, Brooklyn, New York 11235-0003 (718) 934-4500 Fax (718) 332-4661 The Design Engineers Search Engine Provides ACTUAL Data Instantly at minicircuits.com

IF/RF MICROWAVE COMPONENTS

For detailed performance specs & shipping online see web site

Notes: 1. Performance and quality attributes and conditions not expressly stated in this specification sheet are intended to be excluded and do not form a part of this specification sheet. 2. Electrical specifications and performance data contained herein are based on Mini-Circuit's applicable established test performance criteria and measurement instructions. 3. The parts covered by this specification sheet are subject to Mini-Circuit's standard limited warranty and terms and conditions (collectively, "Standard Terms"); Purchasers of this part are entitled to the rights and benefits contained therein. For a full statement of the Standard Terms and the exclusive rights and remedies thereunder, please visit Mini-Circuit's website at www.minicircuits.com/MCLStore/terms.jsp.

REV. C
M93711
ZMX-7GLHR
ED-3937/1
DJ/TD/CP/AM
081106
Page 1 of 2

