

Coaxial Attenuator/Switch

ZMAS-3

50Ω Bi-Phase 1 to 200 MHz



Maximum Ratings

Operating Temperature	-55°C to 100°C
Storage Temperature	-55°C to 100°C
Control Current	30mA
Permanent damage may occur if any of these limits are exceeded.	

Coaxial Connections

INPUT	3
OUTPUT	1
CONTROL	2

Features

- wideband, 1 to 200 MHz
- rugged shielded case
- excellent phase and amplitude unbalance
- low insertion loss, 1.6 dB typ.

Applications

- bi-phase modulator
- electronic attenuator

CASE STYLE: M21

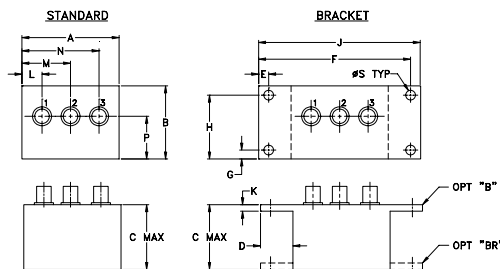
Connectors	Model	Price	Qty.
SMA	ZMAS-3	\$67.95	(1-9)
BRACKET (OPTION "B")		\$5.00	(1+)
BRACKET (OPTION "BR")		\$1.50	(1+)

Attenuator/Switch Electrical Specifications

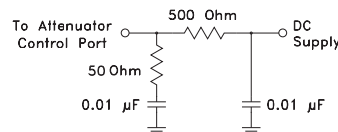
FREQUENCY (MHz)	INSERTION LOSS (dB) ±20 mA	MAX. INPUT PWR (dBm) ±20mA	IN-OUT ISOLATION (dB) 0 mA						BI-PHASE X (±20 mA) Typ.								
			Mid-Band m		Total Range		L		M		U		Δ AMP (dB)		Phase (deg.) deviation from 180°		
IN f _L -f _U	CON	1 dB compr.	no damage	Typ.	Max.	Typ.	Max.	Typ.	Min.	Typ.	Min.	m	Total Range	m	Total Range		
1-200	DC-0.05	15	30	1.4	2	1.6	2.5	65	50	50	40	50	35	0.10	0.1	0.5	1.0

L = low range [f_L to 10 f_L] M = mid range [10 f_L to f_U/2] U = upper range [f_U/2 to f_U] m = [2 f_L to f_U/2]
Performance specifications apply for input power up to 10 dB below stated 1 dB compression.

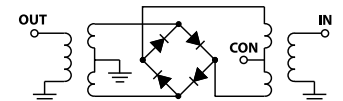
Outline Drawing



suggested control port biasing configuration



electrical schematic

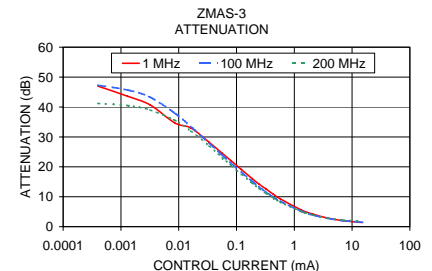
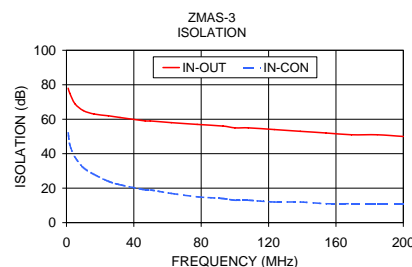
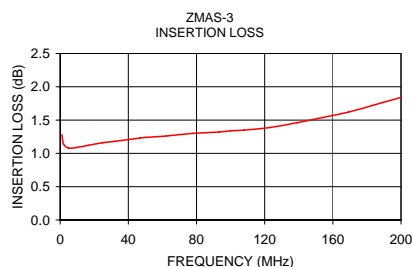


Outline Dimensions (inch/mm)

A	B	C	D	E	F	G	H
1.50	1.13	1.00	.50	.155	2.345	.138	.987
38.10	28.70	25.40	12.70	3.94	59.56	3.51	25.07
J	K	L	M	N	P	S	wt
2.50	.10	.31	.75	1.19	.66	.150	grams
63.50	2.54	7.87	19.05	30.23	16.76	3.81	40.0

Typical Performance Data

Freq. (MHz)	I. Loss (dB) at 20mA	±Control ΔΔAMP (dB)	20mA ΔΔPhase (deg.)	Isolation (in-out) (in-con)		Input R. Loss (dB)	Control Current (mA)	Attenuation (dB)			Phase Δ ref at 15mA Ctrl deg.			Input VSWR			
				1	100			200	1	100	200	1	100	200			
1.0	1.28	0.002	0.01	180.0	78	52	23.5	0.0000	50.3	47.8	41.7	26.3	69.1	69.7	13.6	11.6	8.1
2.0	1.14	0.002	0.01	180.0	75	45	28.1	0.0004	47.0	47.3	41.2	19.0	65.6	65.4	13.5	11.6	8.1
5.0	1.08	0.002	0.01	180.0	69	38	35.4	0.0013	43.6	45.7	40.5	10.3	50.0	58.2	13.3	11.5	8.0
10.0	1.09	0.002	0.01	180.0	65	32	43.0	0.0032	40.7	43.3	39.0	5.7	36.8	46.4	12.9	11.3	7.9
16.4	1.12	0.002	0.01	179.9	63	28	42.7	0.0085	34.7	38.0	35.6	6.3	20.9	29.7	12.5	10.9	7.7
24.9	1.16	0.002	0.01	179.9	62	24	37.5	0.0162	33.0	33.5	32.0	6.6	12.3	19.1	11.7	10.3	7.4
31.8	1.18	0.002	0.01	179.9	61	22	35.2	0.0336	28.2	27.9	27.0	7.2	7.0	10.3	10.5	9.2	6.8
46.8	1.23	0.001	0.02	179.8	59	19	31.6	0.0567	24.5	23.9	23.1	7.5	4.7	6.0	9.3	8.1	6.1
49.8	1.24	0.001	0.02	179.8	59	19	31.0	0.0807	22.0	21.2	20.5	7.7	3.9	4.3	8.3	7.3	5.6
62.2	1.26	0.002	0.02	179.8	58	17	28.7	0.1215	19.1	18.2	17.5	7.5	3.0	2.9	7.1	6.2	4.9
77.6	1.30	0.001	0.02	179.7	57	15	26.4	0.1860	16.1	15.2	14.6	7.1	2.4	1.8	5.8	5.1	4.2
93.0	1.32	0.001	0.02	179.6	56	14	24.4	0.2459	14.2	13.3	12.8	6.5	2.1	1.4	5.0	4.5	3.7
100.0	1.34	0.001	0.02	179.6	55	13	23.5	0.3285	12.5	11.5	11.1	6.3	1.8	1.1	4.3	3.8	3.2
108.0	1.35	0.001	0.02	179.6	55	13	22.6	0.4365	10.8	9.9	9.6	5.7	1.6	0.9	3.6	3.3	2.8
123.4	1.39	0.001	0.02	179.5	54	12	21.0	0.5714	9.3	8.5	8.2	5.1	1.4	0.7	3.1	2.8	2.5
138.8	1.46	0.001	0.02	179.5	53	12	19.5	1.3114	5.6	5.2	5.1	3.3	0.8	0.3	2.0	1.9	1.7
154.2	1.54	0.001	0.02	179.4	52	11	18.2	2.0989	4.2	3.9	3.9	2.3	0.6	0.3	1.6	1.6	1.5
169.2	1.62	0.001	0.02	179.5	51	11	17.0	3.7220	2.9	2.8	2.9	1.3	0.3	0.1	1.3	1.3	1.3
184.6	1.73	0.001	0.02	179.5	51	11	15.9	7.0357	2.0	2.0	2.2	0.5	0.2	0.0	1.2	1.2	1.2
200.0	1.84	0.002	0.03	179.6	50	11	14.8	15.1415	1.4	1.5	1.8	0.0	0.0	0.0	1.1	1.1	1.1



Mini-Circuits
ISO 9001 ISO 14001 AS 9100 CERTIFIED
The Design Engineers Search Engine Provides ACTUAL Data Instantly at minicircuits.com
I/F/R MICROWAVE COMPONENTS

For detailed performance specs & shopping online see web site

P.O. Box 350166, Brooklyn, New York 11235-0003 (718) 934-4500 Fax (718) 332-4661

Notes: 1. Performance and quality attributes and conditions not expressly stated in this specification sheet are intended to be excluded and do not form a part of this specification sheet. 2. Electrical specifications and performance data contained herein are based on Mini-Circuit's applicable established test performance criteria and measurement instructions. 3. The parts covered by this specification sheet are subject to Mini-Circuits standard limited warranty and terms and conditions (collectively, "Standard Terms"); Purchasers of this part are entitled to the rights and benefits contained therein. For a full statement of the Standard Terms and the exclusive rights and remedies thereunder, please visit Mini-Circuits' website at www.minicircuits.com/MCLStore/terms.jsp.

REV. OR
M96904
ZMAS-3
WP/TD/CP
090728