

Coaxial Frequency Mixer

ZLW-11H+ ZLW-11H

Level 17 (LO Power +17 dBm) 10 to 3000 MHz



CASE STYLE: M21

Maximum Ratings

Operating Temperature	-55°C to 100°C
Storage Temperature	-55°C to 100°C
RF Power	200mW
IF Current	40mA

Permanent damage may occur if any of these limits are exceeded.

Coaxial Connections

LO	1
RF	3
IF	2

Features

- low conversion loss, 6.83 dB typ.
- wideband, 10 to 3000 MHz
- rugged shielded case

Applications

- cellular
- GPS
- MMDS
- PCS
- instrumentation
- terrestrial radio

Connectors	Model	Price	Qty.
SMA	ZLW-11H(+)	\$99.95 ea.	(1-9)
BRACKET (OPTION "B")		\$5.00	(1+)
BRACKET (OPTION "BR")		\$1.50	(1+)

+ RoHS compliant in accordance with EU Directive (2002/95/EC)

The +Suffix identifies RoHS Compliance. See our web site for RoHS Compliance methodologies and qualifications.

Electrical Specifications

FREQUENCY (MHz)	CONVERSION LOSS (dB)	LO-RF ISOLATION (dB)						LO-IF ISOLATION (dB)									
		Mid-Band m		Total Range		L		M		U		L		M		U	
LO/RF f_L - f_U	IF \bar{X} σ Max.	\bar{X}	σ	Max.	Max.	Typ.	Min.	Typ.	Min.	Typ.	Min.	Typ.	Min.	Typ.	Min.	Typ.	Min.
10-3000	10-1000	6.83	0.09	10.0	12.0	27	20	25	18	23	16	27	20	25	18	23	16

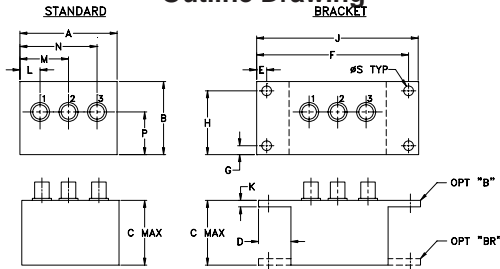
1 dB COMP.: +10 dBm typ.

L = low range [f_L to $10 f_L$] M = mid range [$10 f_L$ to $f_U/2$] U = upper range [$f_U/2$ to f_U]
m = mid band [$2f_L$ to $f_U/2$]

Typical Performance Data

Frequency (MHz)		Conversion Loss (dB)	Isolation L-R (dB)	Isolation L-I (dB)	VSWR RF Port (:1)	VSWR LO Port (:1)
RF	LO	LO +17dBm	LO +17dBm	LO +17dBm	LO +17dBm	LO +17dBm
10.00	40.00	6.43	32.26	35.01	1.13	2.07
20.00	50.00	6.58	33.52	36.23	1.07	2.19
103.44	73.44	6.60	32.25	33.97	1.08	2.01
200.00	170.00	6.78	30.89	32.03	1.13	1.96
290.31	260.31	6.75	29.76	30.61	1.18	1.91
500.00	470.00	6.94	28.74	29.28	1.29	1.83
570.63	540.69	6.81	28.80	29.04	1.34	1.81
757.50	727.50	7.00	28.06	28.08	1.48	1.81
944.38	913.91	7.05	28.00	26.87	1.66	1.80
1037.80	1007.40	7.37	28.67	26.49	1.72	1.74
1318.10	1288.00	6.81	27.69	26.66	1.92	1.69
1505.00	1474.90	6.68	27.57	27.97	1.99	1.65
1598.40	1568.30	6.65	27.30	28.78	1.75	1.91
1785.30	1755.00	6.71	27.75	28.96	1.89	1.91
1972.20	1942.10	6.57	29.51	31.44	1.76	1.75
2065.60	2035.10	6.76	28.94	33.79	1.68	1.66
2252.50	2222.10	6.61	30.22	36.80	1.68	1.49
2439.40	2408.60	6.63	31.19	37.00	1.69	1.14
2626.30	2596.00	6.95	30.21	30.13	1.49	1.26
3000.00	2969.30	8.58	32.46	26.88	1.90	2.47

Outline Drawing

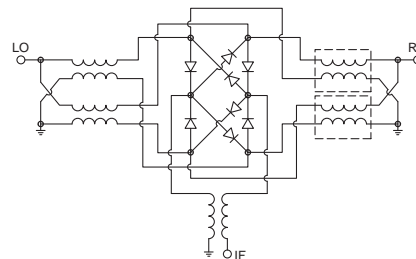


Outline Dimensions (inch/mm)

A	B	C	D	E	F	G	H
1.50	1.13	1.00	.50	.155	2.345	.138	.987
38.10	28.70	25.40	12.70	3.94	59.56	3.51	25.07

J	K	L	M	N	P	S	wt
2.50	.10	.31	.75	1.19	.66	.150	grams
63.50	2.54	7.87	19.05	30.23	16.76	3.81	40.0

Electrical Schematic



Mini-Circuits
ISO 9001 ISO 14001 AS 9100 CERTIFIED

For detailed performance specs & shopping online see web site

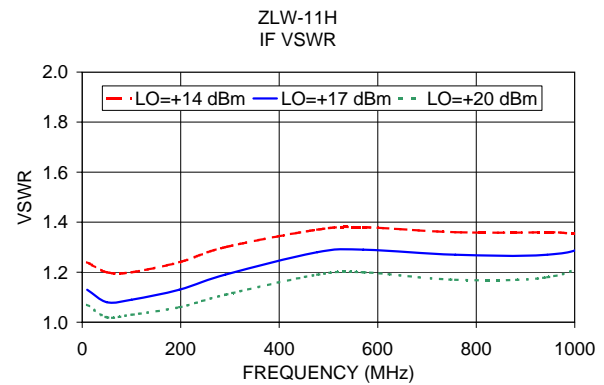
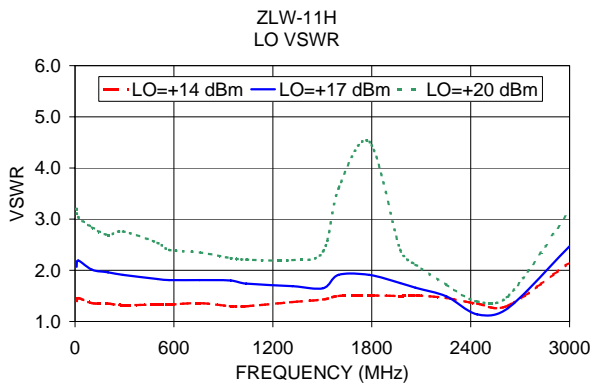
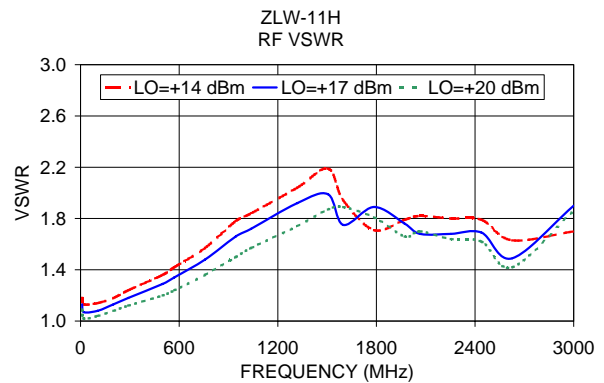
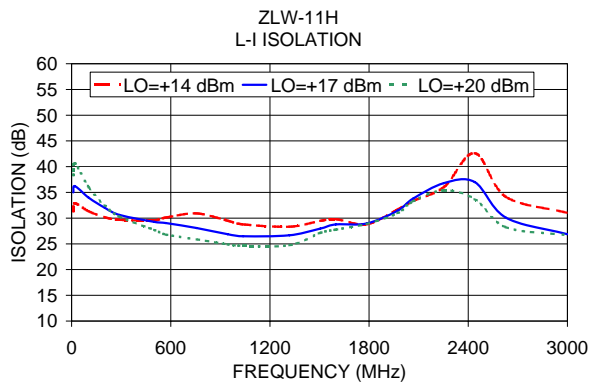
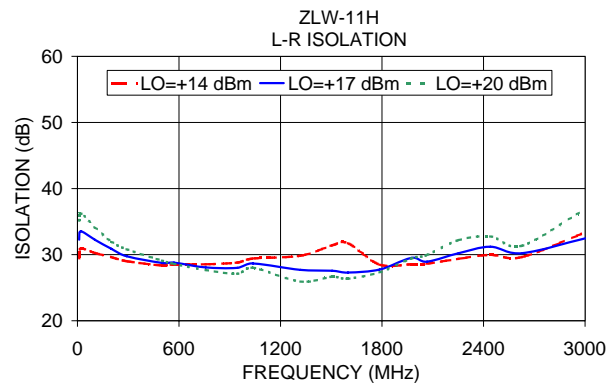
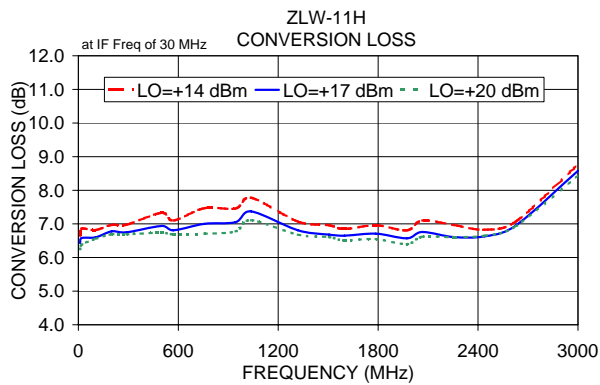
P.O. Box 350166, Brooklyn, New York 11235-0003 (718) 934-4500 Fax (718) 332-4661 The Design Engineers Search Engine Provides ACTUAL Data Instantly at minicircuits.com

Notes: 1. Performance and quality attributes and conditions not expressly stated in this specification sheet are intended to be excluded and do not form a part of this specification sheet. 2. Electrical specifications and performance data contained herein are based on Mini-Circuit's applicable established test performance criteria and measurement instructions. 3. The parts covered by this specification sheet are subject to Mini-Circuit's standard limited warranty and terms and conditions (collectively, "Standard Terms"); Purchasers of this part are entitled to the rights and benefits contained therein. For a full statement of the Standard Terms and the exclusive rights and remedies thereunder, please visit Mini-Circuit's website at www.minicircuits.com/MCLStore/terms.jsp.

REV. A
M120125
ZLW-11H
DJ/TD/CP/AM
081030
Page 1 of 2

Performance Charts

ZLW-11H+ ZLW-11H



ISO 9001 ISO 14001 AS 9100 CERTIFIED

P.O. Box 350166, Brooklyn, New York 11235-0003 (718) 934-4500 Fax (718) 332-4661 The Design Engineers Search Engine Provides ACTUAL Data Instantly at minicircuits.com

IF/RF MICROWAVE COMPONENTS

For detailed performance specs & shopping online see web site

Notes: 1. Performance and quality attributes and conditions not expressly stated in this specification sheet are intended to be excluded and do not form a part of this specification sheet. 2. Electrical specifications and performance data contained herein are based on Mini-Circuit's applicable established test performance criteria and measurement instructions. 3. The parts covered by this specification sheet are subject to Mini-Circuit's standard limited warranty and terms and conditions (collectively, "Standard Terms"); Purchasers of this part are entitled to the rights and benefits contained therein. For a full statement of the Standard Terms and the exclusive rights and remedies thereunder, please visit Mini-Circuit's website at www.minicircuits.com/MCLStore/terms.jsp.