

Coaxial Frequency Mixer

Level 23 (LO Power +23 dBm) 10 to 2400 MHz

ZFY-11



BNC version shown
CASE STYLE: K18

Maximum Ratings

Operating Temperature	-55°C to 100°C
Storage Temperature	-55°C to 100°C
RF Power	350mW
IF Current	40mA

Permanent damage may occur if any of these limits are exceeded.

Coaxial Connections

LO	1
RF	2
IF	3

Features

- low conversion loss, 7.40 dB typ.
- wideband, 10 to 2400 MHz
- rugged shielded case

Applications

- UHF/VHF
- cellular
- satellite distribution
- GPS
- PCS/DCS

Connectors	Model	Price	Qty.
BNC	ZFY-11	\$84.95	(1-9)
SMA	ZFY-11-S	\$89.95	(1-9)
BRACKET (OPTION "B")		\$2.50	(1+)

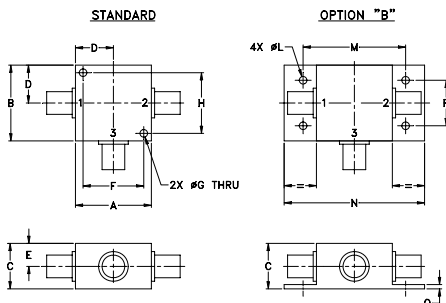
Electrical Specifications

FREQUENCY (MHz)	CONVERSION LOSS (dB)	LO-RF ISOLATION (dB)			LO-IF ISOLATION (dB)		
		L	M	U	L	M	U
10-2400	7.40	28	25	25	28	26	25

1 dB COMP.: +20 dBm typ.

L = low range [f_L to $10 f_L$] M = mid range [$10 f_L$ to $f_U/2$] U = upper range [$f_U/2$ to f_U]
m = mid band [$2 f_L$ to $f_U/2$]

Outline Drawing



Outline Dimensions (inch/mm)

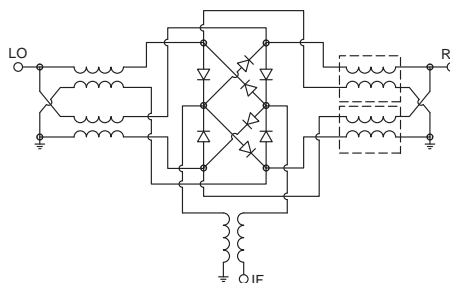
A	B	C	D	E	F	G	H
1.25	1.25	.75	.63	.38	1.00	.125	1.000
31.75	31.75	19.05	16.00	9.65	25.40	3.18	25.40

J	K	L	M	N	P	Q	wt
--	--	.125	1.688	2.18	.75	.07	grams
--	--	3.18	42.88	55.37	19.05	1.78	70.0

Typical Performance Data

Frequency (MHz)	Conversion Loss (dB)	Isolation L-R (dB)	Isolation L-I (dB)	VSWR RF Port (:1)	VSWR LO Port (:1)
10.00	7.46	41.65	30.72	1.55	1.24
20.00	7.51	43.95	31.06	1.54	1.22
50.00	7.74	44.45	30.74	1.51	1.31
87.10	7.81	44.86	29.91	1.50	1.26
100.00	7.66	44.68	29.62	1.49	1.25
200.00	7.59	46.21	28.67	1.47	1.22
318.39	8.03	41.22	28.91	1.45	1.23
500.00	7.47	37.07	29.62	1.43	1.28
626.77	7.57	33.53	30.05	1.38	1.34
780.97	7.27	33.54	31.66	1.34	1.29
1000.00	7.77	33.08	33.53	1.38	1.23
1089.36	7.84	33.62	34.45	1.49	1.33
1243.54	8.04	34.16	36.92	1.59	1.35
1397.74	8.31	33.51	37.46	1.82	1.48
1500.00	8.18	34.49	39.38	1.99	1.58
1706.13	8.31	34.41	45.70	2.18	1.69
2000.00	8.17	37.07	38.82	2.32	1.71
2091.61	8.07	37.89	36.35	2.32	1.68
2245.81	7.59	37.54	34.57	2.28	1.74
2400.00	7.11	35.91	33.44	2.15	1.77

Electrical Schematic



Mini-Circuits
ISO 9001 ISO 14001 AS 9100 CERTIFIED

For detailed performance specs & shopping online see web site

P.O. Box 350166, Brooklyn, New York 11235-0003 (718) 934-4500 Fax (718) 332-4661 The Design Engineers Search Engine Provides ACTUAL Data Instantly at minicircuits.com

IF/RF MICROWAVE COMPONENTS

Notes: 1. Performance and quality attributes and conditions not expressly stated in this specification sheet are intended to be excluded and do not form a part of this specification sheet. 2. Electrical specifications and performance data contained herein are based on Mini-Circuit's applicable established test performance criteria and measurement instructions. 3. The parts covered by this specification sheet are subject to Mini-Circuits standard limited warranty and terms and conditions (collectively, "Standard Terms"); Purchasers of this part are entitled to the rights and benefits contained therein. For a full statement of the Standard Terms and the exclusive rights and remedies thereunder, please visit Mini-Circuits' website at www.minicircuits.com/MCLStore/terms.jsp.

REV. OR
M93711
ZFY-11
DJ/TD/CP
080310
Page 1 of 2

