

Coaxial High Isolation Switch

ZFSWHA-1-20+

50Ω SPST, Absorptive DC to 2000 MHz



CASE STYLE: J17

Connectors	Model	Price	Qty.
SMA	ZFSWHA-1-20+	\$74.95	(1-9)
BRACKET (OPTION "B")		\$2.50	(1+)

+ RoHS compliant in accordance with EU Directive (2002/95/EC)

The +Suffix has been added in order to identify RoHS Compliance. See our web site for RoHS Compliance methodologies and qualifications.

Maximum Ratings

Operating Temperature	-55°C to 100°C
Storage Temperature	-55°C to 150°C
Input Power	see Table & Note 1
Control Current	see Table
Permanent damage may occur if any of these limits are exceeded.	

Coaxial Connections

RF IN	2
RF OUT	3
CONTROL 1	1
CONTROL 2	S

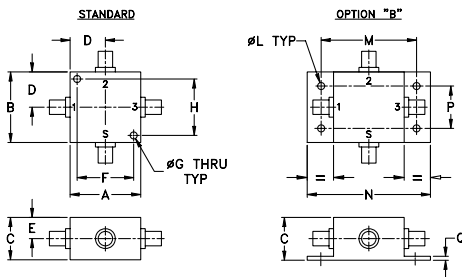
Features

- wideband, DC to 2000 MHz
- low insertion loss, 1.3 dB typ.
- low video leakage 30 mVp-p typ.
- very fast switching

Applications

- PCN
- cellular
- antenna switching

Outline Drawing



Outline Dimensions (inch/mm)

A	B	C	D	E	F	G	H	
1.25	1.25	.75	.63	.38	1.000	.125	1.000	
31.75	31.75	19.05	16.00	9.65	25.40	3.18	25.40	
J	K	L	M	N	P	Q	wt	
--	--	.125	1.688	2.18	.75	.07	grams	
--	--	3.18	42.88	55.37	19.05	1.78	75.0	

High Isolation Switch Electrical Specifications

FREQ. (MHz)	INSERTION LOSS (dB)						1dB COMPR. (dBm)			IN-OUT ISOLATION (dB)						
	DC-100 MHz		100-1000 MHz		1000-2000 MHz		DC-100 MHz	100-1000 MHz	1000-2000 MHz	DC-100 MHz		100-1000 MHz		1000-2000 MHz		
f _L	f _U	Typ.	Max.	Typ.	Max.	Typ.	Max.	Typ.	Typ.	Typ.	Typ.	Min.	Typ.	Min.	Typ.	Min.
DC	2000	0.8	1.2	1.3	1.7	1.3	1.7	19	19	26	75	60	65	58	65	58

Additional Specifications

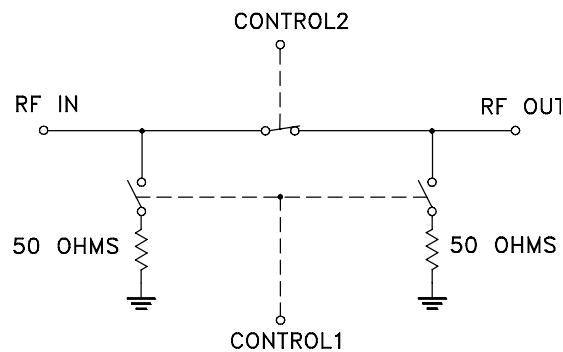
Control Voltage, volts	-0.2 to 0		
Low State			
High State (negative) for compression specs for other specs	-8 -5 to -8		
Control Current, mA	0.2 Max. to -8V 0.5 Max. at -9V to -12V Typ.		
RF Power Input Max. ¹	DC-.02	.02-5	.5-2
Steady State 0/-8V	+23	+30	+33
As Modulator ²	+14.5	+20	+27
Video Leakage ³ , mVp-p	30 Typ., 50 Max.		
VSWR (:1)	DC-0.2 GHz		0.2-2 GHz
ON, all ports	1.25 Max.		1.5 Max.
OFF, Input	1.25 Max.		1.5 Max.
OFF, Output	1.4 Max.		1.5 Max.
Rise/Fall Time (10%-90%), ns	3 Typ., 5 Max.		
Switching Time, 50% of control to 90% RF (Turn-on), ns	7 Typ., 10 Max.		
10% RF (Turn-off), ns	3 Typ., 10 Max.		

CONTROL LOGIC

Control Ports		RF outputs
1	2	
-V	0	On
0	-V	Off

1. Above 20°C derate power linearly to zero at 150°C
2. In modulator service, unrestricted switching is permitted with RF applied.
3. Video leakage or break through is defined as leakage of switching signal to RF output ports.
4. All RF connections must be DC blocked or held at 0V DC.

Electrical Schematic



Mini-Circuits®
ISO 9001 ISO 14001 AS 9100 CERTIFIED

For detailed performance specs & shopping online see web site

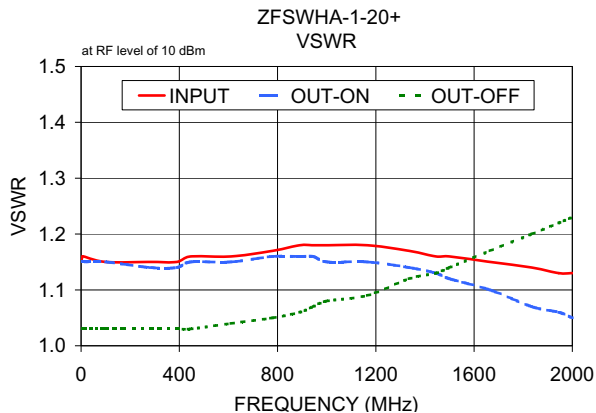
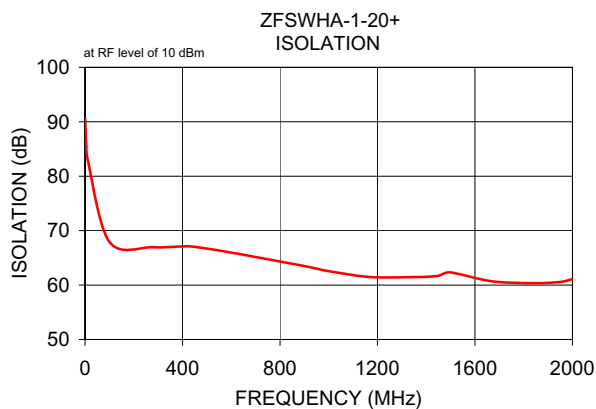
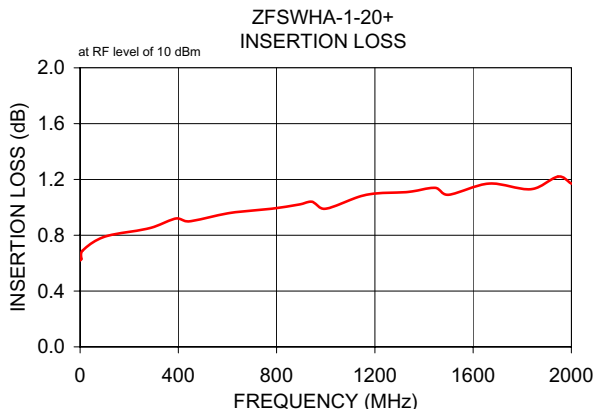
P.O. Box 350166, Brooklyn, New York 11235-0003 (718) 934-4500 Fax (718) 332-4661 *The Design Engineers Search Engine* Provides ACTUAL Data Instantly at minicircuits.com

Notes: 1. Performance and quality attributes and conditions not expressly stated in this specification sheet are intended to be excluded and do not form a part of this specification sheet. 2. Electrical specifications and performance data contained herein are based on Mini-Circuit's applicable established test performance criteria and measurement instructions. 3. The parts covered by this specification sheet are subject to Mini-Circuit's standard limited warranty and terms and conditions (collectively, "Standard Terms"); Purchasers of this part are entitled to the rights and benefits contained therein. For a full statement of the Standard Terms and the exclusive rights and remedies thereunder, please visit Mini-Circuit's website at www.minicircuits.com/MCLStore/terms.jsp.

REV. B
M121747
ZFSWHA-1-20
WP/CP/AM
090717
Page 1 of 2

Typical Performance Data

FREQ. (MHz)	ON INSERTION LOSS (dB) (ctrl1 @ -8V, ctrl2 @ 0V) IN-OUT		OFF ISOLATION (dB) (ctrl 1 @ 0V, ctrl 2 @ -8V) IN-OUT		VSWR		
	\bar{X}	σ	\bar{X}	σ	IN \bar{X}	OUT	
						ON \bar{X}	OFF \bar{X}
0.30	0.62	0.01	90.61	3.68	1.15	1.15	1.03
5.30	0.63	0.01	85.48	6.29	1.16	1.15	1.03
10.30	0.69	0.01	83.23	4.25	1.16	1.15	1.03
100.29	0.79	0.01	67.92	1.22	1.15	1.15	1.03
280.26	0.85	0.01	66.96	1.83	1.15	1.14	1.03
390.24	0.92	0.00	67.09	1.35	1.15	1.14	1.03
445.23	0.90	0.01	67.05	1.41	1.16	1.15	1.03
610.21	0.96	0.01	65.89	1.85	1.16	1.15	1.04
780.18	0.99	0.01	64.48	1.97	1.17	1.16	1.05
890.17	1.02	0.01	63.58	2.32	1.18	1.16	1.06
945.16	1.04	0.01	63.07	2.05	1.18	1.16	1.07
1000.15	0.99	0.00	62.55	1.47	1.18	1.15	1.08
1165.13	1.09	0.02	61.49	2.35	1.18	1.15	1.09
1335.10	1.11	0.02	61.45	1.70	1.17	1.14	1.12
1445.08	1.14	0.02	61.66	1.64	1.16	1.13	1.13
1500.08	1.09	0.02	62.32	2.10	1.16	1.12	1.14
1665.05	1.17	0.01	60.72	1.78	1.15	1.10	1.17
1835.03	1.13	0.01	60.34	0.70	1.14	1.07	1.20
1945.01	1.22	0.03	60.54	1.60	1.13	1.06	1.22
2000.00	1.17	0.01	61.08	1.47	1.13	1.05	1.23



For detailed performance specs & shopping online see web site

P.O. Box 350166, Brooklyn, New York 11235-0003 (718) 934-4500 Fax (718) 332-4661 *The Design Engineers Search Engine* Provides ACTUAL Data Instantly at minicircuits.com

IF/RF MICROWAVE COMPONENTS

Notes: 1. Performance and quality attributes and conditions not expressly stated in this specification sheet are intended to be excluded and do not form a part of this specification sheet. 2. Electrical specifications and performance data contained herein are based on Mini-Circuit's applicable established test performance criteria and measurement instructions. 3. The parts covered by this specification sheet are subject to Mini-Circuits standard limited warranty and terms and conditions (collectively, "Standard Terms"); Purchasers of this part are entitled to the rights and benefits contained therein. For a full statement of the Standard Terms and the exclusive rights and remedies thereunder, please visit Mini-Circuits' website at www.minicircuits.com/MCLStore/terms.jsp.