

Coaxial

Power Splitter/Combiner

ZFSCJ-2-4+

2 Way-180° 50Ω 50 to 1000 MHz



CASE STYLE: K18

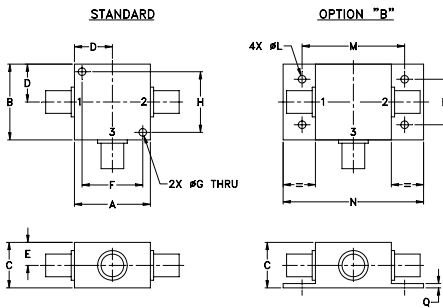
Maximum Ratings

Operating Temperature	-55°C to 100°C
Storage Temperature	-55°C to 100°C
Power Input (as a splitter)	1W max.
Internal Dissipation	0.125W max.
Permanent damage may occur if any of these limits are exceeded.	

Coaxial Connections

SUM PORT	3
PORT 1	1
PORT 2	2

Outline Drawing



Outline Dimensions (inch/mm)

A	B	C	D	E	F	G	H
1.25	1.25	.75	.63	1.00	.125	1.000	
31.75	31.75	19.05	16.00	25.40	3.18	25.40	
J	K	L	M	N	P	Q	wt
--	--	.125	1.688	2.18	.75	.07	grams
--	--	3.18	42.88	55.37	19.05	1.78	70.0

Features

- low insertion loss, 1.4 dB typ.
- high isolation, 28 dB typ.
- rugged shielded case

Applications

- VHF/UHF
- cellular
- signal processing

Connectors	Model	Price	Qty.
SMA	ZFSCJ-2-4-S+	\$69.95	(1-9)
BRACKET (OPTION "B")		\$2.50	(1+)

+ RoHS compliant in accordance with EU Directive (2002/95/EC)

The +Suffix has been added in order to identify RoHS Compliance. See our web site for RoHS Compliance methodologies and qualifications.

Electrical Specifications

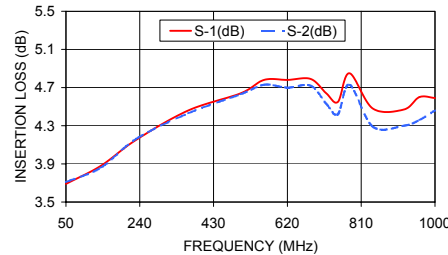
FREQ. RANGE (MHz)	ISOLATION (dB)				INSERTION LOSS (dB) ABOVE 3.0 dB				PHASE UNBALANCE (Degrees)		AMPLITUDE UNBALANCE (dB)	
	L		U		L		U		L	U	L	U
	Typ.	Min.	Typ.	Min.	Typ.	Max.	Typ.	Max.	Max.	Max.	Max.	Max.
f _L -f _U												
50-1000	30	20	25	18	1.2	1.9	1.6	2.4	6	7	0.6	0.6

L = low range [f_L to 10 f_L] U = upper range [f_U/2 to f_U]

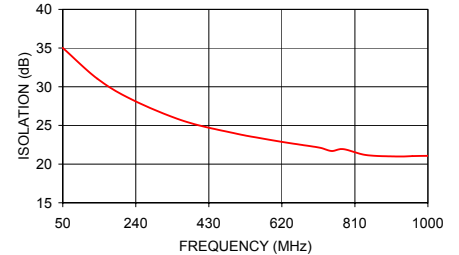
Typical Performance Data

Frequency (MHz)	Insertion Loss (dB)		Amplitude Unbalance (dB)	Isolation (dB)	Phase Unbalance (deg.)	VSWR S	VSWR 1	VSWR 2
	S-1	S-2						
50.00	3.69	3.71	0.02	35.02	180.77	1.22	1.20	1.27
140.00	3.88	3.86	0.01	31.04	179.44	1.42	1.32	1.47
230.00	4.15	4.16	0.00	28.34	178.79	1.66	1.47	1.72
365.00	4.46	4.43	0.03	25.57	177.86	1.95	1.66	2.07
500.00	4.64	4.63	0.01	23.95	177.94	2.10	1.77	2.30
560.00	4.78	4.73	0.05	23.39	177.67	2.09	1.78	2.35
620.00	4.78	4.70	0.08	22.87	178.11	2.04	1.78	2.36
680.00	4.79	4.72	0.07	22.42	178.17	1.96	1.75	2.34
720.00	4.64	4.53	0.11	22.11	178.53	1.89	1.72	2.31
750.00	4.55	4.42	0.13	21.69	178.68	1.83	1.70	2.28
780.00	4.85	4.73	0.12	21.93	178.61	1.76	1.66	2.25
840.00	4.48	4.29	0.19	21.17	179.47	1.61	1.59	2.16
920.00	4.47	4.30	0.17	20.99	180.61	1.42	1.49	2.05
960.00	4.60	4.36	0.23	21.04	180.29	1.33	1.44	1.99
1000.00	4.59	4.46	0.13	21.07	178.64	1.25	1.39	1.95

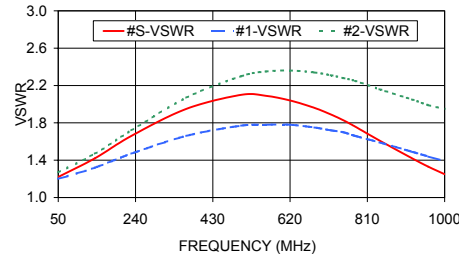
ZFSCJ-2-4+ INSERTION LOSS



ZFSCJ-2-4+ ISOLATION



ZFSCJ-2-4+ VSWR



Electrical Schematic



Mini-Circuits®
ISO 9001 ISO 14001 AS 9100 CERTIFIED

minicircuits.com

P.O. Box 350166, Brooklyn, New York 11235-0003 (718) 934-4500 Fax (718) 332-4661 For detailed performance specs & shopping online see Mini-Circuits web site



The Design Engineers Search Engine Provides ACTUAL Data Instantly From MINI-CIRCUITS At: www.minicircuits.com

REV. B
M120055
ZFSCJ-2-4+
HY/TD/CP/AM
081203

IF/RF MICROWAVE COMPONENTS