

Power Splitter/Combiner

ZFSC-4375

4 Way-0° 75Ω 50 to 90 MHz



Maximum Ratings

Operating Temperature	-55°C to 100°C
Storage Temperature	-55°C to 100°C
Power Input (as a splitter)	1W max.
Internal Dissipation	0.250W max.

Permanent damage may occur if any of these limits are exceeded.

Coaxial Connections

SUM PORT	S
PORT 1	1
PORT 2	2
PORT 3	3
PORT 4	4

Features

- high isolation, 34 dB typ.
- low insertion loss, 0.3 dB typ.
- rugged shielded case
- excellent VSWR, 1.05:1 typ.

Applications

- VHF
- radio communication

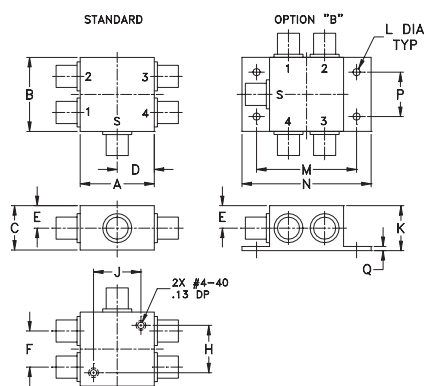
CASE STYLE: G15

Connectors	Model	Price	Qty.
BNC	ZFSC-4375	\$89.95	(1-9)
BRACKET (OPTION "B")		\$2.50	(1+)

Electrical Specifications

FREQ. RANGE (MHz)	ISOLATION (dB)		INSERTION LOSS (dB) ABOVE 6.0 dB		PHASE UNBALANCE (Degrees)	AMPLITUDE UNBALANCE (dB)
	Typ.	Min.	Typ.	Max.		
f_L - f_U					Max.	Max.
50-90	34	30	0.3	0.8	4	0.15

Outline Drawing

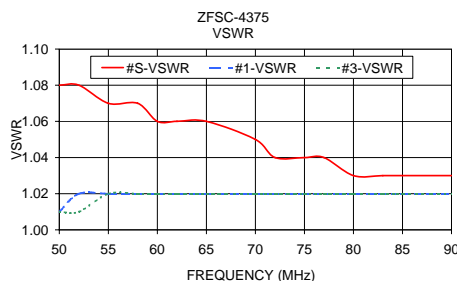
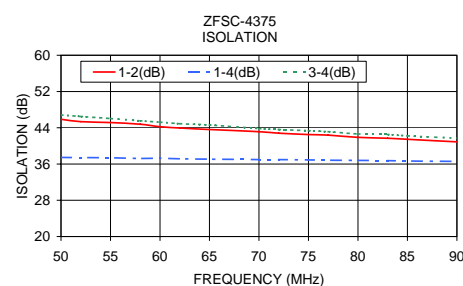
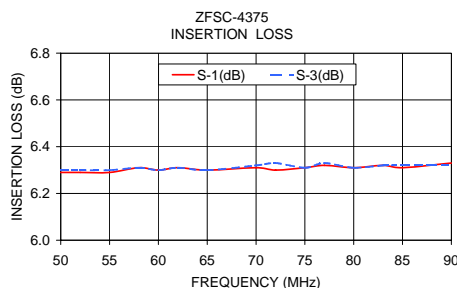


Outline Dimensions (inch/mm)

A	B	C	D	E	F	G	H
1.25	1.25	.75	.63	.38	.61	--	.80
31.75	31.75	19.05	16.00	9.65	15.49	--	20.32
J	K	L	M	N	P	Q	wt
.80	.76	.125	1.688	2.18	.75	.07	grams
20.32	19.30	3.18	42.88	55.37	19.05	1.78	85.0

Typical Performance Data

Freq. (MHz)	Insertion Loss (dB)				Amp. Unbal. (dB)	Isolation (dB)			Phase Unbal. (deg.)	VSWR S	VSWR 1	VSWR 2	VSWR 3	VSWR 4
	S-1	S-2	S-3	S-4		1-2	1-4	3-4						
50.00	6.29	6.29	6.30	6.29	0.01	45.87	37.46	46.83	0.25	1.08	1.01	1.01	1.01	1.01
52.00	6.29	6.29	6.30	6.30	0.01	45.35	37.43	46.49	0.22	1.08	1.02	1.01	1.01	1.01
55.00	6.29	6.29	6.30	6.29	0.01	45.15	37.39	46.06	0.28	1.07	1.02	1.01	1.02	1.02
58.00	6.31	6.30	6.31	6.31	0.01	44.78	37.24	45.54	0.28	1.07	1.02	1.02	1.02	1.02
60.00	6.30	6.30	6.30	6.30	0.01	44.24	37.29	45.24	0.40	1.06	1.02	1.02	1.02	1.02
62.00	6.31	6.31	6.31	6.31	0.01	43.95	37.16	44.90	0.28	1.06	1.02	1.02	1.02	1.02
65.00	6.30	6.31	6.30	6.31	0.01	43.62	37.08	44.62	0.37	1.06	1.02	1.02	1.02	1.02
70.00	6.31	6.32	6.32	6.32	0.01	43.13	36.98	43.83	0.33	1.05	1.02	1.02	1.02	1.02
72.00	6.30	6.31	6.33	6.32	0.02	42.80	36.99	43.62	0.37	1.04	1.02	1.02	1.02	1.02
75.00	6.31	6.31	6.31	6.31	0.01	42.50	36.91	43.36	0.39	1.04	1.02	1.02	1.02	1.02
77.00	6.32	6.32	6.33	6.32	0.01	42.38	36.84	43.13	0.41	1.04	1.02	1.02	1.02	1.02
80.00	6.31	6.32	6.31	6.31	0.01	41.89	36.81	42.65	0.36	1.03	1.02	1.02	1.02	1.02
83.00	6.32	6.32	6.32	6.33	0.02	41.68	36.76	42.52	0.38	1.03	1.02	1.02	1.02	1.02
85.00	6.31	6.32	6.32	6.32	0.01	41.46	36.66	42.21	0.38	1.03	1.02	1.02	1.02	1.02
90.00	6.33	6.32	6.32	6.32	0.01	40.89	36.58	41.70	0.54	1.03	1.02	1.02	1.02	1.02



electrical schematic



For detailed performance specs & shopping online see web site

P.O. Box 350166, Brooklyn, New York 11235-0003 (718) 934-4500 Fax (718) 332-4661 The Design Engineers Search Engine Provides ACTUAL Data Instantly at minicircuits.com

REV. OR
M96470
ZFSC-4375
HY/TD/CP
090827

Notes: 1. Performance and quality attributes and conditions not expressly stated in this specification sheet are intended to be excluded and do not form a part of this specification sheet. 2. Electrical specifications and performance data contained herein are based on Mini-Circuit's applicable established performance criteria and measurement instructions. 3. The parts covered by this specification sheet are subject to Mini-Circuits standard limited warranty and terms and conditions (collectively, "Standard Terms"); Purchasers of this part are entitled to the rights and benefits contained therein. For a full statement of the Standard Terms and the exclusive rights and remedies thereunder, please visit Mini-Circuits' website at www.minicircuits.com/MCLStore/terms.jsp.