

Coaxial Power Splitter/Combiner

ZFSC-24-11

24 Way-0° 50Ω 1 to 200 MHz

Maximum Ratings

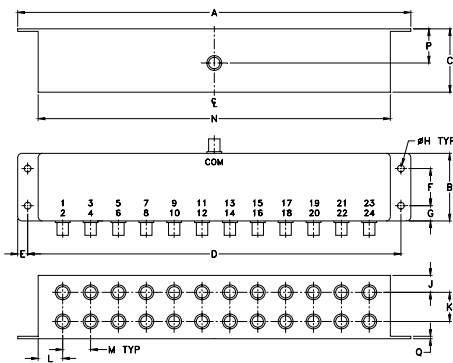
Operating Temperature	-55°C to 100°C
Storage Temperature	-55°C to 100°C
Power Input (as a splitter)	1W max.
Internal Dissipation	0.87W max.

Permanent damage may occur if any of these limits are exceeded.

Coaxial Connections

SUM PORT	S (COM)
PORT 1,2,3,4.....,24	1,2,3,4.....,24

Outline Drawing



Outline Dimensions (inch/mm)

A	B	C	D	E	F	G	H
9.31	1.60	1.50	8.84	.24	.88	.36	.160
236.47	40.64	38.10	224.54	6.10	22.35	9.14	4.06
J	K	L	M	N	P	Q	wt.
.40	.69	.54	.66	8.34	.81	.06	grams
10.16	17.53	13.72	16.76	211.84	20.57	1.52	490.0

Features

- rugged shielded case
- good isolation, 22 dB typ.

Applications

- HF/VHF
- test set-ups
- instrumentation



BNC version shown

CASE STYLE: R31

Connectors	Model	Price	Qty.
BNC	ZFSC-24-11	\$274.95	(1-9)
SMA	ZFSC-24-11-S	\$339.95	(1-9)

Electrical Specifications

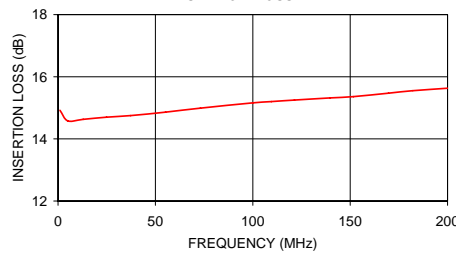
FREQ. RANGE (MHz)	ISOLATION (dB)						INSERTION LOSS (dB) ABOVE 13.8 dB						AMPLITUDE UNBALANCE (dB)		
	L		M		U		L		M		U		L	M	U
	Typ.	Min.	Typ.	Min.	Typ.	Typ.	Typ.	Max.	Typ.	Max.	Typ.	Max.	Max.	Max.	Max.
1-200	33	25	22	20	20	17	0.9	1.7	1.0	1.8	1.3	2.2	0.6	0.8	0.8

L = low range [f_L to $10 f_L$] M = mid range [$10 f_L$ to $f_U/2$] U = upper range [$f_U/2$ to f_U]

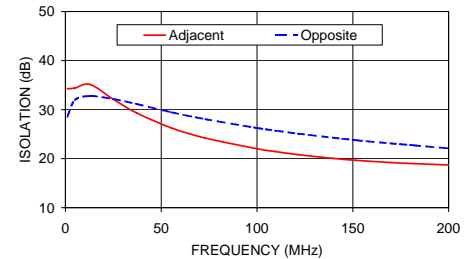
Typical Performance Data

Freq. (MHz)	Insertion Loss (dB)	Amplitude Unbalance (dB)	Isolation (dB)		VSWR S	VSWR OUTPUT	
			S-1	Adjacent			Opposite
			1.00	14.92			0.03
5.00	14.58	0.01	34.41	31.97	1.17	1.25	
12.90	14.63	0.02	35.13	32.76	1.13	1.20	
24.90	14.70	0.03	32.14	32.17	1.17	1.19	
37.30	14.75	0.04	29.30	31.14	1.21	1.21	
55.20	14.86	0.03	26.29	29.48	1.29	1.21	
73.10	14.99	0.03	24.20	28.05	1.34	1.22	
100.00	15.16	0.04	22.02	26.27	1.36	1.23	
109.50	15.20	0.04	21.45	25.74	1.35	1.24	
121.40	15.25	0.05	20.83	25.11	1.32	1.24	
139.80	15.32	0.05	20.05	24.27	1.27	1.24	
151.70	15.36	0.07	19.66	23.77	1.22	1.25	
169.70	15.47	0.07	19.22	23.12	1.15	1.25	
182.10	15.55	0.08	18.98	22.71	1.13	1.25	
200.00	15.63	0.09	18.71	22.10	1.17	1.24	

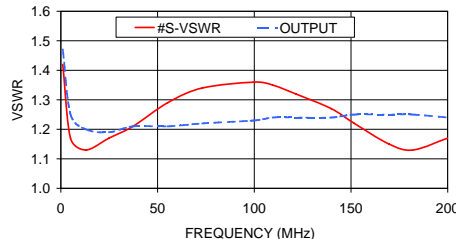
ZFSC-24-11 INSERTION LOSS



ZFSC-24-11 ISOLATION



ZFSC-24-11 VSWR



electrical schematic



For detailed performance specs & shopping online see web site

P.O. Box 350166, Brooklyn, New York 11235-0003 (718) 934-4500 Fax (718) 332-4661 The Design Engineers Search Engine Provides ACTUAL Data Instantly at minicircuits.com

Notes: 1. Performance and quality attributes and conditions not expressly stated in this specification sheet are intended to be excluded and do not form a part of this specification sheet. 2. Electrical specifications and performance data contained herein are based on Mini-Circuit's applicable established test performance criteria and measurement instructions. 3. The parts covered by this specification sheet are subject to Mini-Circuits standard limited warranty and terms and conditions (collectively, "Standard Terms"); Purchasers of this part are entitled to the rights and benefits contained therein. For a full statement of the Standard Terms and the exclusive rights and remedies thereunder, please visit Mini-Circuits' website at www.minicircuits.com/MCLStore/terms.jsp.

REV. OR
M95084
ZFSC-24-11
HY/TD/CP
090827