

Coaxial Power Splitter/Combiner

ZFSC-24-11-75

24 Way-0° 75Ω 1 to 200 MHz

Maximum Ratings

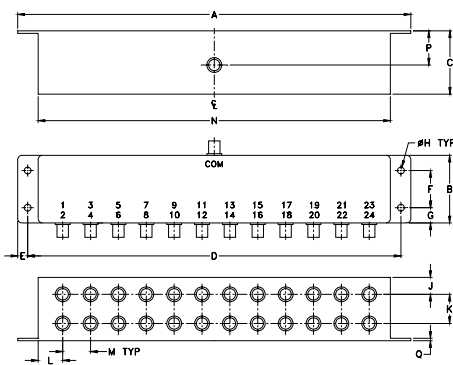
Operating Temperature	-55°C to 100°C
Storage Temperature	-55°C to 100°C
Power Input (as a splitter)	1W max.
Internal Dissipation	0.87W max.

Permanent damage may occur if any of these limits are exceeded.

Coaxial Connections

SUM PORT	S (COM)
PORT 1,2,3,4,.....,24	1,2,3,4,.....,24

Outline Drawing



Outline Dimensions (inch/mm)

A	B	C	D	E	F	G	H
9.31	1.60	1.50	8.84	.24	.88	.36	.160
236.47	40.64	38.10	224.54	6.10	22.35	9.14	4.06
J	K	L	M	N	P	Q	wt.
.40	.69	.54	.66	8.34	.81	.06	grams
10.16	17.53	13.72	16.76	211.84	20.57	1.52	490.0

Features

- high isolation, 33 dB typ.
- low insertion loss, 0.8 dB typ.

Applications

- HF/VHF
- instrumentation
- test set-ups



BNC version shown

CASE STYLE: R31

Connectors	Model	Price	Qty.
BNC	ZFSC-24-11-75	\$274.95	(1-9)

Electrical Specifications

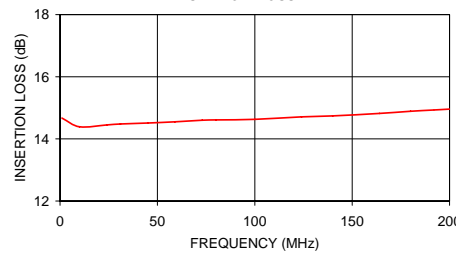
FREQ. RANGE (MHz)	ISOLATION (dB)						INSERTION LOSS (dB) ABOVE 13.8 dB						AMPLITUDE UNBALANCE (dB)		
	L		M		U		L		M		U		L	M	U
	Typ.	Min.	Typ.	Min.	Typ.	Typ.	Typ.	Max.	Typ.	Max.	Typ.	Max.	Max.	Max.	Max.
1-200	35	25	33	20	27	20	0.6	1.3	0.8	1.5	1.1	2.0	0.6	0.4	0.6

L = low range [f_L to 10 f_L] M = mid range [10 f_L to $f_U/2$] U = upper range [$f_U/2$ to f_U]

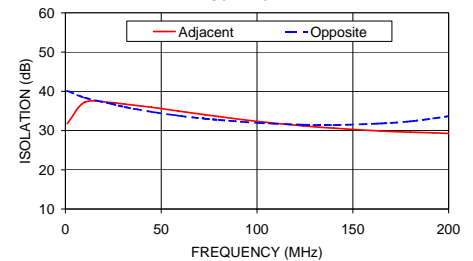
Typical Performance Data

Freq. (MHz)	Insertion Loss (dB)	Amplitude Unbalance (dB)	Isolation (dB)		Phase Unbalance (deg.)	VSWR S	VSWR OUTPUT
			Adjacent	Opposite			
			S-1				
1.00	14.67	0.30	31.76	40.16	1.39	1.25	1.15
10.00	14.39	0.20	37.20	38.39	1.14	1.06	1.08
24.00	14.45	0.16	37.13	36.83	2.04	1.13	1.08
31.00	14.48	0.15	36.74	36.01	2.51	1.16	1.08
45.00	14.51	0.16	35.93	34.79	3.27	1.21	1.09
59.00	14.55	0.17	34.96	33.80	3.95	1.24	1.10
73.00	14.60	0.17	34.02	33.01	4.66	1.24	1.11
80.00	14.61	0.17	33.57	32.73	5.16	1.24	1.12
100.00	14.63	0.17	32.35	31.97	6.23	1.22	1.14
124.00	14.71	0.19	31.21	31.49	7.69	1.17	1.17
140.00	14.74	0.20	30.61	31.42	8.64	1.16	1.20
164.00	14.82	0.22	29.90	31.80	9.96	1.18	1.25
180.00	14.89	0.23	29.58	32.37	10.88	1.23	1.28
192.00	14.93	0.25	29.42	33.10	11.63	1.27	1.31
200.00	14.96	0.26	29.27	33.67	12.12	1.30	1.33

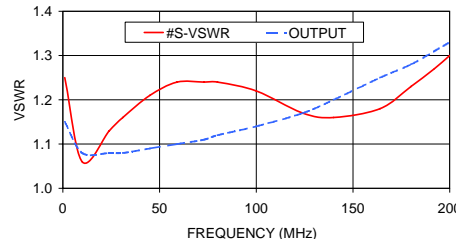
ZFSC-24-11-75 INSERTION LOSS



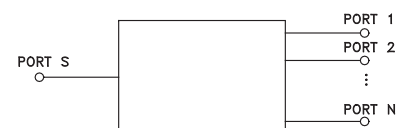
ZFSC-24-11-75 ISOLATION



ZFSC-24-11-75 VSWR



electrical schematic



Mini-Circuits®
 ISO 9001 ISO 14001 AS 9100 CERTIFIED
 The Design Engineers Search Engine Provides ACTUAL Data Instantly at minicircuits.com
 IFIRF MICROWAVE COMPONENTS

For detailed performance specs & shopping online see web site

P.O. Box 350166, Brooklyn, New York 11235-0003 (718) 934-4500 Fax (718) 332-4661 The Design Engineers Search Engine Provides ACTUAL Data Instantly at minicircuits.com

Notes: 1. Performance and quality attributes and conditions not expressly stated in this specification sheet are intended to be excluded and do not form a part of this specification sheet. 2. Electrical specifications and performance data contained herein are based on Mini-Circuit's applicable established test performance criteria and measurement instructions. 3. The parts covered by this specification sheet are subject to Mini-Circuits standard limited warranty and terms and conditions (collectively, "Standard Terms"); Purchasers of this part are entitled to the rights and benefits contained therein. For a full statement of the Standard Terms and the exclusive rights and remedies thereunder, please visit Mini-Circuits' website at www.minicircuits.com/MCLStore/terms.jsp.

REV. OR
 M95084
 ZFSC-24-11-75
 HY/TD/CP
 090827