

Coaxial

Power Splitter/Combiner

ZFSC-2-5+ ZFSC-2-5

2 Way-0° 50Ω 10 to 1500 MHz

Maximum Ratings

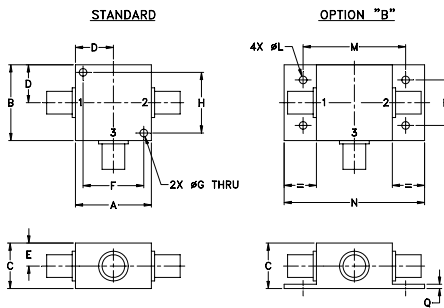
| | |
|-----------------------------|----------------|
| Operating Temperature | -55°C to 100°C |
| Storage Temperature | -55°C to 100°C |
| Power Input (as a splitter) | 1W max. |
| Internal Dissipation | 0.125W max. |

Permanent damage may occur if any of these limits are exceeded.

Coaxial Connections

| | |
|----------|---|
| SUM PORT | 3 |
| PORT 1 | 1 |
| PORT 2 | 2 |

Outline Drawing



Outline Dimensions (inch/mm)

| A | B | C | D | E | F | G | H |
|-------|-------|-------|-------|------|-------|------|-------|
| 1.25 | 1.25 | .75 | .63 | .38 | 1.00 | .125 | 1.000 |
| 31.75 | 31.75 | 19.05 | 16.00 | 9.65 | 25.40 | 3.18 | 25.40 |

| J | K | L | M | N | P | Q | wt |
|----|----|------|-------|-------|-------|------|-------|
| -- | -- | .125 | 1.688 | 2.18 | .75 | .07 | grams |
| -- | -- | 3.18 | 42.88 | 55.37 | 19.05 | 1.78 | 70.0 |

For option B with N-type connectors, dimension "C" increases to 0.94 inches.

Features

- wideband, 10 to 1500 MHz
- high insertion loss, 0.5 dB typ.
- high isolation, 30 dB typ.
- excellent amplitude unbalance, 0.1 dB typ.
- excellent phase unbalance, 0.5 deg. typ.
- rugged shielded case

Applications

- cellular
- satellite distribution
- VHF/UHF



BNC version shown
CASE STYLE: K18

| Connectors | Model | Price | Qty. |
|----------------------|---------------|---------|-------|
| BNC | ZFSC-2-5(+) | \$59.95 | (1-9) |
| SMA | ZFSC-2-5-S(+) | \$64.95 | (1-9) |
| N-TYPE | ZFSC-2-5-N(+) | \$64.95 | (1-9) |
| BRACKET (OPTION "B") | | \$2.50 | (1+) |

+ RoHS compliant in accordance with EU Directive (2002/95/EC)

The +Suffix identifies RoHS Compliance. See our web site for RoHS Compliance methodologies and qualifications.

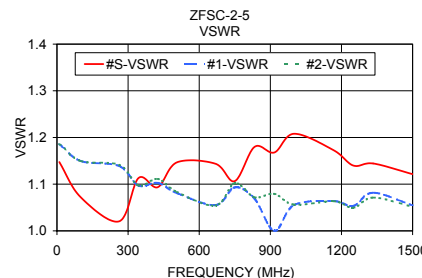
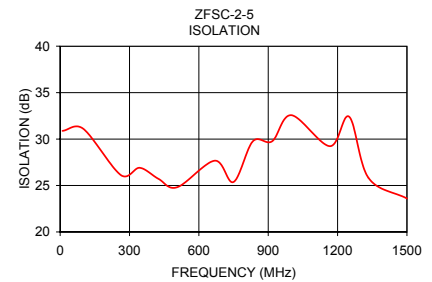
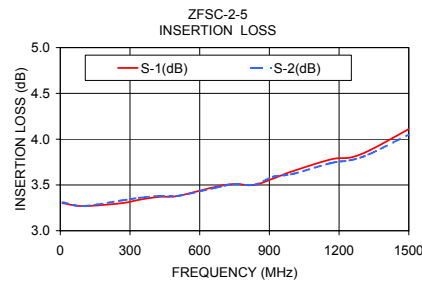
Electrical Specifications

| FREQ. RANGE (MHz) | ISOLATION (dB) | | | INSERTION LOSS (dB) ABOVE 3.0 dB | | | PHASE UNBALANCE (Degrees) | | | AMPLITUDE UNBALANCE (dB) | | | | | | | | |
|-------------------|----------------|----|----|----------------------------------|----|----|---------------------------|-----|-----|--------------------------|-----|-----|---|---|---|------|------|------|
| | L | M | U | L | M | U | L | M | U | L | M | U | | | | | | |
| 10-1500 | 25 | 15 | 30 | 20 | 25 | 18 | 0.25 | 0.6 | 0.5 | 1.0 | 0.8 | 1.5 | 2 | 3 | 4 | 0.15 | 0.20 | 0.50 |

L = low range [f_L to 10 f_L] M = mid range [10 f_L to $f_U/2$] U = upper range [$f_U/2$ to f_U]

Typical Performance Data

| Frequency (MHz) | Insertion Loss (dB) | | Amplitude Unbalance (dB) | Isolation (dB) | Phase Unbalance (deg.) | VSWR S | VSWR 1 | VSWR 2 |
|-----------------|---------------------|------|--------------------------|----------------|------------------------|--------|--------|--------|
| | S-1 | S-2 | | | | | | |
| 10.00 | 3.30 | 3.31 | 0.01 | 30.88 | 0.08 | 1.15 | 1.19 | 1.19 |
| 100.00 | 3.27 | 3.27 | 0.00 | 31.11 | 0.07 | 1.07 | 1.15 | 1.15 |
| 262.50 | 3.30 | 3.33 | 0.03 | 26.12 | 0.05 | 1.02 | 1.14 | 1.14 |
| 343.75 | 3.34 | 3.36 | 0.02 | 26.91 | 0.18 | 1.11 | 1.10 | 1.10 |
| 425.00 | 3.37 | 3.38 | 0.02 | 25.72 | 0.06 | 1.09 | 1.10 | 1.11 |
| 506.25 | 3.38 | 3.38 | 0.00 | 24.81 | 0.01 | 1.15 | 1.08 | 1.08 |
| 668.75 | 3.48 | 3.47 | 0.01 | 27.67 | 0.14 | 1.14 | 1.06 | 1.05 |
| 750.00 | 3.51 | 3.51 | 0.00 | 25.38 | 0.08 | 1.11 | 1.09 | 1.10 |
| 833.33 | 3.50 | 3.50 | 0.00 | 29.75 | 0.03 | 1.18 | 1.07 | 1.07 |
| 916.66 | 3.57 | 3.59 | 0.02 | 29.76 | 0.38 | 1.17 | 1.00 | 1.08 |
| 1000.00 | 3.65 | 3.62 | 0.03 | 32.57 | 0.30 | 1.21 | 1.06 | 1.06 |
| 1166.66 | 3.78 | 3.74 | 0.04 | 29.23 | 0.16 | 1.17 | 1.06 | 1.06 |
| 1250.00 | 3.80 | 3.77 | 0.04 | 32.41 | 0.32 | 1.14 | 1.05 | 1.05 |
| 1333.33 | 3.88 | 3.84 | 0.03 | 25.84 | 0.42 | 1.14 | 1.08 | 1.07 |
| 1500.00 | 4.11 | 4.05 | 0.06 | 23.60 | 0.32 | 1.12 | 1.05 | 1.05 |



electrical schematic



For detailed performance specs & shopping online see web site

Mini-Circuits®
ISO 9001 ISO 14001 AS 9100 CERTIFIED

P.O. Box 350166, Brooklyn, New York 11235-0003 (718) 934-4500 Fax (718) 332-4661 The Design Engineers Search Engine Provides ACTUAL Data Instantly at minicircuits.com

IFIRF MICROWAVE COMPONENTS

Notes: 1. Performance and quality attributes and conditions not expressly stated in this specification sheet are intended to be excluded and do not form a part of this specification sheet. 2. Electrical specifications and performance data contained herein are based on Mini-Circuit's applicable established test performance criteria and measurement instructions. 3. The parts covered by this specification sheet are subject to Mini-Circuits standard limited warranty and terms and conditions (collectively, "Standard Terms"); Purchasers of this part are entitled to the rights and benefits contained therein. For a full statement of the Standard Terms and the exclusive rights and remedies thereunder, please visit Mini-Circuits' website at www.minicircuits.com/MCLStore/terms.jsp.

REV. B
M127007
ZFSC-2-5
HY/TD/CP/AM
100407