

Coaxial

Power Splitter/Combiner

ZFSC-2-1W-75+

2 Way-0° 75Ω 5 to 600 MHz



Maximum Ratings

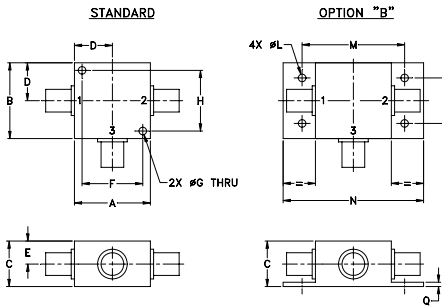
Operating Temperature	-55°C to 100°C
Storage Temperature	-55°C to 100°C
Power Input (as a splitter)	1W max.
Internal Dissipation	0.125W max.

Permanent damage may occur if any of these limits are exceeded.

Coaxial Connections

SUM PORT	3
PORT 1	1
PORT 2	2

Outline Drawing



Outline Dimensions (inch/mm)

A	B	C	D	E	F	G	H		
1.25	1.25	.75	.63	.38	1.00	.125	1.000		
31.75	31.75	19.05	16.00	9.65	25.40	3.18	25.40		
J	K	L	M	N	P	Q	wt		
--	--	.125	1.688	2.18	.75	.07	grams		
--	--	3.18	42.88	55.37	19.05	1.78	70.0		

Features

- wideband, 5 to 600 MHz
- low insertion loss, 0.27 dB typ.
- very high isolation, 45 dB typ.
- excellent amplitude unbalance, 0.1 dB typ.
- excellent phase unbalance, 0.2 deg. typ.
- good VSWR, 1.15:1 typ.
- rugged shielded case

Applications

- VHF/UHF
- catv
- instrumentation

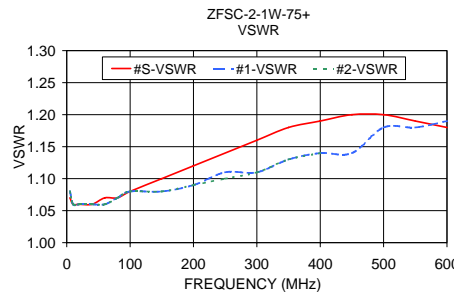
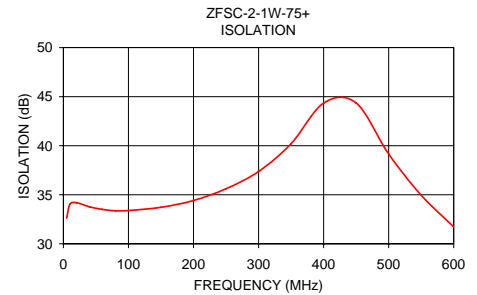
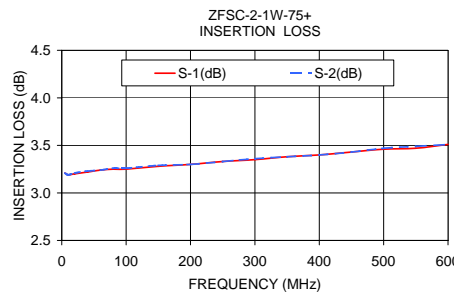
Electrical Specifications

FREQ. RANGE (MHz)	ISOLATION (dB)			INSERTION LOSS (dB) ABOVE 3.0 dB			PHASE UNBALANCE (Degrees)			AMPLITUDE UNBALANCE (dB)				
	L	M	U	L	M	U	L	M	U	L	M	U		
f _L -f _U	Typ.	Min.	Typ. Min.	Typ. Max.	Typ. Max.	Typ. Max.	Max.	Max.	Max.	Max.	Max.	Max.		
5-600	44	26	45 30	31	20	0.22 0.6	0.27 0.7	0.46 0.9	1	2	3	0.2	0.3	0.4

L = low range [f_L to 10 f_L] M = mid range [10 f_L to f_U/2] U = upper range [f_U/2 to f_U]

Typical Performance Data

Frequency (MHz)	Insertion Loss (dB)		Amplitude Unbalance (dB)	Isolation (dB)	Phase Unbalance (deg.)	VSWR S	VSWR 1	VSWR 2
	S-1	S-2						
5	3.21	3.21	0.01	32.62	0.03	1.07	1.08	1.08
10	3.19	3.19	0.00	34.02	0.03	1.06	1.06	1.06
20	3.20	3.21	0.01	34.19	0.02	1.06	1.06	1.06
60	3.24	3.24	0.00	33.51	0.03	1.07	1.06	1.06
100	3.25	3.26	0.01	33.39	0.03	1.08	1.08	1.08
150	3.28	3.29	0.01	33.72	0.05	1.10	1.08	1.08
200	3.30	3.30	0.01	34.41	0.04	1.12	1.09	1.09
250	3.33	3.33	0.01	35.61	0.06	1.14	1.11	1.10
300	3.35	3.36	0.02	37.37	0.07	1.16	1.11	1.11
350	3.38	3.38	0.02	40.20	0.09	1.18	1.13	1.13
400	3.40	3.40	0.02	44.35	0.11	1.19	1.14	1.14
450	3.43	3.43	0.03	44.36	0.13	1.20	1.14	1.16
500	3.46	3.47	0.05	39.15	0.15	1.20	1.18	1.17
550	3.47	3.49	0.06	34.96	0.14	1.19	1.18	1.18
600	3.51	3.51	0.06	31.73	0.19	1.18	1.19	1.20



electrical schematic



For detailed performance specs & shopping online see web site

P.O. Box 350166, Brooklyn, New York 11235-0003 (718) 934-4500 Fax (718) 332-4661 The Design Engineers Search Engine Provides ACTUAL Data Instantly at minicircuits.com

Notes: 1. Performance and quality attributes and conditions not expressly stated in this specification sheet are intended to be excluded and do not form a part of this specification sheet. 2. Electrical specifications and performance data contained herein are based on Mini-Circuit's applicable established test performance criteria and measurement instructions. 3. The parts covered by this specification sheet are subject to Mini-Circuits standard limited warranty and terms and conditions (collectively, "Standard Terms"); Purchasers of this part are entitled to the rights and benefits contained therein. For a full statement of the Standard Terms and the exclusive rights and remedies thereunder, please visit Mini-Circuits' website at www.minicircuits.com/MCLStore/terms.jsp.

REV. A
M108294
ZFSC-2-1W-75+
HY/TD/CP
090824