

Coaxial Power Splitter/Combiner

ZFSC-16-675

16 Way-0° 75Ω 0.01 to 25 MHz

Maximum Ratings

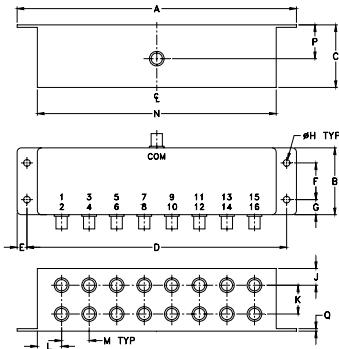
Operating Temperature	-55°C to 100°C
Storage Temperature	-55°C to 100°C
Power Input (as a splitter)	1W max.
Internal Dissipation	0.87W max.

Permanent damage may occur if any of these limits are exceeded.

Coaxial Connections

SUM PORT	S(COM)
PORT 1,2,3,.....,16	1,2,3,.....,16

Outline Drawing



Outline Dimensions (inch/mm)

A	B	C	D	E	F	G	H
6.69	1.60	1.50	6.22	.24	.88	.36	.160
169.93	40.64	38.10	157.99	6.10	22.35	9.14	4.06
J	K	L	M	N	P	Q	wt.
.40	.69	.55	.66	5.72	.81	.06	grams
10.16	17.53	13.97	16.76	145.29	20.57	1.52	320

Features

- low insertion loss, 0.4 dB typ.
- high isolation, 40 dB typ.
- rugged shielded case

Applications

- HF
- communication systems
- instrumentation



CASE STYLE: R30

Connectors	Model	Price	Qty.
BNC	ZFSC-16-675	\$189.95	(1-9)

Electrical Specifications

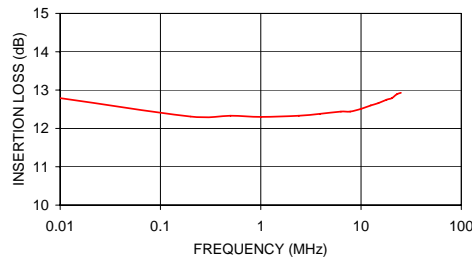
FREQ. RANGE (MHz)	ISOLATION (dB)						INSERTION LOSS (dB) ABOVE 12 dB						PHASE UNBALANCE (Degrees)			AMPLITUDE UNBALANCE (dB)		
	L		M		U		L		M		U		L	M	U	L	M	U
f_L - f_U	Typ.	Min.	Typ.	Min.	Typ.	Min.	Typ.	Max.	Typ.	Max.	Typ.	Max.	Max.	Max.	Max.	Max.	Max.	Max.
0.01-25	25	20	40	25	25	20	0.8	1.1	0.4	0.8	1.0	1.6	4	3	5	0.4	0.2	0.4

L = low range [f_L to $10 f_L$] M = mid range [$10 f_L$ to $f_U/2$] U = upper range [$f_U/2$ to f_U]

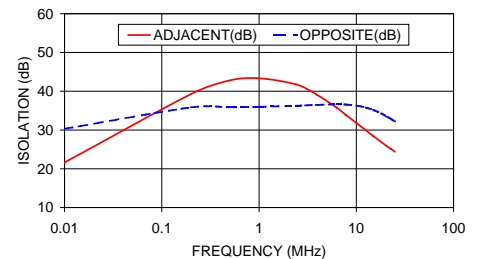
Typical Performance Data

Freq. (MHz)	Insertion Loss (dB)	Amplitude Unbalance (dB)	Isolation (dB)		VSWR S	VSWR OUTPUT
			Adjacent	Opposite		
	S-1					
0.01	12.79	0.07	21.62	30.34	1.62	1.75
0.20	12.31	0.01	39.28	35.84	1.29	1.10
0.50	12.33	0.01	42.79	35.88	1.29	1.09
1.00	12.30	0.00	43.35	35.99	1.30	1.08
2.40	12.33	0.01	41.78	36.27	1.30	1.08
3.90	12.38	0.01	39.15	36.49	1.31	1.08
6.30	12.44	0.00	35.74	36.66	1.35	1.09
7.80	12.44	0.00	33.90	36.57	1.35	1.10
10.00	12.51	0.01	31.84	36.32	1.37	1.11
12.50	12.60	0.00	29.95	35.81	1.41	1.14
14.90	12.66	0.02	28.49	35.22	1.43	1.16
18.00	12.75	0.01	26.93	34.29	1.47	1.19
20.30	12.79	0.02	25.96	33.58	1.48	1.20
22.70	12.89	0.02	25.13	32.88	1.50	1.22
25.00	12.93	0.03	24.38	32.18	1.51	1.24

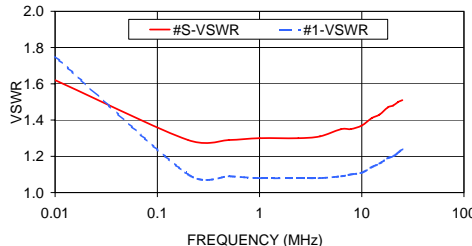
ZFSC-16-675 INSERTION LOSS



ZFSC-16-675 ISOLATION



ZFSC-16-675 VSWR



electrical schematic



For detailed performance specs & shopping online see web site

P.O. Box 350166, Brooklyn, New York 11235-0003 (718) 934-4500 Fax (718) 332-4661 The Design Engineers Search Engine Provides ACTUAL Data Instantly at minicircuits.com

Notes: 1. Performance and quality attributes and conditions not expressly stated in this specification sheet are intended to be excluded and do not form a part of this specification sheet. 2. Electrical specifications and performance data contained herein are based on Mini-Circuit's applicable established test performance criteria and measurement instructions. 3. The parts covered by this specification sheet are subject to Mini-Circuits standard limited warranty and terms and conditions (collectively, "Standard Terms"); Purchasers of this part are entitled to the rights and benefits contained therein. For a full statement of the Standard Terms and the exclusive rights and remedies thereunder, please visit Mini-Circuits' website at www.minicircuits.com/MCLStore/terms.jsp.

REV. OR
M95654
ZFSC-16-675
HY/TD/CP
090827