

Coaxial

Power Splitter/Combiner

ZFRSC-183+

2 Way-0° Resistive 50Ω DC to 18000 MHz



Maximum Ratings

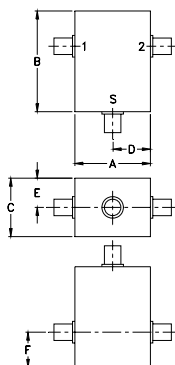
Operating Temperature	-55°C to 100°C
Storage Temperature	-55°C to 100°C
Power Input (as a splitter)	0.16W max.
Internal Dissipation	0.08W max.

Permanent damage may occur if any of these limits are exceeded.

Coaxial Connections

SUM PORT	S
PORT 1	1
PORT 2	2

Outline Drawing



Outline Dimensions (inch/mm)

A	B	C	D	E	F	wt
.75	1.00	.58	.38	.29	.35	grams
19.05	25.40	14.73	9.65	7.37	8.89	22.0

Features

- very wideband, DC to 18000 MHz
- very good phase unbalance, 1 deg. typ.
- excellent amplitude unbalance, 0.1 dB typ.
- rugged shielded case

Applications

- laboratory
- test set-ups

CASE STYLE: JJJ245			
Connectors	Model	Price	Qty.
SMA	ZFRSC-183-S+	\$79.95 ea.	(1-9)

+ RoHS compliant in accordance with EU Directive (2002/95/EC)

The +Suffix has been added in order to identify RoHS Compliance. See our web site for RoHS Compliance methodologies and qualifications.

Electrical Specifications T_{AMB} = 25°C

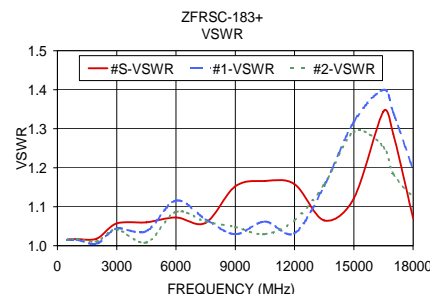
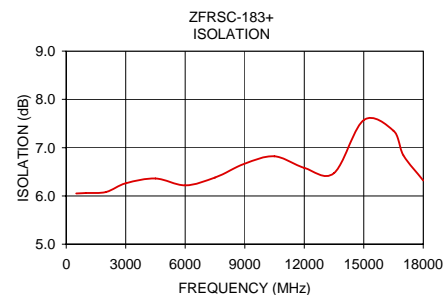
FREQ. RANGE (MHz)	ISOLATION (dB)			INSERTION LOSS (dB) ABOVE 6.0 dB			PHASE UNBALANCE (Degrees)			AMPLITUDE UNBALANCE (dB)		
	L	M	U	L	M	U	L	M	U	L	M	U
f _L -f _U	Typ.	Typ.	Typ.	Typ. Max.	Typ. Max.	Typ. Max.	Max.	Max.	Max.	Max.	Max.	Max.
DC-18000	6.2	6.5	7.0	0.3	0.7	1.0	4	7	10	0.2	0.5	0.5

L = DC-6000 MHz M = 6000-12000 MHz U = 12000-18000 MHz

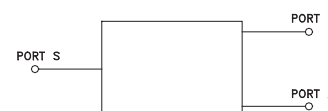
This is a resistive power divider to enable frequency coverage from dc to the highest rated frequency. Since resistive power divider do not provide a high degree of isolation (basically isolation equals the insertion loss between ports), an amplifier such as Mini-Circuits' ZVA series is recommended when high isolation is required. Matched power rating 0.16W, internal load dissipation 0.08W.

Typical Performance Data

Frequency (MHz)	Insertion Loss (dB)		Amplitude Unbalance (dB)	Isolation (dB)	Phase Unbalance (deg.)	VSWR S	VSWR 1	VSWR 2
	S-1	S-2						
500.00	6.05	6.07	0.01	6.05	0.01	1.02	1.01	1.01
1000.00	6.07	6.08	0.02	6.06	0.08	1.02	1.02	1.02
2000.00	6.09	6.13	0.04	6.08	0.26	1.02	1.01	1.01
3000.00	6.19	6.22	0.02	6.26	0.28	1.06	1.04	1.04
4500.00	6.27	6.34	0.07	6.36	0.05	1.06	1.04	1.01
6000.00	6.30	6.36	0.07	6.22	0.01	1.07	1.12	1.09
7500.00	6.37	6.39	0.03	6.38	0.08	1.06	1.07	1.06
9000.00	6.34	6.44	0.10	6.67	0.22	1.15	1.03	1.05
10500.00	6.51	6.62	0.11	6.82	0.10	1.17	1.06	1.03
12000.00	6.76	6.82	0.05	6.58	0.91	1.16	1.03	1.06
13500.00	6.82	6.87	0.05	6.47	0.18	1.06	1.15	1.16
15000.00	7.37	7.32	0.05	7.57	0.01	1.12	1.32	1.29
16500.00	7.25	7.04	0.21	7.35	0.78	1.34	1.40	1.25
17000.00	6.79	6.59	0.19	6.84	0.59	1.29	1.34	1.18
18000.00	6.07	5.91	0.15	6.32	0.57	1.07	1.19	1.13



electrical schematic



Mini-Circuits®
 ISO 9001 ISO 14001 AS 9100 CERTIFIED
 IFIRF MICROWAVE COMPONENTS

For detailed performance specs & shopping online see web site

P.O. Box 350166, Brooklyn, New York 11235-0003 (718) 934-4500 Fax (718) 332-4661 The Design Engineers Search Engine Provides ACTUAL Data Instantly at minicircuits.com

Notes: 1. Performance and quality attributes and conditions not expressly stated in this specification sheet are intended to be excluded and do not form a part of this specification sheet. 2. Electrical specifications and performance data contained herein are based on Mini-Circuit's applicable established test performance criteria and measurement instructions. 3. The parts covered by this specification sheet are subject to Mini-Circuits standard limited warranty and terms and conditions (collectively, "Standard Terms"); Purchasers of this part are entitled to the rights and benefits contained therein. For a full statement of the Standard Terms and the exclusive rights and remedies thereunder, please visit Mini-Circuits' website at www.minicircuits.com/MCLStore/terms.jsp.

REV. OR
 M114807
 ZFRSC-183+
 ED-13066/3
 AD/CP
 090824