

Coaxial High Pass Filter

ZFHP-0R12+

50Ω 0.12 to 1000 MHz

The Big Deal

- Low insertion loss
- High rejection
- Connectorized package



CASE STYLE: H16

Product Overview

ZFHP-0R12+ is a High pass filter in a connectorized package. This low frequency cut-off high pass filter eliminates noise that feed into RF / base band circuits from low frequency sources.

Key Features

Feature	Advantages
Low insertion loss	Can be used in high performance applications.
Excellent low frequency rejection	Filters out low frequency noise from sources such as electric motors and generators. SMDS noise filtering and IF noise filtering.
Connectorized package	The connectorized package is easy to interface with other devices and well suited for test setups.



For detailed performance specs & shopping online see web site

P.O. Box 350166, Brooklyn, New York 11235-0003 (718) 934-4500 Fax (718) 332-4661 The Design Engineers Search Engine  Provides ACTUAL Data Instantly at minicircuits.com

Notes: 1. Performance and quality attributes and conditions not expressly stated in this specification sheet are intended to be excluded and do not form a part of this specification sheet. 2. Electrical specifications and performance data contained herein are based on Mini-Circuit's applicable established test performance criteria and measurement instructions. 3. The parts covered by this specification sheet are subject to Mini-Circuits standard limited warranty and terms and conditions (collectively, "Standard Terms"); Purchasers of this part are entitled to the rights and benefits contained therein. For a full statement of the Standard Terms and the exclusive rights and remedies thereunder, please visit Mini-Circuits' website at www.minicircuits.com/MCLStore/terms.jsp.

Coaxial High Pass Filter

ZFHP-0R12+

50Ω 0.12 to 1000 MHz



CASE STYLE: H16

Features

- Wide band, 0.12 MHz to 1000 MHz
- High rejection
- Connectorized package

Connectors	Model	Price	Qty.
SMA-FEMALE	ZFHP-0R12-S+	\$39.95 ea.	(1-9)
BRACKET (OPTION "B")		\$5.00 ea.	(1+)

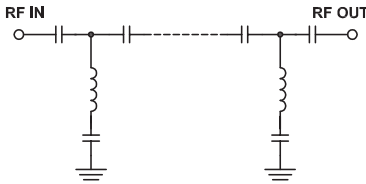
Electrical Specifications at 25°C

Parameter	F#	Frequency (MHz)	Min.	Typ.	Max.	Unit	
Stop Band	Rejection Loss	DC-F1	DC-0.050	25	40	-	dB
	VSWR	DC-F1	DC-0.050	-	54	-	:1
Pass Band	Insertion Loss	F2-F3	0.12-1000	-	1.4	2.2	dB
	VSWR	F2-F3	0.12-1000	-	1.5	-	:1

Applications

- Wire-line broad band access
- Fiber optic networks
- Receivers \ transmitters
- Radio navigation
- Fixed maritime mobile
- Electrical equipment noise elimination

Functional Schematic



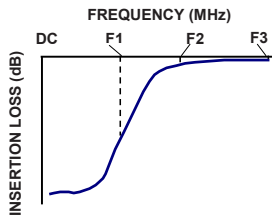
Maximum Ratings	
Operating Temperature	-40°C to 85°C
Storage Temperature	-55°C to 100°C
RF Power Input	+5 dBm max.

Permanent damage may occur if any of these limits are exceeded.

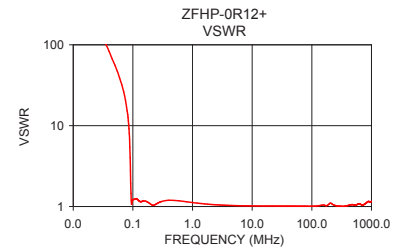
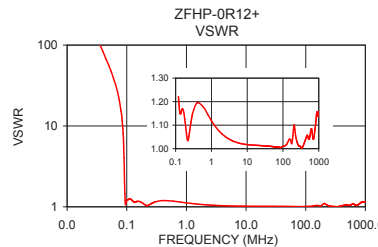
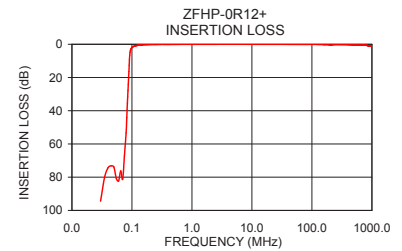
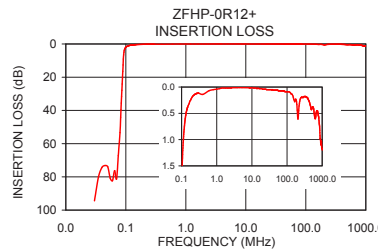
Typical Performance Data at 25°C

Frequency (MHz)	Insertion Loss (dB)	VSWR (:1)
0.030	94.42	124.09
0.050	73.93	56.04
0.082	44.09	13.70
0.085	31.66	10.37
0.087	24.11	8.01
0.090	12.63	4.02
0.092	6.54	1.92
0.096	2.96	1.09
0.100	2.00	1.22
0.120	0.75	1.22
0.600	0.07	1.18
1.000	0.04	1.12
10.000	0.01	1.02
50.000	0.06	1.01
100.000	0.09	1.01
250.000	0.20	1.03
500.000	0.42	1.05
800.000	0.58	1.09
900.000	1.01	1.16
1000.000	1.20	1.16

Typical Frequency Response



+RoHS Compliant
The +Suffix identifies RoHS Compliance. See our web site for RoHS Compliance methodologies and qualifications



Mini-Circuits®
ISO 9001 ISO 14001 AS 9100 CERTIFIED
IF/RF MICROWAVE COMPONENTS

For detailed performance specs & shopping online see web site

P.O. Box 350166, Brooklyn, New York 11235-0003 (718) 934-4500 Fax (718) 332-4661 The Design Engineers Search Engine [minicircuits.com](http://www.minicircuits.com) Provides ACTUAL Data Instantly at [minicircuits.com](http://www.minicircuits.com)

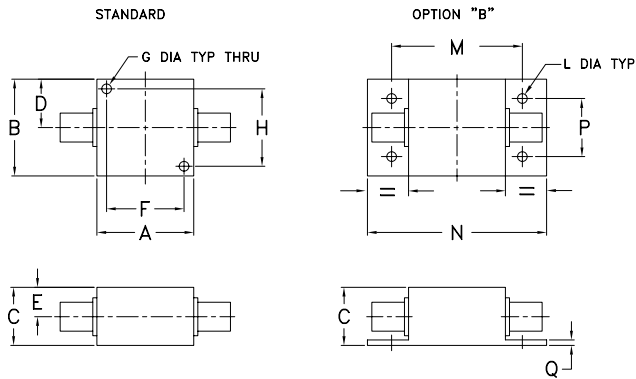
Notes: 1. Performance and quality attributes and conditions not expressly stated in this specification sheet are intended to be excluded and do not form a part of this specification sheet. 2. Electrical specifications and performance data contained herein are based on Mini-Circuit's applicable established test performance criteria and measurement instructions. 3. The parts covered by this specification sheet are subject to Mini-Circuits standard limited warranty and terms and conditions (collectively, "Standard Terms"); Purchasers of this part are entitled to the rights and benefits contained therein. For a full statement of the Standard Terms and the exclusive rights and remedies thereunder, please visit Mini-Circuits' website at www.minicircuits.com/MCLStore/terms.jsp.

REV OR
M135803
ZFHP-0R12+
EDU1020
URJ
130201
Page 2 of 3

Coaxial Connections

INPUT	SMA-Female
OUTPUT	SMA-Female

Outline Drawing



Outline Dimensions ($\frac{\text{inch}}{\text{mm}}$)

A	B	C	D	E	F	G	H
.25	1.25	.75	.63	.38	1.000	.125	1.000
.75	31.75	19.05	16.00	9.65	25.40	3.18	25.40
J	K	L	M	N	P	Q	wt
--	--	.125	1.688	2.18	.750	.06	grams
--	--	3.18	42.88	55.37	19.05	1.52	70.0