

High Pass Filter

ZFHP-0R055+

50Ω 0.07 to 1000 MHz

Maximum Ratings

Operating Temperature	-40°C to 85°C
Storage Temperature	-55°C to 100°C
RF Power Input	1W at 25°C

Permanent damage may occur if any of these limits are exceeded.

Features

- Wideband, 0.07 MHz to 1000 MHz
- Good VSWR, 1.1:1 Typ @ Passband
- High Rejection
- Rugged shielded case

Applications

- Wire-Line Broadband Access
- Fiber Optics Network
- Receivers / Transmitters
- Lab Use
- Test Equipment



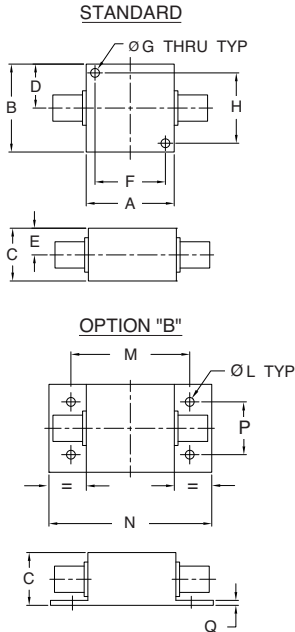
CASE STYLE: H16

Connectors	Model	Price	Qty.
SMA-FEMALE	ZFHP-0R055-S+	\$39.95 ea.	(1-9)
BRACKET (OPTION "B")	ZFHP-0R055B-S+	\$42.45 ea.	(1-9)

+ RoHS compliant in accordance with EU Directive (2002/95/EC)

The +Suffix has been added in order to identify RoHS Compliance. See our web site for RoHS Compliance methodologies and qualifications.

Outline Drawing



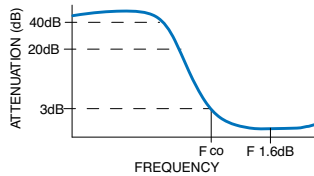
Outline Dimensions (inch/mm)

A	B	C	D	E	F	G	H
1.25	1.25	.75	.63	.38	1.000	.125	1.000
31.75	31.75	19.05	16.00	9.65	25.40	3.18	25.40
J	K	L	M	N	P	Q	wt.
--	--	.125	1.688	2.18	.75	.07	grams
--	--	3.18	42.88	55.37	19.05	1.78	70

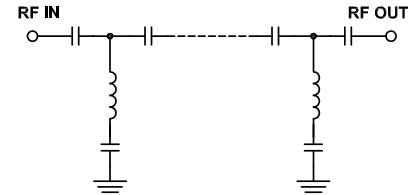
High Pass Filter Electrical Specifications (T_{AMB} = 25°C)

STOPBAND (MHz)		f _{co} , MHz Nom.	PASSBAND (MHz)	VSWR (:1)	
(Loss > 40dB)	(Loss > 20dB)	(Loss 3dB)	(Loss < 1.6dB)	Stopband Typ.	Passband Typ.
DC - 0.04	DC - 0.044	0.055	0.07 - 1000	20	1.1

Typical Frequency Response

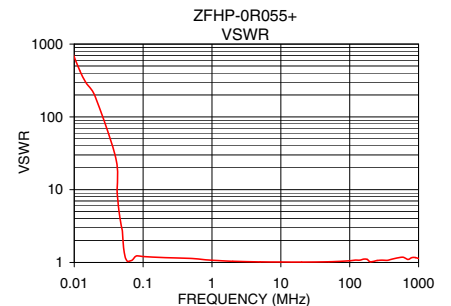
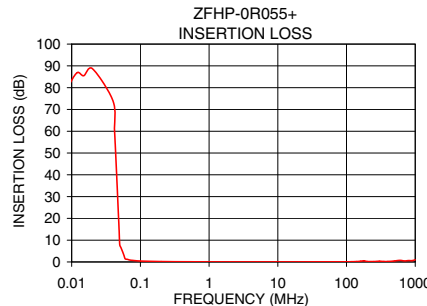


Functional Schematic



Typical Performance Data at 25°C

Frequency (MHz)	Insertion Loss (dB)	VSWR (:1)
0.009	80.97	868.59
0.015	85.48	289.53
0.020	88.75	193.02
0.040	73.86	27.59
0.044	47.51	5.74
0.048	21.16	3.26
0.049	14.57	2.96
0.050	7.99	2.72
0.055	4.73	1.19
0.058	2.77	1.06
0.060	1.47	1.03
0.070	0.87	1.08
0.100	0.43	1.21
1.000	0.04	1.07
10.000	0.02	1.01
100.000	0.07	1.06
200.000	0.20	1.02
500.000	0.46	1.16
1000.000	0.96	1.13



For detailed performance specs & shopping online see web site

P.O. Box 350166, Brooklyn, New York 11235-0003 (718) 934-4500 Fax (718) 332-4661 The Design Engineers Search Engine Provides ACTUAL Data Instantly at minicircuits.com

Notes: 1. Performance and quality attributes and conditions not expressly stated in this specification sheet are intended to be excluded and do not form a part of this specification sheet. 2. Electrical specifications and performance data contained herein are based on Mini-Circuits' applicable established test performance criteria and measurement instructions. 3. The parts covered by this specification sheet are subject to Mini-Circuits' standard limited warranty and terms and conditions (collectively, "Standard Terms"); Purchasers of this part are entitled to the rights and benefits contained therein. For a full statement of the Standard Terms and the exclusive rights and remedies thereunder, please visit Mini-Circuits' website at www.minicircuits.com/MCLStore/terms.jsp.