

# Coaxial Directional Coupler

50Ω

20 to 2000 MHz

ZFDC-20-50+



CASE STYLE: K18

Connectors	Model	Price	Qty.
SMA	ZFDC-20-50-S+	\$64.95	(1-9)
BRACKET (OPTION "B")		\$2.50	(1+)

**+ RoHS compliant in accordance with EU Directive (2002/95/EC)**

The +Suffix has been added in order to identify RoHS Compliance. See our web site for RoHS Compliance methodologies and qualifications.

## Maximum Ratings

Operating Temperature	-55°C to 100°C
Storage Temperature	-55°C to 100°C

Permanent damage may occur if any of these limits are exceeded.

## Coaxial Connections

INPUT	3
OUTPUT	1
COUPLED	2

## Features

- very wideband, 20 to 2000 MHz
- excellent directivity, 25 dB typ.
- excellent mainline loss, 0.7 dB typ.
- rugged shielded case

## Applications

- cellular
- GPS
- instrumentation
- communication receivers & transmitters

## Directional Coupler Electrical Specifications

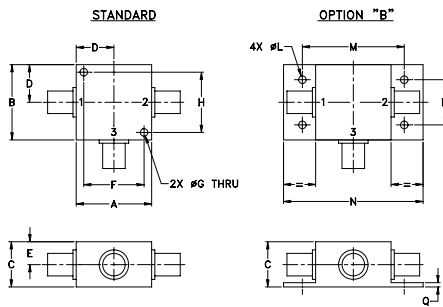
FREQ. RANGE (MHz)	COUPLING* (dB)		MAINLINE LOSS <sup>1</sup> (dB)						DIRECTIVITY (dB)						VSWR (:1)	POWER INPUT (W)		
	Nom.	Flatness	L		M		U		L		M		U			Typ.	L	MU
			Typ.	Max.	Typ.	Max.	Typ.	Max.	Typ.	Min.	Typ.	Min.	Typ.	Min.				
20-2000	19.5±0.5	±0.8	0.8	1.3	0.7	1.3	1.0	1.6	30	20	25	20	22	10	1.25	1.0	1.0	

L = low range [ $f_L$  to  $10 f_L$ ] M = mid range [ $10 f_L$  to  $f_U/2$ ] U = upper range [ $f_U/2$  to  $f_U$ ]

1. Mainline loss includes theoretical power loss at coupled port.

\* Above 1000 MHz, coupling flatness ±1 dB

## Outline Drawing



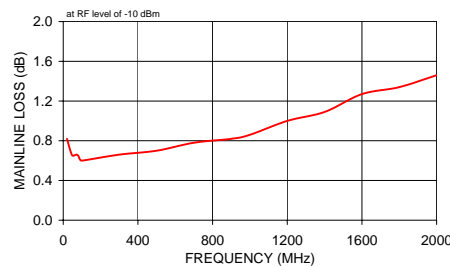
## Outline Dimensions (inch/mm)

A	B	C	D	E	F	G	H
1.25	1.25	.75	.63	.38	1.00	.125	1.000
31.75	31.75	19.05	16.00	9.65	25.40	3.18	25.40
J	K	L	M	N	P	Q	wt
--	--	.125	1.688	2.18	.75	.07	grams
--	--	3.18	42.88	55.37	19.05	1.78	70.0

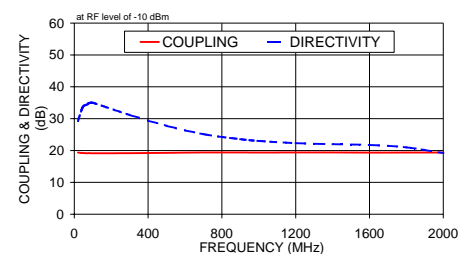
## Typical Performance Data

Frequency (MHz)	Mainline Loss (dB) In-Out	Coupling (dB) In-Cpl	Directivity (dB)	Return Loss (dB)		Cpl
				In	Out	
20.00	0.82	19.36	29.25	17.95	19.33	21.82
50.00	0.65	19.21	33.94	21.29	23.63	24.42
80.00	0.65	19.19	34.88	22.44	25.39	25.30
100.00	0.60	19.14	35.01	22.93	26.11	25.66
300.00	0.66	19.18	31.17	25.70	28.22	28.13
1000.00	0.86	19.37	23.02	24.12	32.91	28.50
1200.00	1.00	19.40	22.32	20.46	32.70	24.27
1400.00	1.09	19.40	21.99	17.71	30.28	21.55
1600.00	1.27	19.35	21.75	15.67	27.28	19.50
1800.00	1.34	19.36	21.00	14.04	24.37	17.79
2000.00	1.46	19.37	19.19	12.70	21.84	16.24

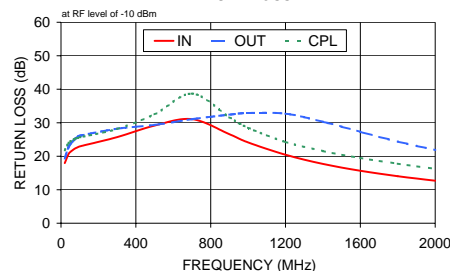
ZFDC-20-50+ MAINLINE LOSS



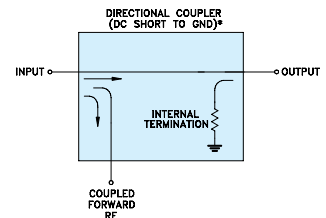
ZFDC-20-50+ COUPLING & DIRECTIVITY



ZFDC-20-50+ RETURN LOSS



## Electrical Schematic



\* ELECTRICAL SCHEMATIC IS FOR DIRECTIONAL COUPLER WITH INTERNAL TRANSFORMERS THAT ROUTES DC FROM RF PORTS TO GROUND.

**Mini-Circuits**  
ISO 9001 ISO 14001 AS 9100 CERTIFIED  
The Design Engineers Search Engine Provides ACTUAL Data Instantly at [minicircuits.com](http://minicircuits.com)

For detailed performance specs & shopping online see web site

P.O. Box 350166, Brooklyn, New York 11235-0003 (718) 934-4500 Fax (718) 332-4661 [www.minicircuits.com](http://www.minicircuits.com) Provides ACTUAL Data Instantly at [minicircuits.com](http://minicircuits.com)

Notes: 1. Performance and quality attributes and conditions not expressly stated in this specification sheet are intended to be excluded and do not form a part of this specification sheet. 2. Electrical specifications and performance data contained herein are based on Mini-Circuit's applicable established test performance criteria and measurement instructions. 3. The parts covered by this specification sheet are subject to Mini-Circuits standard limited warranty and terms and conditions (collectively, "Standard Terms"); Purchasers of this part are entitled to the rights and benefits contained therein. For a full statement of the Standard Terms and the exclusive rights and remedies thereunder, please visit Mini-Circuits' website at [www.minicircuits.com/MCLStore/terms.jsp](http://www.minicircuits.com/MCLStore/terms.jsp).

REV. C  
M119986  
ZFDC-20-50+  
WZ/TD/CP/AM  
090917