

# Coaxial Bi-Directional Coupler

50Ω Up to 25W 30 to 400 MHz

## ZFDC-20-1H+ ZFDC-20-1H



### Maximum Ratings

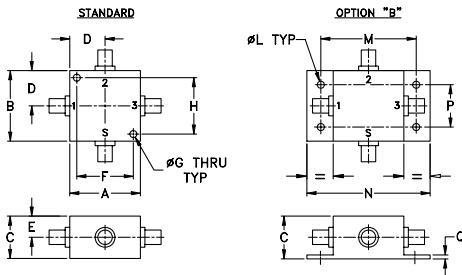
Operating Temperature	-55°C to 100°C
Storage Temperature	-55°C to 100°C

Permanent damage may occur if any of these limits are exceeded.

### Coaxial Connections

INPUT	S
OUTPUT	1
COUPLED (forward)	3
COUPLED (reverse)	2

### Outline Drawing



### Outline Dimensions (inch/mm)

A	B	C	D	E	F	G	H	J	K	L	M	N	P	Q	wt
1.25	1.25	.75	.63	.38	1.000	.125	1.000	--	--	.125	1.688	2.18	.75	.07	grams
31.75	31.75	19.05	16.00	9.65	25.40	3.18	25.40	--	--	3.18	42.88	55.37	19.05	1.78	75.0

For option "B" with N-type connectors, dimension "C" increases to 0.94 inches.

### Features

- high power, up to 25W
- wideband, 30 to 400 MHz
- excellent directivity, 30 dB typ.
- low mainline loss, 0.15 dB typ.
- rugged shielded case

### Applications

- VHF/UHF
- instrumentation
- communication receivers & transmitters
- power leveling

### Bi-Directional Coupler Electrical Specifications

FREQ. (MHz)	COUPLING (dB)		MAINLINE LOSS <sup>1</sup> (dB)				DIRECTIVITY (dB)			VSWR (-1)	POWER INPUT, W						
	Nom.	Flatness	L		M		U		Typ.		Min.	Typ.	Max.	MU			
30-400	20.5±0.5	±0.4	0.15	0.4	0.15	0.4	0.3	0.4	30	25	30	25	30	23	1.2	25	25

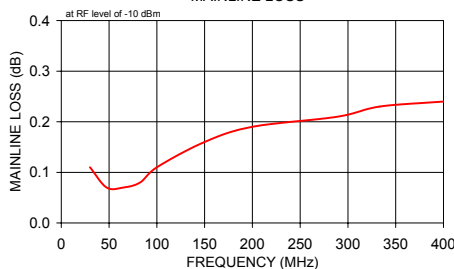
L= 30-100 MHz M= 100-200 MHz U= 200-400 MHz

1. Mainline loss includes theoretical power loss at coupled port.

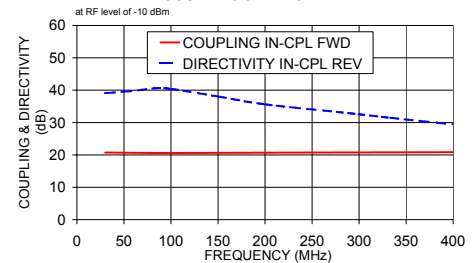
### Typical Performance Data

Frequency (MHz)	Mainline Loss (dB)	Coupling (dB)		Directivity (dB)		Return Loss (dB)			
		In-Out	In-Cpl Fwd	Out-Cpl Rev	Out-Cpl Fwd	In-Cpl Rev	In	Out	Cpl Fwd
30.00	0.11	20.74	20.73	36.33	39.08	17.88	17.93	17.83	17.78
47.50	0.07	20.68	20.66	36.66	39.46	21.75	21.84	22.02	21.88
65.00	0.07	20.63	20.62	36.97	39.93	24.43	24.65	25.33	25.13
82.50	0.08	20.59	20.58	37.14	40.58	26.31	27.05	28.32	28.10
100.00	0.11	20.59	20.58	37.19	40.42	27.24	28.65	30.88	30.36
150.00	0.16	20.63	20.62	38.74	38.06	27.92	30.48	33.62	34.39
200.00	0.19	20.69	20.67	36.80	35.64	29.69	30.30	33.78	39.07
288.89	0.21	20.77	20.74	33.49	32.92	29.81	29.10	30.60	35.64
333.33	0.23	20.80	20.77	31.88	31.46	29.73	28.43	28.85	31.36
400.00	0.24	20.83	20.80	29.81	29.45	28.38	27.54	26.14	26.41

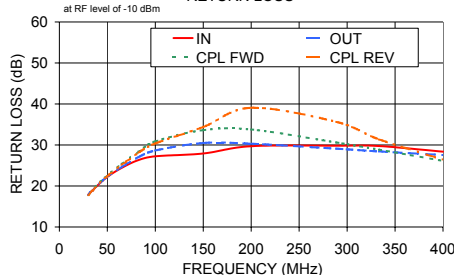
ZFDC-20-1H  
MAINLINE LOSS



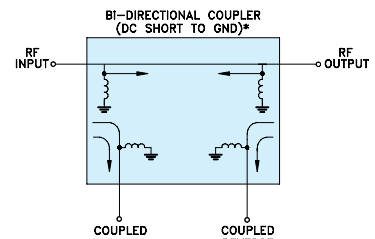
ZFDC-20-1H  
COUPLING & DIRECTIVITY



ZFDC-20-1H  
RETURN LOSS



### Electrical Schematic



\* ELECTRICAL SCHEMATIC IS FOR BI-DIRECTIONAL COUPLER WITH INTERNAL TRANSFORMERS THAT ROUTES DC FROM RF PORTS TO GROUND.

For detailed performance specs & shopping online see web site

**Mini-Circuits**  
ISO 9001 ISO 14001 AS 9100 CERTIFIED  
The Design Engineers Search Engine Provides ACTUAL Data Instantly at [minicircuits.com](http://minicircuits.com)  
IF/RF MICROWAVE COMPONENTS

P.O. Box 350166, Brooklyn, New York 11235-0003 (718) 934-4500 Fax (718) 332-4661

Notes: 1. Performance and quality attributes and conditions not expressly stated in this specification sheet are intended to be excluded and do not form a part of this specification sheet. 2. Electrical specifications and performance data contained herein are based on Mini-Circuit's applicable established test performance criteria and measurement instructions. 3. The parts covered by this specification sheet are subject to Mini-Circuits standard limited warranty and terms and conditions (collectively, "Standard Terms"); Purchasers of this part are entitled to the rights and benefits contained therein. For a full statement of the Standard Terms and the exclusive rights and remedies thereunder, please visit Mini-Circuits' website at [www.minicircuits.com/MCLStore/terms.jsp](http://www.minicircuits.com/MCLStore/terms.jsp).

REV. E  
M124579  
ZFDC-20-1H  
WP/TD/CP/AM  
100512