

Coaxial Bi-Directional Coupler

ZFBDC20-900HP

50Ω Up to 10W 800 to 900 MHz

Maximum Ratings

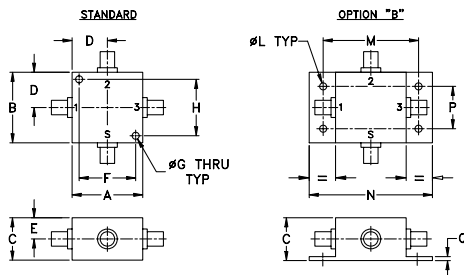
Operating Temperature	-55°C to 100°C
Storage Temperature	-55°C to 100°C

Permanent damage may occur if any of these limits are exceeded.

Coaxial Connections

INPUT	2
OUTPUT	3
COUPLED (forward)	1
COUPLED (reverse)	S

Outline Drawing



Outline Dimensions (inch)

A	B	C	D	E	F	G	H
1.25	1.25	.75	.63	.38	1.000	.125	1.000
31.75	31.75	19.05	16.00	9.65	25.40	3.18	25.40

J	K	L	M	N	P	Q	wt
--	--	.125	1.688	2.18	.75	.07	grams
--	--	3.18	42.88	55.37	19.05	1.78	75.0

For option B with N-Type connectors, dimension "C" increases to 0.94 inches.

Features

- very low mainline loss, 0.1 dB typ.
- excellent directivity, 28 dB typ.
- excellent VSWR, 1.1: typ.
- high power operation, 10W

Applications

- VSWR measurement
- power monitoring of cellular transmitters
- power levelling



CASE STYLE: J17

Connectors	Model	Price	Qty.
SMA	ZFBDC20-900HP	\$79.95	(1-9)
BRACKET (OPTION "B")		\$2.50	(1+)

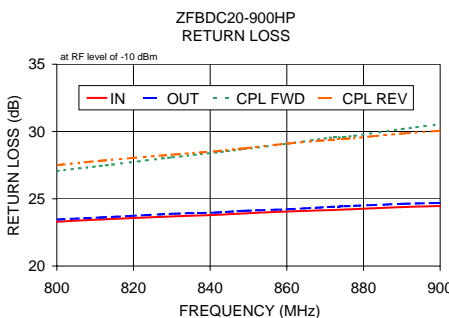
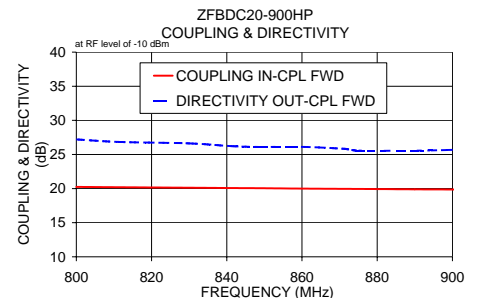
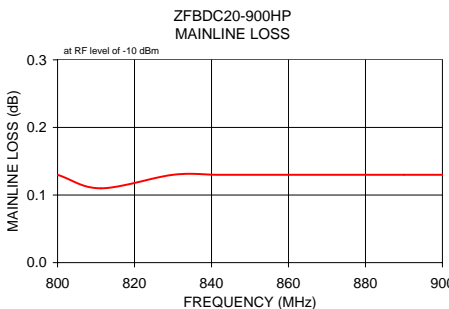
Bi-Directional Coupler Electrical Specifications

FREQ. (MHz)	COUPLING (dB)		MAINLINE LOSS' (dB)		DIRECTIVITY (dB)		VSWR (:1)	POWER INPUT (W)
	Nom.	Flatness	Typ.	Max.	Typ.	Min.		
$f_c - f_u$								
800-900	20.7±0.6	±0.6	0.1	0.4	28	20	1.1	10

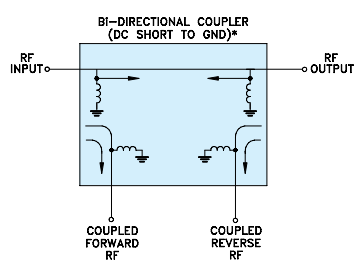
1. Mainline loss includes theoretical power loss at coupled port.

Typical Performance Data

Frequency (MHz)	Mainline Loss (dB)		Coupling (dB)		Directivity (dB)		Return Loss (dB)		
	In-Out	In-Cpl Fwd	In-Cpl Rev	Out-Cpl Rev	Out-Cpl Fwd	In-Cpl Rev	In	Out	Cpl Fwd
800.00	0.13	20.24	20.31	27.20	24.84	23.29	23.46	27.07	27.50
811.25	0.11	20.20	20.24	26.84	25.58	23.46	23.61	27.44	27.82
830.00	0.13	20.13	20.19	26.62	25.41	23.69	23.88	28.08	28.28
841.25	0.13	20.08	20.15	26.22	25.63	23.80	23.97	28.43	28.53
848.75	0.13	20.05	20.11	26.10	25.73	23.91	24.10	28.69	28.74
860.00	0.13	20.00	20.07	26.12	26.00	24.05	24.22	29.09	29.10
871.25	0.13	19.96	20.03	25.83	26.34	24.16	24.39	29.54	29.37
875.00	0.13	19.95	20.00	25.57	26.37	24.20	24.44	29.58	29.44
890.00	0.13	19.89	19.96	25.56	26.84	24.38	24.62	30.18	29.85
901.25	0.13	19.86	19.91	25.69	26.80	24.47	24.70	30.59	30.08



Electrical Schematic



* ELECTRICAL SCHEMATIC IS FOR BI-DIRECTIONAL COUPLER WITH INTERNAL TRANSFORMER(S) THAT ROUTES DC FROM RF PORTS TO GROUND.

Mini-Circuits
 ISO 9001 ISO 14001 AS 9100 CERTIFIED
 Provides ACTUAL Data Instantly at minicircuits.com
 IFR/RF MICROWAVE COMPONENTS

For detailed performance specs & shopping online see web site

P.O. Box 350166, Brooklyn, New York 11235-0003 (718) 934-4500 Fax (718) 332-4661 The Design Engineers Search Engine

Notes: 1. Performance and quality attributes and conditions not expressly stated in this specification sheet are intended to be excluded and do not form a part of this specification sheet. 2. Electrical specifications and performance data contained herein are based on Mini-Circuit's applicable established test performance criteria and measurement instructions. 3. The parts covered by this specification sheet are subject to Mini-Circuits standard limited warranty and terms and conditions (collectively, "Standard Terms"); Purchasers of this part are entitled to the rights and benefits contained therein. For a full statement of the Standard Terms and the exclusive rights and remedies thereunder, please visit Mini-Circuits' website at www.minicircuits.com/MCLStore/terms.jsp.

REV. B
 M124579
 ZFBDC-20-900HP
 WP/TD/CP/AM
 091016