

# Coaxial Attenuator/Switch

## ZFAS-2000

50Ω Bi-Phase 100 to 2000 MHz



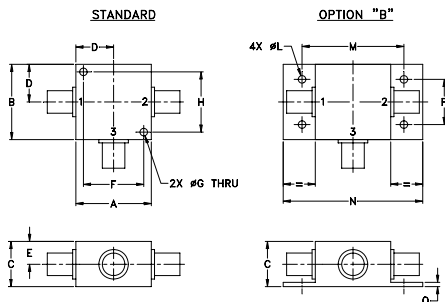
### Maximum Ratings

Operating Temperature	-55°C to 100°C
Storage Temperature	-55°C to 100°C
Control Current	30mA
Permanent damage may occur if any of these limits are exceeded.	

### Coaxial Connections

INPUT	2
OUTPUT	1
CONTROL	3

### Outline Drawing



### Outline Dimensions (inch/mm)

A	B	C	D	E	F	G	H
1.25	1.25	.75	.63	.38	1.00	.125	1.000
31.75	31.75	19.05	16.00	9.65	25.40	3.18	25.40
J	K	L	M	N	P	Q	wt
--	--	.125	1.688	2.18	.75	.07	grams
--	--	3.18	42.88	55.37	19.05	1.78	70.0

### Features

- wideband, 100 to 2000 MHz
- rugged shielded case

### Applications

- bi-phase modulator

CASE STYLE: K18

Connectors	Model	Price	Qty.
SMA	ZFAS-2000	\$64.95	(1-9)
BRACKET (OPTION "B")		\$2.50	(1+)

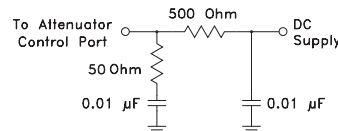
### Attenuator/Switch Electrical Specifications

FREQUENCY (MHz)	INSERTION LOSS (dB) ±20 mA	MAX. INPUT PWR (dBm) ±20mA	IN-OUT ISOLATION (dB) 0 mA						BI-PHASE X̄ (±20 mA) Typ.						
			L		M		U		Δ AMP (dB)		Phase (deg.) deviation from 180°				
IN f <sub>L</sub> -f <sub>U</sub>	CON	Mid-Band m Typ. Max.	Total Range Typ. Max.	1 dB compr.	no damage	Typ.	Min.	Typ.	Min.	Typ.	Min.	m	Total Range	m	Total Range
100-2000	DC-0.5	4.2 6.5	5.4 7.5	19*	25	30	22	--	--	26	20	0.3	0.4	5.0	8.0

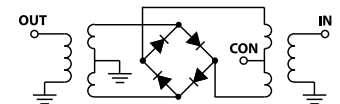
L = low range [f<sub>L</sub> to 10 f<sub>L</sub>] M = mid range [10 f<sub>L</sub> to f<sub>U</sub>/2] U = upper range [f<sub>U</sub>/2 to f<sub>U</sub>] m = [2 f<sub>L</sub> to f<sub>U</sub>/2]  
 \* 15 dBm from 100-800 MHz.

Performance specifications apply for input power up to 10 dB below stated 1 dB compression.

### suggested control port biasing configuration

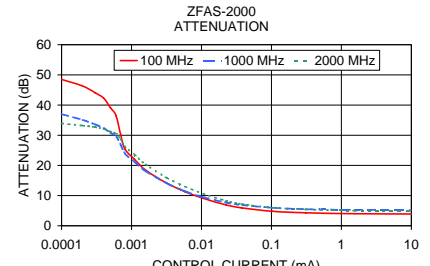
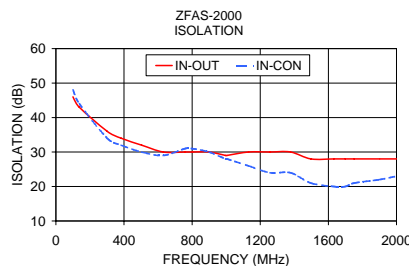
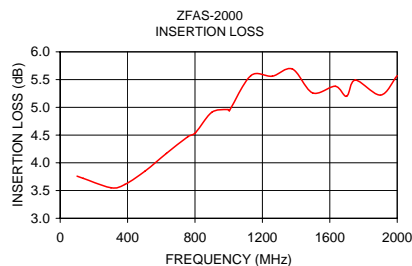


### electrical schematic



### Typical Performance Data

Freq. (MHz)	I. Loss (dB) at 20mA	±Control ΔAMP (dB)	20mA ΔPhase (deg.)	Isolation (dB) (in-out)	Input R. Loss (dB)	Control Current (mA)	Attenuation (dB)			Phase Δ ref at 15mA Ctrl			Input VSWR				
							100 MHz	1000 MHz	2000 MHz	100 MHz	1000 MHz	2000 MHz	100 MHz	1000 MHz	2000 MHz		
X̄	σ	X̄	X̄	X̄	X̄				deg.	deg.	deg.						
100.0	3.76	0.006	0.02	179.4	46	48	9.5	0.0000	51.0	38.9	34.4	89.6	18.6	46.6	1.6	4.7	2.9
137.1	3.72	0.003	0.01	179.0	43	44	10.2	0.0001	48.5	37.0	33.9	91.3	12.9	42.2	1.6	4.7	2.9
301.5	3.55	0.001	0.03	178.2	36	34	11.0	0.0002	46.3	35.1	33.2	89.8	8.7	35.1	1.6	4.6	2.9
383.8	3.61	0.001	0.04	177.7	34	32	10.5	0.0003	44.1	33.6	32.7	85.5	5.8	31.0	1.5	4.6	2.9
503.4	3.85	0.010	0.08	177.1	32	30	9.3	0.0004	42.3	32.4	32.1	84.8	2.4	27.0	1.5	4.6	2.9
630.4	4.17	0.027	0.18	176.4	30	29	7.9	0.0005	39.1	30.8	31.2	78.5	-1.4	21.2	1.5	4.6	2.9
757.5	4.47	0.059	0.21	176.3	30	31	6.9	0.0006	36.5	29.7	30.6	71.5	-4.8	16.8	1.5	4.5	2.9
802.4	4.54	0.061	0.22	176.4	30	31	6.7	0.0007	30.2	26.8	28.7	53.5	-12.0	6.9	1.5	4.4	2.8
899.5	4.91	0.107	0.27	176.1	30	30	6.3	0.0008	25.5	24.0	26.3	43.0	-15.6	-0.9	1.4	4.2	2.7
996.7	4.96	0.114	0.28	175.9	29	28	6.2	0.0011	22.0	21.2	23.6	36.6	-16.4	-5.9	1.4	4.0	2.6
1004.2	4.94	0.118	0.28	175.8	29	28	6.2	0.0016	18.4	18.1	20.3	31.0	-16.0	-8.8	1.3	3.7	2.4
1131.3	5.57	0.162	0.36	175.7	30	26	6.4	0.0032	14.1	14.1	15.9	24.3	-13.7	-9.8	1.2	3.3	2.0
1258.3	5.56	0.105	0.36	175.5	30	24	7.0	0.0058	11.3	11.5	13.0	19.5	-11.1	-8.9	1.2	3.1	1.8
1377.9	5.69	0.045	0.37	175.5	30	24	7.7	0.0106	9.1	9.5	10.6	14.8	-8.6	-7.5	1.3	3.0	1.6
1497.5	5.26	0.053	0.33	175.2	28	21	8.7	0.0226	6.9	7.7	8.3	9.5	-5.5	-5.4	1.5	2.9	1.4
1632.1	5.38	0.045	0.27	174.7	28	20	10.0	0.0381	5.9	6.9	7.2	6.7	-4.0	-4.0	1.6	2.9	1.4
1699.4	5.20	0.068	0.29	174.2	28	20	10.8	0.1031	4.8	6.0	6.0	3.2	-2.0	-2.1	1.8	3.0	1.5
1751.7	5.49	0.068	0.27	174.2	28	21	11.3	0.3098	4.3	5.5	5.4	1.3	-0.9	-1.0	1.9	3.0	1.6
1901.2	5.22	0.090	0.23	173.0	28	22	12.4	1.5487	4.0	5.3	5.0	0.4	-0.4	-0.4	2.0	3.0	1.7
2000.0	5.57	0.156	0.25	172.7	28	23	12.5	15.1120	3.9	5.2	4.9	0.1	-0.1	0.0	2.0	3.1	1.7



P.O. Box 350166, Brooklyn, New York 11235-0003 (718) 934-4500 Fax (718) 332-4661 The Design Engineers Search Engine Provides ACTUAL Data Instantly at [minicircuits.com](http://minicircuits.com)

Notes: 1. Performance and quality attributes and conditions not expressly stated in this specification sheet are intended to be excluded and do not form a part of this specification sheet. 2. Electrical specifications and performance data contained herein are based on Mini-Circuit's applicable established test performance criteria and measurement instructions. 3. The parts covered by this specification sheet are subject to Mini-Circuits standard limited warranty and terms and conditions (collectively, "Standard Terms"); Purchasers of this part are entitled to the rights and benefits contained therein. For a full statement of the Standard Terms and the exclusive rights and remedies thereunder, please visit Mini-Circuits' website at [www.minicircuits.com/MCLStore/terms.jsp](http://www.minicircuits.com/MCLStore/terms.jsp).

REV. OR  
M96904  
ZFAS-2000  
WP/TD/CP  
090728