

Coaxial Directional Coupler

ZEDC-10-2B

50Ω

1 to 1000 MHz



CASE STYLE: V37

Connectors	Model	Price	Qty.
SMA	ZEDC-10-2B	\$64.95 ea.	(1-9)

Maximum Ratings

Operating Temperature -55°C to 100°C

Storage Temperature -55°C to 100°C

Permanent damage may occur if any of these limits are exceeded.

Coaxial Connections

INPUT	1
OUTPUT	2
COUPLED	3

Features

- wideband, 1 to 1000 MHz
- excellent directivity, 30 dB typ.
- rugged shielded case

Applications

- VHF/UHF
- instrumentation
- communication receivers & transmitters
- cellular

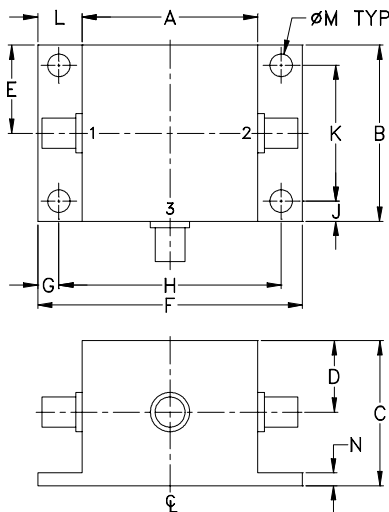
Directional Coupler Electrical Specifications

FREQ. RANGE (MHz)	COUPLING (dB)		MAINLINE LOSS ¹ (dB)						DIRECTIVITY (dB)						VSWR (:1)	POWER INPUT (W)	
	Nom.	Flatness	L		M		U		L		M		U			L	MU
f _L -f _U			Typ.	Max.	Typ.	Max.	Typ.	Max.	Typ.	Min.	Typ.	Min.	Typ.	Min.	Typ.	Max.	Max.
1-1000	11±0.5	±0.75	1.3	1.8	1.5	1.8	1.5	1.8	35	30	30	20	18	13	1.3	1.5	3.0

L = low range [f_L to 10 f_L] M = mid range [10 f_L to f_U/2] U = upper range [f_U/2 to f_U]

1. Mainline loss includes theoretical power loss at coupled port.

Outline Drawing

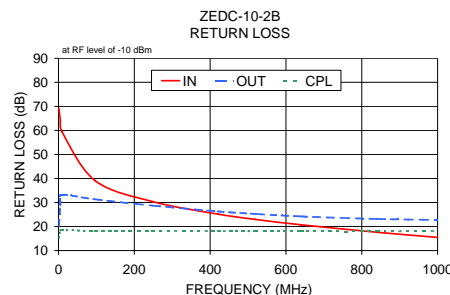
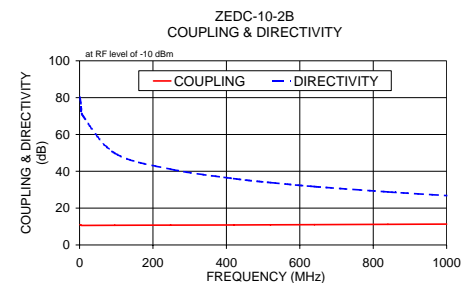
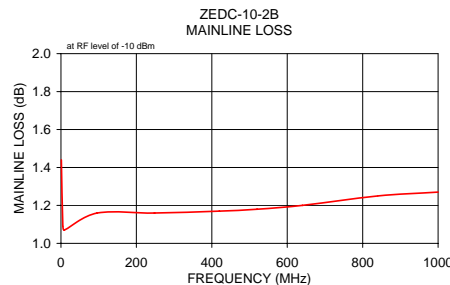


Outline Dimensions (inch/mm)

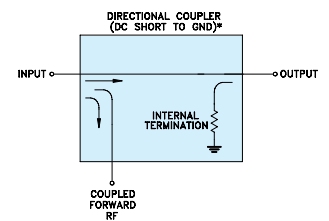
A	B	C	D	E	F	G
.83	.83	.75	.37	.42	1.25	.10
21.08	21.08	19.05	9.40	10.67	31.75	2.54
H	J	K	L	M	N	wt
1.050	.10	.640	.21	.106	.06	grams
26.67	2.54	16.26	5.33	2.69	1.52	22.0

Typical Performance Data

Frequency (MHz)	Mainline Loss (dB) In-Out	Coupling (dB) In-Cpl	Directivity (dB)		Return Loss (dB)		Cpl
			In	Out	In	Out	
1.00	1.44	11.03	80.15	69.12	20.04	15.32	
5.00	1.09	10.64	74.80	64.16	29.77	18.35	
9.00	1.07	10.62	70.11	59.49	33.22	18.65	
96.00	1.16	10.69	49.83	39.14	31.36	18.19	
248.00	1.16	10.76	41.15	30.39	28.72	18.19	
420.00	1.17	10.84	36.04	25.20	26.31	18.12	
520.00	1.18	10.92	33.89	22.97	25.24	18.03	
640.00	1.20	11.01	31.72	20.71	24.23	17.96	
840.00	1.25	11.21	28.83	17.62	23.14	17.96	
1000.00	1.27	11.32	26.81	15.49	22.76	18.15	



Electrical Schematic



* ELECTRICAL SCHEMATIC IS FOR DIRECTIONAL COUPLER WITH INTERNAL TRANSFORMERS THAT ROUTES DC FROM RF PORTS TO GROUND.

Mini-Circuits
ISO 9001 ISO 14001 AS 9100 CERTIFIED
IF/RF MICROWAVE COMPONENTS

For detailed performance specs & shipping online see web site

P.O. Box 350166, Brooklyn, New York 11235-0003 (718) 934-4500 Fax (718) 332-4661 The Design Engineers Search Engine Provides ACTUAL Data Instantly at minicircuits.com

Notes: 1. Performance and quality attributes and conditions not expressly stated in this specification sheet are intended to be excluded and do not form a part of this specification sheet. 2. Electrical specifications and performance data contained herein are based on Mini-Circuit's applicable established test performance criteria and measurement instructions. 3. The parts covered by this specification sheet are subject to Mini-Circuits standard limited warranty and terms and conditions (collectively, "Standard Terms"); Purchasers of this part are entitled to the rights and benefits contained therein. For a full statement of the Standard Terms and the exclusive rights and remedies thereunder, please visit Mini-Circuits' website at www.minicircuits.com/MCLStore/terms.jsp.

REV. A
M119986
ZEDC-10-2B
WZ/TD/CP/AM
090915