

Coaxial

# Power Splitter/Combiner

6 Way-0° 50Ω 1500 to 2000 MHz

ZC6PD-1900W+  
ZC6PD-1900W



CASE STYLE: AB185

Connectors	Model	Price	Qty.
SMA	ZC6PD-1900W-S(+)	\$129.95	(1-9)

+ RoHS compliant in accordance with EU Directive (2002/95/EC)

The +Suffix identifies RoHS Compliance. See our web site for RoHS Compliance methodologies and qualifications.

## Maximum Ratings

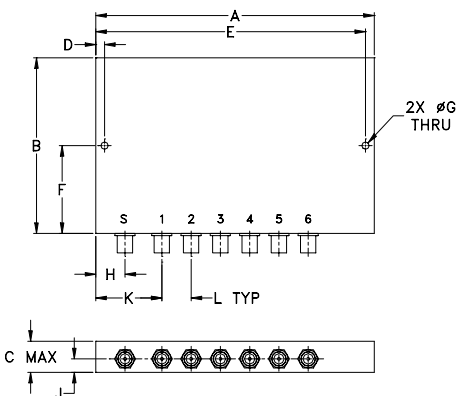
Operating Temperature	-55°C to 100°C
Storage Temperature	-55°C to 100°C
Power Input (as a splitter)	10W max.
Internal Dissipation	0.875W max.

Permanent damage may occur if any of these limits are exceeded.

## Coaxial Connections

SUM PORT	S
PORT 1,2,3,4,5,6	1,2,3,4,5,6

## Outline Drawing



## Outline Dimensions (inch/mm)

A	B	C	D	E	F
4.76	3.00	.53	.150	4.610	1.500
120.90	76.20	13.46	3.81	117.09	38.10
G	H	J	K	L	wt
.125	.50	.25	1.13	.50	grams
3.18	12.70	6.35	28.70	12.70	155

## Features

- low insertion loss, 0.5 dB typ.
- high isolation, 30 dB typ.
- up to 10W power input as splitters
- rugged shielded case

## Applications

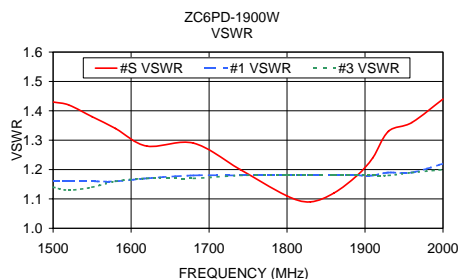
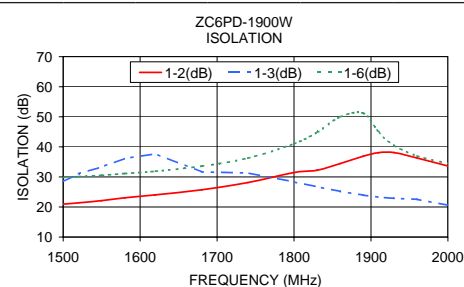
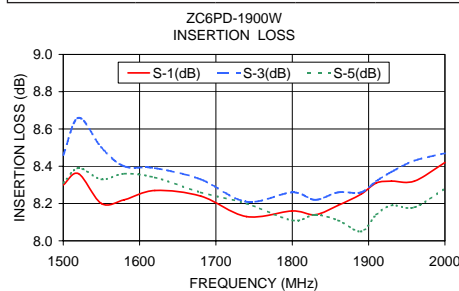
- GPS
- PCS
- communication systems
- instrumentation

## Electrical Specifications

FREQ. RANGE (MHz)	ISOLATION (dB)		INSERTION LOSS (dB) ABOVE 7.8 dB		AMPLITUDE UNBALANCE (dB)	VSWR (:1)			
	Typ.	Min.	Typ.	Max.	Max.	S		OUT	
$f_L$ - $f_U$						Typ.	Max.	Typ.	Max.
1500-2000	30	15	0.5	1.0	0.6	1.1	1.68	1.1	1.5

## Typical Performance Data

Frequency (MHz)	Insertion Loss (dB)			Amplitude Unbalance (dB)	Isolation (dB)			VSWR S	VSWR 1	VSWR 3
	S-1	S-2	S-3		1-2	1-3	1-6			
1500.00	8.30	8.46	8.31	0.21	20.94	28.46	29.86	1.43	1.16	1.14
1520.00	8.36	8.66	8.39	0.35	21.38	31.08	30.12	1.42	1.16	1.13
1550.00	8.20	8.50	8.33	0.37	22.11	33.34	30.54	1.38	1.16	1.14
1580.00	8.22	8.40	8.36	0.36	23.06	36.14	31.15	1.34	1.16	1.16
1620.00	8.27	8.39	8.34	0.18	24.03	37.71	31.91	1.28	1.17	1.17
1680.00	8.24	8.33	8.26	0.11	25.71	31.69	33.60	1.29	1.18	1.17
1740.00	8.13	8.21	8.20	0.18	28.12	31.33	36.26	1.20	1.18	1.18
1800.00	8.16	8.26	8.11	0.17	31.45	28.35	41.05	1.11	1.18	1.18
1830.00	8.14	8.22	8.14	0.11	32.22	26.76	44.85	1.09	1.18	1.18
1860.00	8.19	8.26	8.11	0.17	34.45	25.19	50.00	1.12	1.18	1.18
1890.00	8.25	8.26	8.05	0.24	36.88	23.95	51.21	1.18	1.18	1.18
1910.00	8.31	8.32	8.14	0.23	38.07	23.29	44.96	1.24	1.18	1.18
1930.00	8.32	8.37	8.19	0.21	38.09	22.88	40.44	1.33	1.19	1.18
1960.00	8.32	8.43	8.18	0.30	36.29	22.57	36.99	1.36	1.19	1.19
2000.00	8.42	8.47	8.28	0.24	33.63	20.59	34.49	1.44	1.22	1.20



## electrical schematic



**Mini-Circuits®**  
ISO 9001 ISO 14001 AS 9100 CERTIFIED  
The Design Engineers Search Engine Provides ACTUAL Data Instantly at [minicircuits.com](http://minicircuits.com)  
IF/RF MICROWAVE COMPONENTS

For detailed performance specs & shopping online see web site

P.O. Box 350166, Brooklyn, New York 11235-0003 (718) 934-4500 Fax (718) 332-4661 [minicircuits.com](http://minicircuits.com)

Notes: 1. Performance and quality attributes and conditions not expressly stated in this specification sheet are intended to be excluded and do not form a part of this specification sheet. 2. Electrical specifications and performance data contained herein are based on Mini-Circuit's applicable established test performance criteria and measurement instructions. 3. The parts covered by this specification sheet are subject to Mini-Circuits standard limited warranty and terms and conditions (collectively, "Standard Terms"); Purchasers of this part are entitled to the rights and benefits contained therein. For a full statement of the Standard Terms and the exclusive rights and remedies thereunder, please visit Mini-Circuits' website at [www.minicircuits.com/MCLStore/terms.jsp](http://www.minicircuits.com/MCLStore/terms.jsp).

REV. A  
M122556  
ZC6PD-1900W  
HY/TD/CP/AM  
090827