

Coaxial Power Splitter/Combiner

ZC16PD-252+

16 Way-0° 50Ω 10 to 2500 MHz

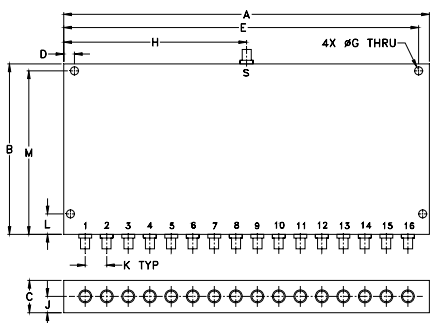
Maximum Ratings

Operating Temperature	-40°C to 85°C
Storage Temperature	-55°C to 100°C
Power Input (as a splitter)	1W max.
Internal Dissipation	0.75W max.
Permanent damage may occur if any of these limits are exceeded.	

Coaxial Connections

SUM PORT	S
PORT 1,2,3,.....,16	1,2,3,.....,16

Outline Drawing



Outline Dimensions (inch/mm)

A	B	C	D	E	F	G
8.50	3.95	.75	.250	8.250	—	.187
215.90	100.33	19.05	6.35	209.55	—	4.75
H	J	K	L	M	wt	
4.250	.38	.500	.475	3.475	grams	
107.95	9.65	12.70	12.07	88.27	710	

Features

- wide frequency band 10 to 2500 MHz
- good amplitude unbalance, 0.3 dB typ.
- good phase unbalance, 5 deg. typ.

Applications

- UHF
- cellular, GPS, PCS
- communication systems



CASE STYLE: UU179

Connectors	Model	Price	Qty.
SMA	ZC16PD-252-S+	\$359.95 ea.	(1-9)

+ RoHS compliant in accordance with EU Directive (2002/95/EC)

The +Suffix has been added in order to identify RoHS Compliance. See our web site for RoHS Compliance methodologies and qualifications.

Electrical Specifications

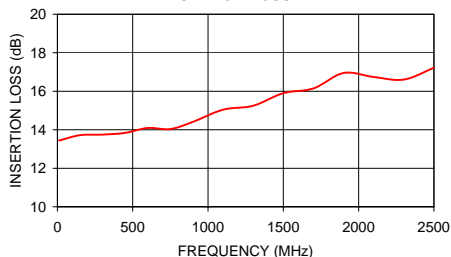
FREQ. RANGE (MHz)	ISOLATION (dB)			INSERTION LOSS (dB) ABOVE 12 dB			PHASE UNBALANCE (Degrees)			AMPLITUDE UNBALANCE (dB)								
	L	M	U	L	M	U	L	M	U	L	M	U						
f _L -f _U	Typ. Min.	Typ. Min.	Typ. Min.	Typ. Max.	Typ. Max.	Typ. Max.	Max.	Max.	Max.	Max.	Max.	Max.						
10-2500	25	20	17	14	16	14	1.5	2.8	3.2	4.5	5.5	6.5	2	10	18	0.7	0.7	1.0

L = low range [f_L to 10 f_L] M = mid range [10 f_L to f_U/2] U = upper range [f_U/2 to f_U]

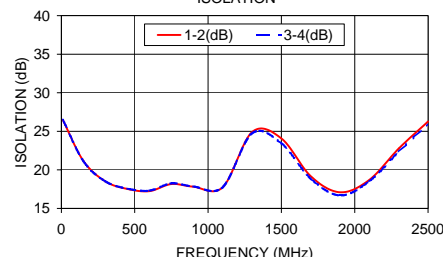
Typical Performance Data

Freq. (MHz)	Insertion Loss (dB)	Amplitude Unbalance (dB)	Isolation (dB)		Phase Unbalance (deg.)	VSWR S	VSWR 1
			1-2	3-4			
10.00	13.44	0.04	26.46	26.50	0.15	1.23	1.62
150.00	13.72	0.04	21.16	21.11	0.58	1.34	1.45
300.00	13.75	0.06	18.51	18.51	1.03	1.15	1.36
450.00	13.84	0.09	17.52	17.57	1.36	1.25	1.30
600.00	14.09	0.10	17.24	17.31	1.83	1.46	1.25
750.00	14.04	0.10	18.16	18.25	2.29	1.13	1.22
900.00	14.41	0.12	17.82	17.85	2.89	1.52	1.25
1100.00	15.04	0.12	17.74	17.75	3.68	1.92	1.18
1300.00	15.25	0.20	24.90	24.74	4.85	1.80	1.13
1500.00	15.90	0.35	24.08	23.44	5.73	1.90	1.28
1700.00	16.15	0.46	19.18	18.86	5.75	1.75	1.37
1900.00	16.95	0.47	17.09	16.69	4.97	2.01	1.41
2100.00	16.74	0.49	18.71	18.53	6.11	1.59	1.30
2300.00	16.61	0.37	22.77	22.36	6.46	1.10	1.21
2500.00	17.22	0.51	26.28	26.00	7.35	1.11	1.12

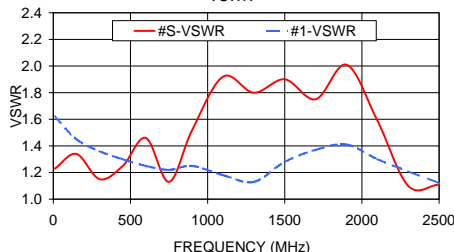
ZC16PD-252+ INSERTION LOSS



ZC16PD-252+ ISOLATION



ZC16PD-252+ VSWR



electrical schematic



Mini-Circuits®
 ISO 9001 ISO 14001 AS 9100 CERTIFIED
 The Design Engineers Search Engine Provides ACTUAL Data Instantly at minicircuits.com
 IF/RF MICROWAVE COMPONENTS

For detailed performance specs & shopping online see web site

P.O. Box 350166, Brooklyn, New York 11235-0003 (718) 934-4500 Fax (718) 332-4661

REV. OR
 M112749
 ED-12956/1
 ZC16PD-252-S+
 HY/TD/AM
 090827

Notes: 1. Performance and quality attributes and conditions not expressly stated in this specification sheet are intended to be excluded and do not form a part of this specification sheet. 2. Electrical specifications and performance data contained herein are based on Mini-Circuit's applicable established test performance criteria and measurement instructions. 3. The parts covered by this specification sheet are subject to Mini-Circuits standard limited warranty and terms and conditions (collectively, "Standard Terms"); Purchasers of this part are entitled to the rights and benefits contained therein. For a full statement of the Standard Terms and the exclusive rights and remedies thereunder, please visit Mini-Circuits' website at www.minicircuits.com/MCLStore/terms.jsp.