

Coaxial

Power Splitter/Combiner

8 Way-0° 50Ω 3200 to 6200 MHz

ZB8PD-622+



Maximum Ratings

Operating Temperature	-55°C to 100°C
Storage Temperature	-55°C to 100°C
Power Input (as a splitter)	10W max.
Internal Dissipation	0.875W max.

Permanent damage may occur if any of these limits are exceeded.

Coaxial Connections

SUMPORT	S
PORT 1,2,3,4,5,6,7,8	1,2,3,4,5,6,7,8

Features

- wideband
- good isolation, 26 dB typ.
- good output VSWR, 1.22:1 typ.

Applications

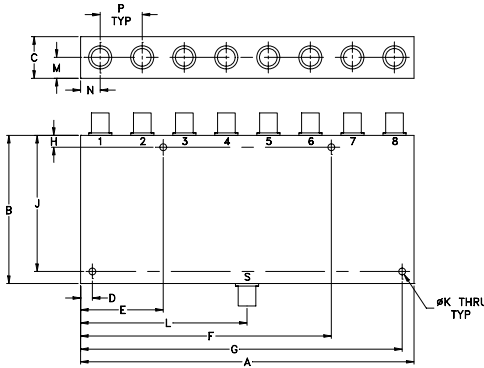
- ISM applications
- SATCOM
- WIMAX
- radar

CASE STYLE: Z41			
Connectors	Model	Price	Qty.
SMA	ZB8PD-622-S+	\$158.95 ea.	(1-9)

+ RoHS compliant in accordance with EU Directive (2002/95/EC)

The +Suffix has been added in order to identify RoHS Compliance. See our web site for RoHS Compliance methodologies and qualifications.

Outline Drawing



Outline Dimensions (inch/mm)

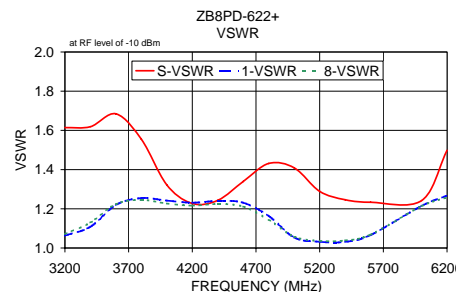
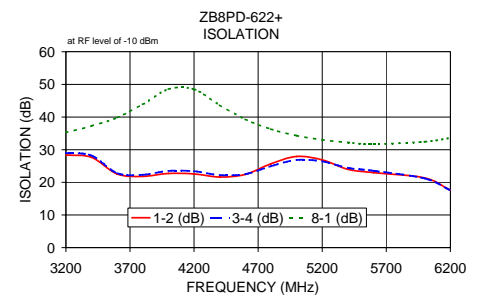
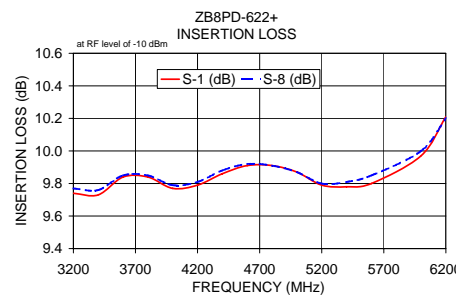
A	B	C	D	E	F	G	H
7.06	3.13	.88	.250	1.750	5.310	6.810	.250
179.32	79.50	22.35	6.35	44.45	134.87	172.97	6.35
J	K	L	M	N	P		wt
2.875	.144	3.53	.44	.415	.89		grams
73.03	3.66	89.66	11.18	10.54	22.61		800

Electrical Specifications

FREQ. RANGE (MHz)	ISOLATION (dB)		INSERTION LOSS (dB) ABOVE 9 dB		PHASE UNBALANCE (Degrees)	AMPLITUDE UNBALANCE (dB)	VSWR (:1)					
	Typ.	Min.	Typ.	Max.			S Typ.	S Max.	OUT Typ.	OUT Max.		
f _L -f _U					Max.	Max.						
3200-6200	26	16	0.8	1.8	6	0.7	1.5	1.9	1.22	1.6		

Typical Performance Data

Freq. (MHz)	Insertion Loss (dB)						Amplitude Unbalance (dB)	Isolation (dB)				Phase Unbalance (deg.)	VSWR		
	S-1	S-2	S-3	S-4	S-6	S-8		1-2	8-1	3-4	5-6		S	1	8
3200.00	9.74	9.81	9.84	9.77	9.87	9.77	0.13	28.38	35.26	29.00	29.04	1.09	1.61	1.06	1.07
3400.00	9.73	9.81	9.83	9.77	9.85	9.76	0.12	27.66	37.29	28.22	27.88	0.92	1.62	1.11	1.13
3600.00	9.84	9.91	9.93	9.88	9.93	9.85	0.09	22.54	39.82	22.83	22.57	0.88	1.68	1.22	1.22
3800.00	9.84	9.92	9.95	9.91	9.95	9.85	0.12	21.82	43.90	22.32	22.05	0.85	1.56	1.26	1.25
4000.00	9.77	9.88	9.93	9.89	9.95	9.79	0.18	22.71	48.55	23.51	22.76	1.18	1.32	1.24	1.23
4200.00	9.79	9.91	9.99	9.91	10.04	9.81	0.25	22.56	48.53	23.43	22.27	1.48	1.23	1.23	1.22
4400.00	9.86	10.00	10.10	9.95	10.15	9.88	0.29	21.62	43.68	22.22	21.13	1.61	1.24	1.24	1.22
4600.00	9.91	10.09	10.19	9.96	10.23	9.92	0.32	22.41	39.31	22.51	21.66	1.43	1.34	1.23	1.21
4800.00	9.91	10.13	10.24	9.94	10.27	9.91	0.36	25.67	36.32	24.95	24.18	1.21	1.43	1.16	1.14
5000.00	9.87	10.08	10.18	9.86	10.22	9.87	0.36	27.91	34.31	26.85	26.16	1.33	1.41	1.05	1.06
5200.00	9.79	9.98	10.04	9.77	10.08	9.80	0.31	26.88	33.03	26.43	25.94	1.31	1.29	1.03	1.04
5400.00	9.78	9.93	9.95	9.75	9.97	9.81	0.22	23.98	32.20	24.45	24.12	1.31	1.25	1.03	1.04
5600.00	9.80	9.90	9.89	9.79	9.91	9.85	0.15	22.98	31.71	23.54	23.08	1.50	1.23	1.07	1.07
6000.00	9.97	10.01	9.99	10.09	9.97	10.00	0.16	21.36	32.44	21.21	20.66	1.98	1.24	1.21	1.21
6200.00	10.21	10.25	10.20	10.40	10.18	10.20	0.27	17.59	33.59	17.59	17.28	2.53	1.50	1.27	1.26



electrical schematic



P.O. Box 350166, Brooklyn, New York 11235-0003 (718) 934-4500 Fax (718) 332-4661 The Design Engineers Search Engine Provides ACTUAL Data Instantly at minicircuits.com

Notes: 1. Performance and quality attributes and conditions not expressly stated in this specification sheet are intended to be excluded and do not form a part of this specification sheet. 2. Electrical specifications and performance data contained herein are based on Mini-Circuit's applicable established test performance criteria and measurement instructions. 3. The parts covered by this specification sheet are subject to Mini-Circuits standard limited warranty and terms and conditions (collectively, "Standard Terms"); Purchasers of this part are entitled to the rights and benefits contained therein. For a full statement of the Standard Terms and the exclusive rights and remedies thereunder, please visit Mini-Circuits' website at www.minicircuits.com/MCLStore/terms.jsp.

For detailed performance specs & shopping online see web site

REV. OR
M106317
ED-1125/41
ZB8PD-622+
HY/TD/CP/AM
090827