

Power Splitter/Combiner

ZB6PD1-900

6 Way-0° 50Ω 800 to 900 MHz

Maximum Ratings

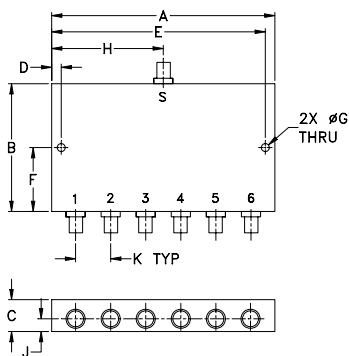
Operating Temperature	-55°C to 100°C
Storage Temperature	-55°C to 100°C
Power Input (as a splitter)	10W max.
Internal Dissipation	0.5W max.

Permanent damage may occur if any of these limits are exceeded.

Coaxial Connections

SUM PORT	S
PORT 1,2,3,4,5,6	1,2,3,4,5,6

Outline Drawing



Outline Dimensions (inch/mm)

A	B	C	D	E	F
6.00	1.62	.88	.250	5.750	.810
152.40	41.15	22.35	6.35	146.05	20.57
G	H	J	K		wt
.144	3.00	.44	1.00		grams
3.66	76.20	11.18	25.40		340

Features

- low insertion loss, 0.3 dB typ.
- high isolation, 32 dB typ.
- excellent VSWR, 1.15:1 typ.
- rugged shielded case

Applications

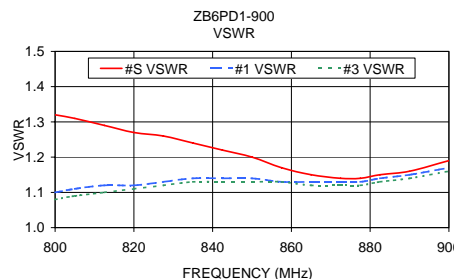
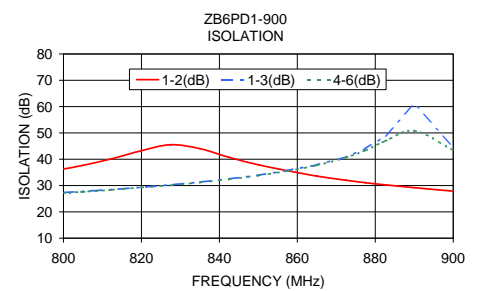
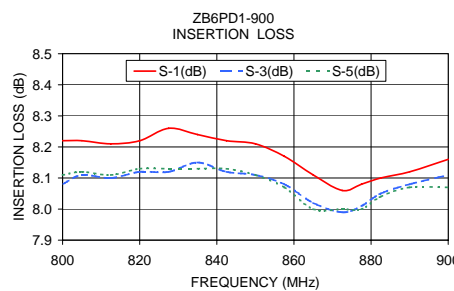
- cellular
- instrumentation
- communication systems

Electrical Specifications

FREQ. RANGE (MHz)	ISOLATION (dB)		INSERTION LOSS (dB) ABOVE 7.8 dB		PHASE UNBALANCE (Degrees)	AMPLITUDE UNBALANCE (dB)	VSWR (:1)	
	Typ.	Min.	Typ.	Max.	Max.	Max.	S Typ.	OUT Typ.
f _L -f _U								
800-900	32	20	0.3	0.7	—	0.5	1.1	1.5
							1.13	1.35

Typical Performance Data

Frequency (MHz)	Insertion Loss (dB)			Amplitude Unbalance (dB)	Isolation (dB)			Phase Unbal. (deg.)	VSWR S	VSWR 1	VSWR 3
	S-1	S-2	S-3		1-2	1-3	4-6				
800.00	8.22	8.08	8.11	0.26	36.28	27.33	27.24	1.57	1.32	1.10	1.08
805.00	8.22	8.11	8.12	0.25	37.67	27.79	27.65	1.56	1.31	1.11	1.09
812.50	8.21	8.10	8.11	0.23	40.22	28.50	28.40	1.55	1.29	1.12	1.10
820.00	8.22	8.12	8.13	0.22	43.25	29.34	29.25	1.52	1.27	1.12	1.11
827.50	8.26	8.12	8.13	0.24	45.51	30.28	30.13	1.68	1.26	1.13	1.12
835.00	8.24	8.15	8.13	0.21	44.01	31.33	31.17	1.54	1.24	1.14	1.13
842.50	8.22	8.12	8.13	0.23	40.72	32.56	32.39	1.54	1.22	1.14	1.13
850.00	8.21	8.11	8.11	0.22	37.88	33.94	33.83	1.56	1.20	1.14	1.13
857.50	8.17	8.08	8.07	0.22	35.62	35.76	35.58	1.60	1.17	1.13	1.13
865.00	8.11	8.02	8.00	0.22	33.60	37.90	37.67	1.73	1.15	1.13	1.12
872.50	8.06	7.99	8.00	0.21	32.02	40.88	40.69	1.66	1.14	1.13	1.12
877.50	8.08	8.01	8.00	0.20	31.09	44.08	43.37	1.60	1.14	1.13	1.12
882.50	8.10	8.05	8.04	0.18	30.28	48.77	46.90	1.46	1.15	1.14	1.13
890.00	8.12	8.08	8.07	0.18	29.21	60.96	50.85	1.42	1.16	1.15	1.14
900.00	8.16	8.11	8.07	0.19	27.85	44.74	43.51	1.50	1.19	1.17	1.16



electrical schematic



For detailed performance specs & shopping online see web site

P.O. Box 350166, Brooklyn, New York 11235-0003 (718) 934-4500 Fax (718) 332-4661 The Design Engineers Search Engine Provides ACTUAL Data Instantly at minicircuits.com

Notes: 1. Performance and quality attributes and conditions not expressly stated in this specification sheet are intended to be excluded and do not form a part of this specification sheet. 2. Electrical specifications and performance data contained herein are based on Mini-Circuit's applicable established test performance criteria and measurement instructions. 3. The parts covered by this specification sheet are subject to Mini-Circuits standard limited warranty and terms and conditions (collectively, "Standard Terms"); Purchasers of this part are entitled to the rights and benefits contained therein. For a full statement of the Standard Terms and the exclusive rights and remedies thereunder, please visit Mini-Circuits' website at www.minicircuits.com/MCLStore/terms.jsp.

REV. OR
M96283
ZB6PD1-900
HY/TD/CP
090827