

Coaxial High Power Combiner

ZB4CS-960-12W

4 Way-0° 50Ω 820 to 960 MHz

Maximum Ratings

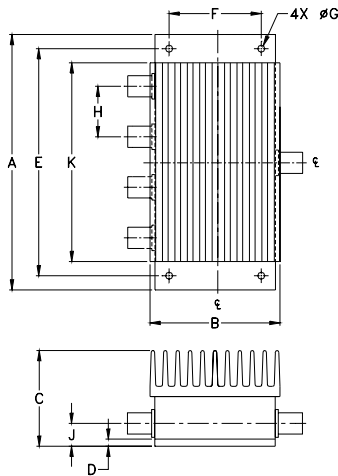
Operating Temperature	-55°C to 90°C
Storage Temperature	-55°C to 100°C

Permanent damage may occur if any of these limits are exceeded.

Coaxial Connections

SUM PORT	S
PORT 1	1
PORT 2	2
PORT 3	3
PORT 4	4

Outline Drawing



Outline Dimensions (inch/mm)

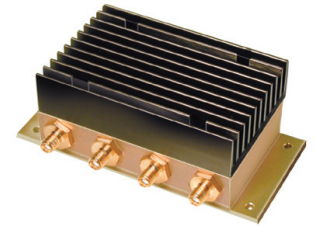
A	B	C	D	E	F	
4.50	2.25	1.69	.125	4.000	1.625	
114.30	57.15	42.93	3.18	101.60	41.28	
G	H	J	K			wt
.144	.890	.44	3.50			grams
3.66	22.61	11.18	88.90			500

Features

- high power, up to 12W input power
- low insertion loss, 0.3 dB typ.
- high isolation, 28 dB typ.
- excellent VSWR, 1.18 typ.

Applications

- cellular
- UHF



CASE STYLE: AW256

Connectors	Model	Price	Qty.
SMA	ZB4CS-960-12W-S	\$134.95	(1-9)

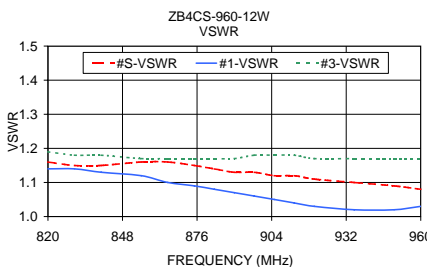
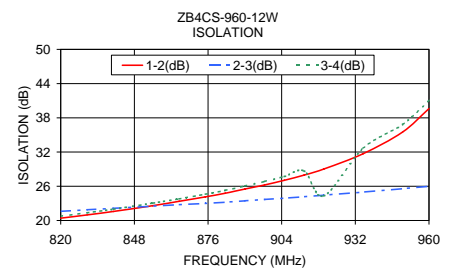
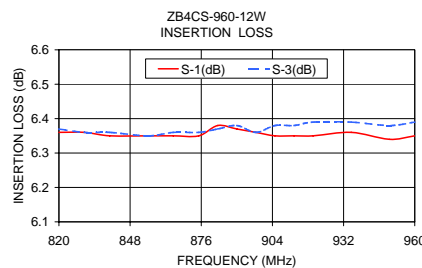
High Power Combiner Electrical Specifications

FREQ. RANGE (MHz)	ISOLATION (dB)		INSERTION LOSS (dB) ABOVE 6.0 dB		PHASE UNBALANCE (Degrees)		AMPLITUDE UNBALANCE (dB)		POWER INPUT ¹ (W)	
	Typ.	Min.	Typ.	Max.	Typ.	Max.	Typ.	Max.	as combiner ² Max.	as splitter Max.
820-960	28	17	0.3	0.8	2.0	6.0	0.2	0.6	12	12

1. Over -55°C to +55°C. Derate linearly to 20% of rating at 90°C
2. As a combiner of non-coherent signals, max. power per port is power rating divided by number of ports.

Typical Performance Data

Freq. (MHz)	Insertion Loss (dB)				Amp. Unbal. (dB)	Isolation (dB)			Phase Unbal. (deg.)	VSWR S	VSWR 1	VSWR 2	VSWR 3	VSWR 4
	S-1	S-2	S-3	S-4		1-2	2-3	3-4						
820.00	6.36	6.43	6.37	6.29	0.14	20.41	21.61	20.77	1.48	1.16	1.14	1.20	1.19	1.13
830.00	6.36	6.44	6.36	6.28	0.16	20.98	21.88	21.36	1.52	1.15	1.14	1.20	1.18	1.13
840.00	6.35	6.43	6.36	6.27	0.16	21.58	22.14	21.98	1.57	1.15	1.13	1.20	1.18	1.12
855.00	6.35	6.43	6.35	6.27	0.16	22.60	22.52	23.05	1.47	1.16	1.12	1.19	1.17	1.12
865.00	6.35	6.44	6.36	6.26	0.18	23.36	22.78	23.79	1.59	1.16	1.10	1.18	1.17	1.11
875.00	6.35	6.45	6.36	6.30	0.16	24.14	23.00	24.62	1.55	1.15	1.09	1.17	1.17	1.11
882.50	6.38	6.45	6.37	6.29	0.16	24.78	23.21	25.29	1.56	1.14	1.08	1.17	1.17	1.11
890.00	6.37	6.46	6.38	6.29	0.17	25.51	23.46	26.05	1.53	1.13	1.07	1.16	1.17	1.11
897.50	6.36	6.44	6.36	6.29	0.15	26.23	23.69	26.85	1.43	1.13	1.06	1.16	1.18	1.11
905.00	6.35	6.45	6.38	6.28	0.17	27.05	23.92	27.71	1.40	1.12	1.05	1.16	1.18	1.11
912.50	6.35	6.45	6.38	6.27	0.17	27.96	24.17	28.69	1.50	1.12	1.04	1.16	1.18	1.12
920.00	6.35	6.46	6.39	6.28	0.18	29.03	24.44	24.32	1.51	1.11	1.03	1.16	1.17	1.12
935.00	6.36	6.45	6.39	6.27	0.17	31.72	24.99	32.67	1.40	1.10	1.02	1.17	1.17	1.12
950.00	6.34	6.45	6.38	6.27	0.18	35.51	25.58	36.85	1.45	1.09	1.02	1.17	1.17	1.12
960.00	6.35	6.45	6.39	6.27	0.18	39.62	26.00	41.10	1.40	1.08	1.03	1.17	1.17	1.12



electrical schematic



Mini-Circuits®
 ISO 9001 ISO 14001 AS 9100 CERTIFIED
 The Design Engineers Search Engine
 Provides ACTUAL Data Instantly at minicircuits.com

For detailed performance specs & shopping online see web site

P.O. Box 350166, Brooklyn, New York 11235-0003 (718) 934-4500 Fax (718) 332-4661

Notes: 1. Performance and quality attributes and conditions not expressly stated in this specification sheet are intended to be excluded and do not form a part of this specification sheet. 2. Electrical specifications and performance data contained herein are based on Mini-Circuit's applicable established test performance criteria and measurement instructions. 3. The parts covered by this specification sheet are subject to Mini-Circuits standard limited warranty and terms and conditions (collectively, "Standard Terms"); Purchasers of this part are entitled to the rights and benefits contained therein. For a full statement of the Standard Terms and the exclusive rights and remedies thereunder, please visit Mini-Circuits' website at www.minicircuits.com/MCLStore/terms.jsp.

REV. OR
 M94385
 ZB4CS-960-12W
 ED-4455
 HY/TD/CP
 090827