

Coaxial High Power Combiner

ZB3CS-920-15W

3 Way-0° 50Ω 825 to 920 MHz

Maximum Ratings

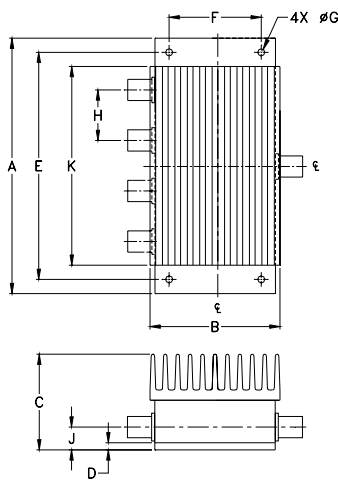
Operating Temperature	-55°C to 90°C
Storage Temperature	-55°C to 100°C

Permanent damage may occur if any of these limits are exceeded.

Coaxial Connections

SUM PORT	S
PORT 1	1
PORT 2	2
PORT 3	3

Outline Drawing



Outline Dimensions (inch/mm)

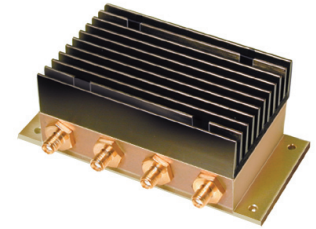
A	B	C	D	E	F	
4.50	2.25	1.69	.125	4.000	1.625	
114.30	57.15	42.93	3.18	101.60	41.28	
G	H	J	K		wt	
.144	.890	.44	3.50		grams	
3.66	22.61	11.18	88.90		500	

Features

- high power, up to 15W input power
- low insertion loss, 0.2 dB typ.
- high isolation, 27 dB typ.

Applications

- cellular
- UHF



CASE STYLE: AW256

Connectors	Model	Price	Qty.
SMA	ZB3CS-920-15W-S	\$114.95	(1-9)

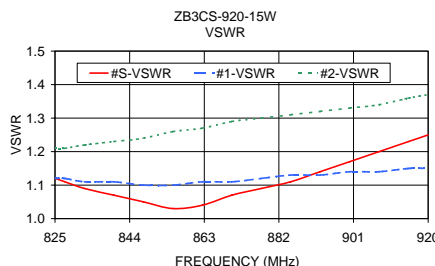
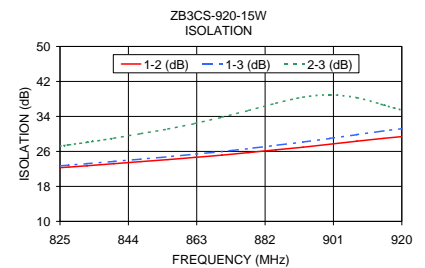
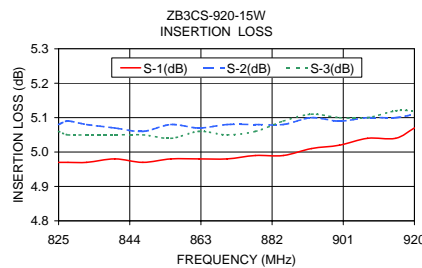
High Power Combiner Electrical Specifications

FREQ. RANGE (MHz)	ISOLATION (dB)		INSERTION LOSS (dB) ABOVE 4.8 dB		PHASE UNBALANCE (Degrees)		AMPLITUDE UNBALANCE (dB)		POWER INPUT ¹ (W)	
	Typ.	Min.	Typ.	Max.	Typ.	Max.	Typ.	Max.	as combiner ² Max.	as splitter Max.
f _L -f _U										
825-920	27	17	0.2	0.8	1.7	6.0	0.11	0.5	15	15

1. Over -55°C to +55°C. Derate linearly to 20% of rating at 90°C
2. As a combiner of non-coherent signals, max. power per port is power rating divided by number of ports.

Typical Performance Data

Freq. (MHz)	Insertion Loss (dB)			Amp. Unbal. (dB)	Isolation (dB)			Phase Unbal. (deg.)	VSWR S	VSWR 1	VSWR 2	VSWR 3
	S-1	S-2	S-3		1-2	1-3	2-3					
825.00	4.97	5.08	5.06	0.11	22.28	22.71	27.23	1.74	1.12	1.12	1.21	1.15
827.50	4.97	5.09	5.05	0.12	22.42	22.87	27.51	1.80	1.11	1.12	1.21	1.15
832.50	4.97	5.08	5.05	0.11	22.72	23.20	28.09	1.73	1.09	1.11	1.22	1.15
840.00	4.98	5.07	5.05	0.10	23.19	23.72	29.03	1.93	1.07	1.11	1.23	1.16
847.50	4.97	5.06	5.05	0.09	23.66	24.25	30.07	1.91	1.05	1.10	1.24	1.16
855.00	4.98	5.08	5.04	0.10	24.12	24.79	31.13	1.92	1.03	1.10	1.26	1.17
862.50	4.98	5.07	5.06	0.09	24.64	25.37	32.39	1.96	1.04	1.11	1.27	1.18
870.00	4.98	5.08	5.05	0.10	25.14	25.97	33.82	2.07	1.07	1.11	1.29	1.18
877.50	4.99	5.08	5.06	0.10	25.73	26.66	35.38	2.09	1.09	1.12	1.30	1.19
885.00	4.99	5.08	5.09	0.10	26.36	27.39	37.01	2.25	1.11	1.13	1.31	1.20
892.50	5.01	5.10	5.11	0.09	26.95	28.14	38.41	2.34	1.14	1.13	1.32	1.20
900.00	5.02	5.09	5.10	0.07	27.64	28.98	38.93	2.42	1.17	1.14	1.33	1.21
907.50	5.04	5.10	5.10	0.06	28.34	29.85	38.29	2.38	1.20	1.14	1.34	1.21
915.00	5.04	5.10	5.12	0.08	28.99	30.71	36.60	2.45	1.23	1.15	1.36	1.22
920.00	5.07	5.11	5.12	0.06	29.38	31.21	35.47	2.53	1.25	1.15	1.37	1.22



electrical schematic



Mini-Circuits®
ISO 9001 ISO 14001 AS 9100 CERTIFIED

P.O. Box 350166, Brooklyn, New York 11235-0003 (718) 934-4500 Fax (718) 332-4661 The Design Engineers Search Engine Provides ACTUAL Data Instantly at minicircuits.com

IFIRF MICROWAVE COMPONENTS

For detailed performance specs & shopping online see web site

Notes: 1. Performance and quality attributes and conditions not expressly stated in this specification sheet are intended to be excluded and do not form a part of this specification sheet. 2. Electrical specifications and performance data contained herein are based on Mini-Circuit's applicable established test performance criteria and measurement instructions. 3. The parts covered by this specification sheet are subject to Mini-Circuits standard limited warranty and terms and conditions (collectively, "Standard Terms"); Purchasers of this part are entitled to the rights and benefits contained therein. For a full statement of the Standard Terms and the exclusive rights and remedies thereunder, please visit Mini-Circuits' website at www.minicircuits.com/MCLStore/terms.jsp.

REV. OR
M94385
ZB3CS-920-15W
ED-4679
HY/TD/CP
090827