

# Coaxial Power Splitter/Combiner

## ZB16PD-72+

16 Way-0° 50Ω 400 to 700 MHz



### Maximum Ratings

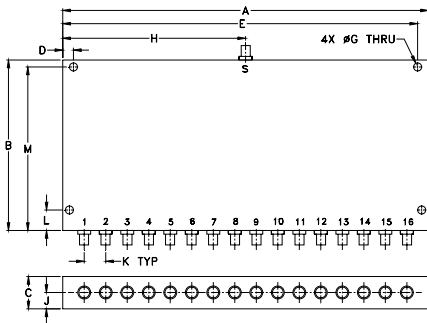
Operating Temperature	-55°C to 100°C
Storage Temperature	-55°C to 100°C
Power Input (as a splitter)	10W max.
Internal Dissipation	2W max.

Permanent damage may occur if any of these limits are exceeded.

### Coaxial Connections

SUMPORT	S
PORT 1,2,3,.....16	1,2,3,.....16

### Outline Drawing



### Outline Dimensions (inch/mm)

A	B	C	D	E	F	G
11.00	4.00	.88	.250	10.75	--	.187
279.40	101.60	22.35	6.35	273.05	--	4.75
H	J	K	L	M	wt	
5.50	.44	.66	.25	3.75	grams	
139.70	11.18	16.76	6.35	95.25	1130	

### Features

- low insertion loss, 0.7 dB typ.
- excellent input VSWR, 1.10:1 typ.
- excellent output VSWR, 1.05:1 typ.
- very high isolation, 30 dB typ.

### Applications

- UHF TV/DTV
- CDMA
- GSM

CASE STYLE: UU573

Connectors	Model	Price	Qty.
SMA	ZB16PD-72-S+	\$259.95 ea.	(1-9)

+ RoHS compliant in accordance with EU Directive (2002/95/EC)

The +Suffix has been added in order to identify RoHS Compliance. See our web site for RoHS Compliance methodologies and qualifications.

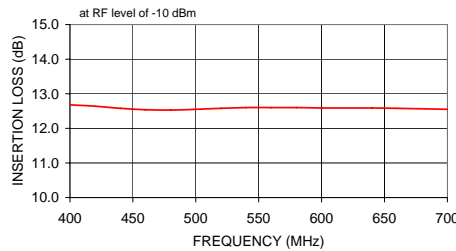
### Electrical Specifications

FREQ. RANGE (MHz)	ISOLATION (dB)		INSERTION LOSS (dB) ABOVE 12 dB		PHASE UNBALANCE (Degrees)	AMPLITUDE UNBALANCE (dB)	VSWR (:1)			
	Typ.	Min.	Typ.	Max.			S		OUT	
$f_L - f_U$					Max.	Max.	Typ.	Max.	Typ.	Max.
400-700	30	20	0.7	1.4	8	0.6	1.10	1.6	1.05	1.3

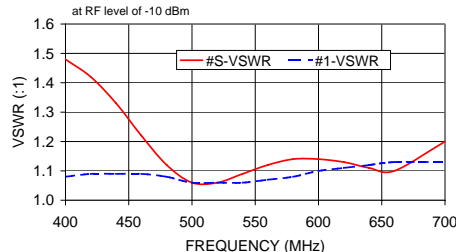
### Typical Performance Data

Frequency (MHz)	Insertion Loss (dB)	Amplitude Unbalance (dB)	Isolation (dB)		Phase Unbalance (deg.)	VSWR S	VSWR OUT
			1-2	2-3			
400.00	12.68	0.42	25.02	24.04	2.57	1.48	1.08
420.00	12.64	0.23	29.43	27.87	2.65	1.42	1.09
440.00	12.58	0.13	38.18	34.59	2.86	1.33	1.09
460.00	12.54	0.17	36.71	38.65	2.93	1.22	1.09
480.00	12.53	0.29	29.48	30.86	2.98	1.12	1.08
500.00	12.55	0.35	26.03	26.96	3.84	1.06	1.06
520.00	12.58	0.35	24.14	24.85	5.03	1.06	1.06
540.00	12.60	0.26	23.12	23.71	6.03	1.09	1.06
560.00	12.60	0.20	22.68	23.18	6.44	1.12	1.07
580.00	12.60	0.18	22.65	23.09	6.43	1.14	1.08
600.00	12.59	0.24	22.97	23.35	5.92	1.14	1.10
620.00	12.59	0.29	23.59	23.90	5.19	1.13	1.11
640.00	12.59	0.34	24.50	24.71	4.74	1.11	1.12
660.00	12.58	0.38	25.65	25.69	4.55	1.10	1.13
700.00	12.55	0.45	27.60	26.84	4.97	1.20	1.13

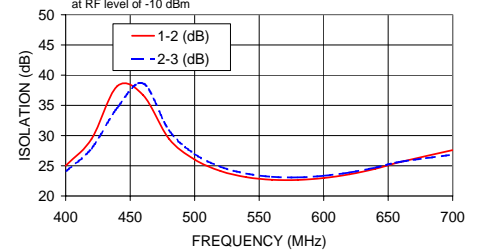
ZB16PD-72+ INSERTION LOSS



ZB16PD-72+ VSWR



ZB16PD-72+ ISOLATION



### electrical schematic



**Mini-Circuits**  
 ISO 9001 ISO 14001 AS 9100 CERTIFIED  
 The Design Engineers Search Engine Provides ACTUAL Data Instantly at [minicircuits.com](http://minicircuits.com)  
 IF/RF MICROWAVE COMPONENTS

For detailed performance specs & shopping online see web site

P.O. Box 350166, Brooklyn, New York 11235-0003 (718) 934-4500 Fax (718) 332-4661

Notes: 1. Performance and quality attributes and conditions not expressly stated in this specification sheet are intended to be excluded and do not form a part of this specification sheet. 2. Electrical specifications and performance data contained herein are based on Mini-Circuit's applicable established test performance criteria and measurement instructions. 3. The parts covered by this specification sheet are subject to Mini-Circuits standard limited warranty and terms and conditions (collectively, "Standard Terms"); Purchasers of this part are entitled to the rights and benefits contained therein. For a full statement of the Standard Terms and the exclusive rights and remedies thereunder, please visit Mini-Circuits' website at [www.minicircuits.com/MCLStore/terms.jsp](http://www.minicircuits.com/MCLStore/terms.jsp).

REV. OR  
 M106317  
 ED-7000/1  
 ZB16PD-72+  
 HY/TD/CP  
 090827