

# Coaxial Frequency Mixer

Level 23 (LO Power +23 dBm) 5 to 500 MHz

## ZAY-1+



CASE STYLE: M22

### Maximum Ratings

Operating Temperature	-55°C to 100°C
Storage Temperature	-55°C to 100°C
RF Power	350mW
IF Current	40mA

### Coaxial Connections

LO	1
RF	3
IF	2

### Features

- low conversion loss, 6.57 dB typ.
- high L-R isolation, 40 dB typ. L-R & L-L
- rugged shielded case

### Applications

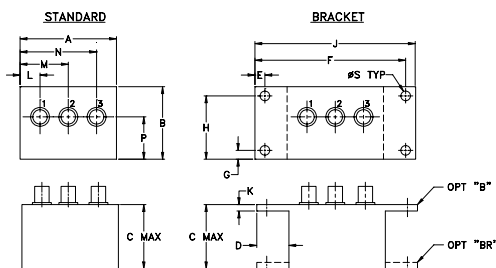
- VHF/UHF
- instrumentation
- federal & defense communication

Connectors	Model	Price	Qty.
BNC	ZAY-1+	\$64.95	(1-9)
<b>BRACKET (OPTION "B")</b>			
		\$5.00	(1+)
<b>BRACKET (OPTION "BR")</b>			
		\$1.50	(1+)

**+ RoHS compliant in accordance with EU Directive (2002/95/EC)**

The +Suffix has been added in order to identify RoHS Compliance. See our web site for RoHS Compliance methodologies and qualifications.

### Outline Drawing



### Outline Dimensions (inch/mm)

A	B	C	D	E	F	G	H
2.25	1.38	1.24	.50	.150	3.100	.138	1.238
57.15	35.05	31.50	12.70	3.81	78.74	3.51	31.45

J	K	L	M	N	P	S	wt
3.25	.10	.40	1.15	1.86	.64	.150	grams
82.55	2.54	10.16	29.21	47.24	16.26	3.81	74.0

### Electrical Specifications

FREQUENCY (MHz)		CONVERSION LOSS (dB)				LO-RF ISOLATION (dB)						LO-IF ISOLATION (dB)					
LO/RF	IF	Mid-Band		Total Range		L		M		U		L		M		U	
$f_L-f_U$	$\bar{X}$	Max.	Max.	Max.	Max.	Typ.	Min.	Typ.	Min.	Typ.	Min.	Typ.	Min.	Typ.	Min.	Typ.	Min.
5-500	DC-500	6.57	0.9	7.5	8.5	55	45	40	30	30	25	55	45	40	30	30	20

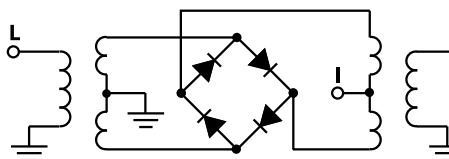
1 dB COMP.: +15 dBm typ.

L = low range [ $f_L$  to  $10 f_L$ ] M = mid range [ $10 f_L$  to  $f_U$ ] U = upper range [ $f_U/2$  to  $f_U$ ]  
 m = mid band [ $2f_L$  to  $f_U/2$ ]

### Typical Performance Data

Frequency (MHz)		Conversion Loss (dB)	Isolation L-R (dB)	Isolation L-I (dB)	VSWR RF Port (:1)	VSWR LO Port (:1)
RF	LO	LO +23dBm	LO +23dBm	LO +23dBm	LO +23dBm	LO +23dBm
5.00	35.00	6.52	57.02	82.02	1.29	2.50
10.00	40.00	6.40	56.72	82.32	1.14	2.37
20.00	50.00	6.40	54.48	81.28	1.06	2.33
35.94	65.94	6.43	51.51	75.99	1.05	2.31
50.00	80.00	6.40	48.82	72.57	1.07	2.37
82.35	52.35	6.39	45.62	62.91	1.08	2.20
100.00	70.00	6.36	44.05	58.66	1.10	2.25
144.22	114.22	6.53	41.60	53.71	1.12	2.11
175.16	145.16	6.68	40.04	51.38	1.14	2.25
200.00	170.00	6.69	39.45	50.73	1.16	2.06
221.57	191.57	6.52	36.41	46.45	1.18	2.17
252.50	222.50	6.52	36.33	47.23	1.20	2.04
283.44	253.44	6.64	36.36	47.98	1.22	2.10
314.38	284.38	6.74	36.35	46.73	1.24	1.96
345.32	315.32	6.62	33.85	44.99	1.26	2.04
376.26	346.26	6.50	30.50	41.75	1.29	1.96
407.19	377.19	6.43	32.89	42.28	1.31	1.95
438.13	408.13	6.50	33.81	42.66	1.35	1.90
469.07	439.07	6.81	33.63	41.41	1.38	1.87
500.00	470.00	6.62	34.24	40.42	1.44	1.83

### Electrical Schematic



**Mini-Circuits®**  
 ISO 9001 ISO 14001 AS 9100 CERTIFIED

**minicircuits.com**

P.O. Box 350166, Brooklyn, New York 11235-0003 (718) 934-4500 Fax (718) 332-4661 For detailed performance specs & shopping online see Mini-Circuits web site

**The Design Engineers Search Engine** Provides ACTUAL Data Instantly From MINI-CIRCUITS At: [www.minicircuits.com](http://www.minicircuits.com)

IF/RF MICROWAVE COMPONENTS

REV. B  
 M121747  
 ZAY-1+  
 DJ/TD/CP/AM  
 090422  
 Page 1 of 2

