

Coaxial Power Splitter/Combiner

2 Way-90° 50Ω 1000 to 2000 MHz

ZAPDQ-2



SMA version shown
CASE STYLE: F14

Connectors	Model	Price	Qty.
N-TYPE	ZAPDQ-2-N	\$84.95	(1-9)
SMA	ZAPDQ-2-S	\$84.95	(1-9)

Maximum Ratings

Operating Temperature	-55°C to 100°C
Storage Temperature	-55°C to 100°C
Power Input (as a splitter)	1W max.
Internal Dissipation	0.125W max.

Permanent damage may occur if any of these limits are exceeded.

Pin Connections

SUM PORT	S
PORT 1 (0°)	1
PORT 2 (+90°)	3

Features

- low insertion loss, 0.4 dB typ.
- good isolation, 22 dB typ.
- rugged shielded case

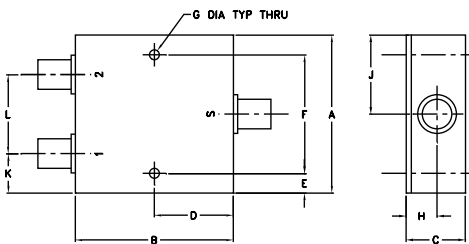
Applications

- balanced amplifiers
- modulators
- test set-ups

Electrical Specifications

FREQ. RANGE (MHz)	ISOLATION (dB)	INSERTION LOSS (dB) Avg. of Coupled Outputs less 3 dB	PHASE UNBALANCE (Degrees)	AMPLITUDE UNBALANCE (dB)
f_L - f_U	Typ. Min.	Typ. Max.	Max.	Max.
1000-2000	22 16	0.4 1.4	6.0	0.8

Outline Drawing

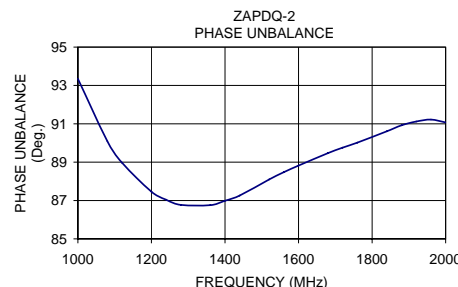
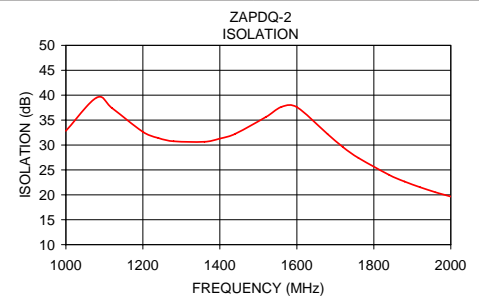
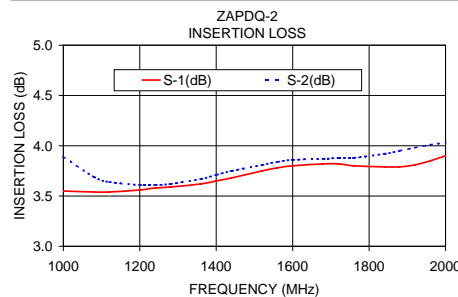


Outline Dimensions (inch/mm)

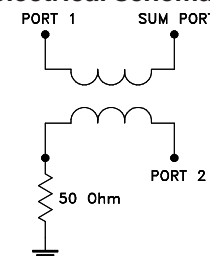
A	B	C	D	E	F	G
2.00	2.00	0.75	1.00	0.25	1.500	0.125
50.80	50.80	19.05	25.40	6.35	38.10	3.18
H	J	K	L	wt		
0.39	1.00	0.50	1.00	grams		
9.91	25.40	12.70	25.40	170.0		

Typical Performance Data

Frequency (MHz)	Insertion Loss (dB)		Amplitude Unbalance (dB)	Isolation (dB)	Phase Unbalance (deg.)	VSWR S	VSWR 1	VSWR 2
	S-1	S-2						
1000.00	3.55	3.89	0.34	32.84	93.35	1.48	1.21	1.78
1080.00	3.54	3.69	0.15	39.51	90.09	1.32	1.20	1.50
1120.00	3.54	3.64	0.10	37.41	88.97	1.30	1.19	1.41
1200.00	3.56	3.61	0.05	32.65	87.46	1.27	1.18	1.33
1280.00	3.59	3.62	0.03	30.75	86.77	1.23	1.18	1.34
1360.00	3.62	3.67	0.05	30.65	86.76	1.27	1.19	1.41
1440.00	3.68	3.75	0.06	32.25	87.26	1.35	1.23	1.50
1520.00	3.75	3.81	0.06	35.64	88.10	1.34	1.28	1.56
1600.00	3.80	3.86	0.05	37.60	88.82	1.35	1.33	1.57
1680.00	3.82	3.87	0.05	32.19	89.47	1.34	1.36	1.52
1720.00	3.82	3.88	0.06	29.57	89.76	1.28	1.36	1.48
1840.00	3.79	3.92	0.14	23.99	90.61	1.11	1.29	1.39
1880.00	3.79	3.95	0.16	22.66	90.92	1.14	1.24	1.40
1920.00	3.81	3.98	0.16	21.53	91.12	1.22	1.19	1.42
2000.00	3.90	4.03	0.14	19.65	91.07	1.42	1.10	1.42



electrical schematic



For detailed performance specs & shipping online see web site

Mini-Circuits®
ISO 9001 ISO 14001 AS 9100 CERTIFIED
The Design Engineers Search Engine Provides ACTUAL Data Instantly at minicircuits.com

P.O. Box 350166, Brooklyn, New York 11235-0003 (718) 934-4500 Fax (718) 332-4661

Notes: 1. Performance and quality attributes and conditions not expressly stated in this specification sheet are intended to be excluded and do not form a part of this specification sheet. 2. Electrical specifications and performance data contained herein are based on Mini-Circuit's applicable established test performance criteria and measurement instructions. 3. The parts covered by this specification sheet are subject to Mini-Circuits standard limited warranty and terms and conditions (collectively, "Standard Terms"); Purchasers of this part are entitled to the rights and benefits contained therein. For a full statement of the Standard Terms and the exclusive rights and remedies thereunder, please visit Mini-Circuits' website at www.minicircuits.com/MCLStore/terms.jsp.

REV. OR
M98046
ZAPDQ-2
HY/TD/CP
090824