

Coaxial

Power Splitter/Combiner

ZAPDJ-2

2 Way-180° 50Ω 1000 to 2000 MHz



SMA version shown
CASE STYLE: F53

Maximum Ratings

Operating Temperature	-55°C to 100°C
Storage Temperature	-55°C to 100°C
Power Input (as a splitter)	1W max.
Internal Dissipation	0.125W max.

Permanent damage may occur if any of these limits are exceeded.

Coaxial Connections

SUM PORT	S
PORT 1	1
PORT 2	2

Features

- low insertion loss, 1.3 dB typ.
- good isolation, 22 dB typ.
- excellent amplitude unbalance, 0.8 dB typ.
- rugged shielded case

Applications

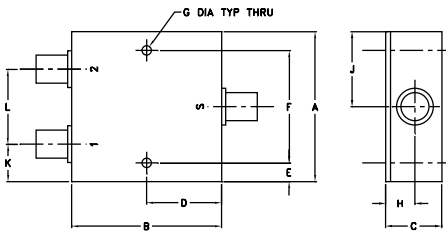
- GPS
- satellite distribution
- signal processing

Connectors	Model	Price	Qty.
BNC	ZAPDJ-2	\$76.95	(1-9)
SMA	ZAPDJ-2-S	\$81.95	(1-9)
N-TYPE	ZAPDJ-2-N	\$81.95	(1-9)

Electrical Specifications

FREQ. RANGE (MHz)	ISOLATION (dB)		INSERTION LOSS (dB) ABOVE 3.0 dB		PHASE UNBALANCE (Degrees)	AMPLITUDE UNBALANCE (dB)
	Typ.	Min.	Typ.	Max.	Max.	Max.
f_L - f_U						
1000-2000	22	18	1.3	1.8	6	0.8

Outline Drawing



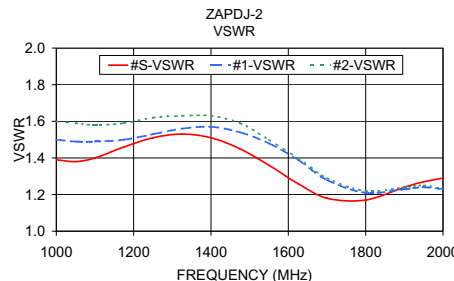
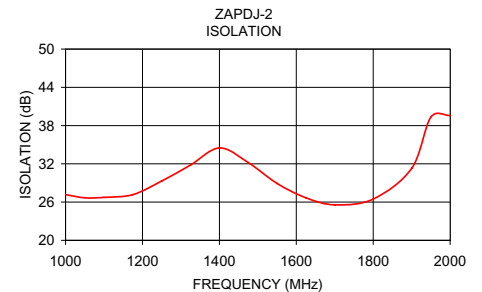
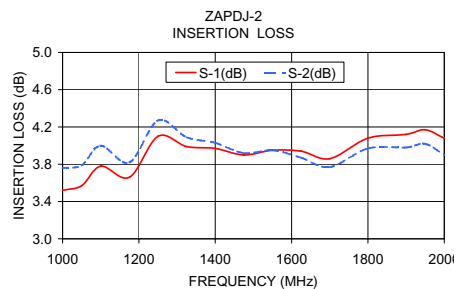
Outline Dimensions (inch/mm)

A	B	C	D	E	F	G
2.00	2.00	.75	1.00	.13	1.750	.125
50.80	50.80	19.05	25.40	3.30	44.45	3.18

H	J	K	L	wt grams
.39	1.00	.50	1.00	170.0
9.91	25.40	12.70	25.40	

Typical Performance Data

Frequency (MHz)	Insertion Loss (dB)		Amplitude Unbalance (dB)	Isolation (dB)	Phase Unbalance (deg.)	VSWR S	VSWR 1	VSWR 2
	S-1	S-2						
1000.00	3.52	3.76	0.24	27.17	181.64	1.39	1.50	1.60
1050.00	3.57	3.79	0.23	26.67	181.56	1.38	1.49	1.59
1100.00	3.78	4.00	0.22	26.74	181.90	1.40	1.49	1.58
1175.00	3.66	3.82	0.16	27.17	181.57	1.46	1.50	1.59
1250.00	4.10	4.27	0.16	29.31	181.62	1.51	1.53	1.62
1325.00	3.99	4.09	0.09	31.81	178.45	1.53	1.56	1.63
1400.00	3.97	4.03	0.06	34.50	178.65	1.51	1.57	1.63
1475.00	3.90	3.92	0.01	32.19	178.75	1.45	1.54	1.59
1550.00	3.95	3.95	0.00	28.92	178.85	1.36	1.48	1.50
1625.00	3.94	3.87	0.07	26.67	178.83	1.26	1.39	1.40
1700.00	3.86	3.77	0.09	25.57	179.11	1.18	1.28	1.29
1800.00	4.08	3.97	0.11	26.47	179.21	1.17	1.21	1.22
1900.00	4.12	3.98	0.14	31.30	180.54	1.24	1.23	1.24
1950.00	4.17	4.02	0.15	39.34	180.43	1.27	1.24	1.25
2000.00	4.08	3.90	0.17	39.57	180.35	1.29	1.23	1.23



electrical schematic



Mini-Circuits®
ISO 9001 ISO 14001 AS 9100 CERTIFIED

minicircuits.com

P.O. Box 350166, Brooklyn, New York 11235-0003 (718) 934-4500 Fax (718) 332-4661 For detailed performance specs & shopping online see Mini-Circuits web site



The Design Engineers Search Engine Provides ACTUAL Data Instantly From MINI-CIRCUITS At: www.minicircuits.com

REV. OR
M94845
ZAPDJ-2
HY/TD/CP
080714

IF/RF MICROWAVE COMPONENTS