

Coaxial

Power Splitter/Combiner

ZAPD-50W+

2 Way-0° 50Ω 4200 to 6000 MHz

Maximum Ratings

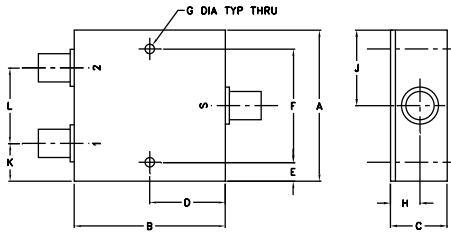
Operating Temperature	-55°C to 100°C
Storage Temperature	-55°C to 100°C
Power Input (as a splitter)	10W max.
Internal Dissipation	0.125W max.

Permanent damage may occur if any of these limits are exceeded.

Coaxial Connections

SUM PORT	S
PORT 1	1
PORT 2	2

Outline Drawing



Outline Dimensions (inch/mm)

A	B	C	D	E	F	G
2.00	2.00	0.75	1.00	0.25	1.500	0.125
50.80	50.80	19.05	25.40	6.35	38.10	3.18
H	J	K	L	wt		
0.39	1.00	0.50	1.00	grams		
9.91	25.40	12.70	25.40	170.0		

Features

- low insertion loss, 0.3 dB typ.
- good isolation, 26 dB typ.
- up to 10W power input as splitter
- excellent amplitude unbalance, 0.1 dB typ.
- excellent phase unbalance, 1 deg. typ.
- excellent VSWR, 1.15:1 typ.
- rugged shielded case

Applications

- wireless
- defense
- communications



CASE STYLE: F14

Connectors	Model	Price	Qty.
N-TYPE	ZAPD-50W-N+	\$69.95	(1-9)

+ RoHS compliant in accordance with EU Directive (2002/95/EC)

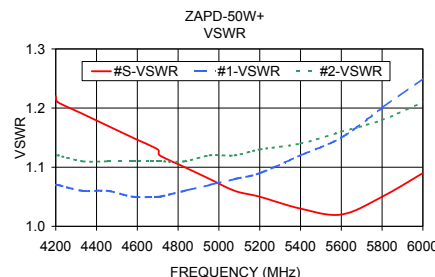
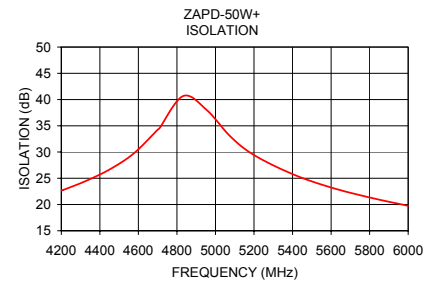
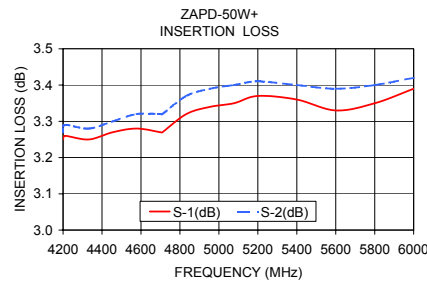
The +Suffix has been added in order to identify RoHS Compliance. See our web site for RoHS Compliance methodologies and qualifications.

Electrical Specifications

FREQ. RANGE (MHz)	ISOLATION (dB)		INSERTION LOSS (dB) ABOVE 3.0 dB		PHASE UNBALANCE (Degrees)	AMPLITUDE UNBALANCE (dB)	VSWR (:1)			
	Typ.	Min.	Typ.	Max.			S		OUT	
$f_L - f_U$					Max.	Max.	Typ.	Max.	Typ.	Max.
4200-6000	26	16	0.3	0.8	5	0.7	—	—	—	—

Typical Performance Data

Frequency (MHz)	Insertion Loss (dB)		Amplitude Unbalance (dB)	Isolation (dB)	VSWR S	VSWR 1	VSWR 2
	S-1	S-2					
4200.00	3.25	3.27	0.02	22.67	1.22	1.07	1.12
4210.00	3.26	3.29	0.03	22.77	1.21	1.07	1.12
4332.50	3.25	3.28	0.03	24.57	1.19	1.06	1.11
4455.00	3.27	3.30	0.04	26.77	1.17	1.06	1.11
4577.50	3.28	3.32	0.04	29.78	1.15	1.05	1.11
4700.00	3.27	3.32	0.05	34.24	1.13	1.05	1.11
4710.00	3.27	3.32	0.06	34.56	1.12	1.05	1.11
4832.50	3.32	3.37	0.05	40.68	1.10	1.06	1.11
4955.00	3.34	3.39	0.05	37.99	1.08	1.07	1.12
5077.50	3.35	3.40	0.05	32.96	1.06	1.08	1.12
5200.00	3.37	3.41	0.04	29.43	1.05	1.09	1.13
5400.00	3.36	3.40	0.04	25.79	1.03	1.12	1.14
5600.00	3.33	3.39	0.06	23.24	1.02	1.15	1.16
5800.00	3.35	3.40	0.06	21.34	1.05	1.20	1.18
6000.00	3.39	3.42	0.04	19.75	1.09	1.25	1.21



electrical schematic



Mini-Circuits
ISO 9001 ISO 14001 AS 9100 CERTIFIED

P.O. Box 350166, Brooklyn, New York 11235-0003 (718) 934-4500 Fax (718) 332-4661 The Design Engineers Search Engine Provides ACTUAL Data Instantly at minicircuits.com

For detailed performance specs & shopping online see web site

Notes: 1. Performance and quality attributes and conditions not expressly stated in this specification sheet are intended to be excluded and do not form a part of this specification sheet. 2. Electrical specifications and performance data contained herein are based on Mini-Circuit's applicable established test performance criteria and measurement instructions. 3. The parts covered by this specification sheet are subject to Mini-Circuits standard limited warranty and terms and conditions (collectively, "Standard Terms"); Purchasers of this part are entitled to the rights and benefits contained therein. For a full statement of the Standard Terms and the exclusive rights and remedies thereunder, please visit Mini-Circuits' website at www.minicircuits.com/MCLStore/terms.jsp.

REV. B
M121747
ZAPD-50W+
HY/TD/CP/AM
091019