

DC Pass Directional Coupler

ZADC-17-14HP

50Ω

500 to 1350 MHz



CASE STYLE: F14

Connectors	Model	Price	Qty.
SMA	ZADC-17-14HP-S	\$59.95 ea.	(1-9)

Maximum Ratings

Operating Temperature	-55°C to 100°C
Storage Temperature	-55°C to 100°C
DC Current	0.25A

Permanent damage may occur if any of these limits are exceeded.

Coaxial Connections

INPUT	S
OUTPUT	1
COUPLED	2

Features

- excellent mainline loss, 0.8 dB typ.
- excellent VSWR, 1.06:1 typ.
- useable over 300-2000 MHz
- input power up to 10W
- protected by US Patents 7,049,905 & 7,218,186
- DC current through input to output 0.25A Max. at 1.0 watt RF input power.

Applications

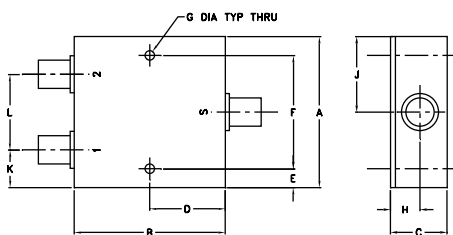
- cellular
- VHF/UHF
- instrumentation

Directional Coupler Electrical Specifications

FREQ. RANGE (MHz)	COUPLING (dB)		MAINLINE LOSS ¹ (dB)		DIRECTIVITY (dB)		VSWR (:1)	POWER INPUT (W)
	Nom.	Flatness	Typ.	Max.	Typ.	Min.		
f_L - f_U								
500-1350	16.4±0.9	±1.3	0.8	1.5	29	16	1.06	10
800-1000	15.5±0.7	±0.5	0.8	1.3	30	20	1.06	10

1. Mainline loss includes theoretical power loss at coupled port.

Outline Drawing

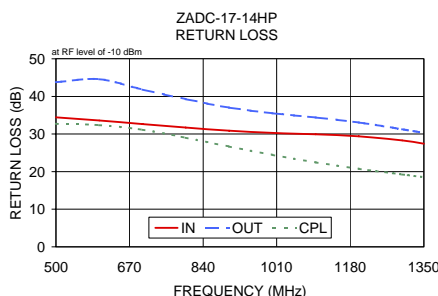
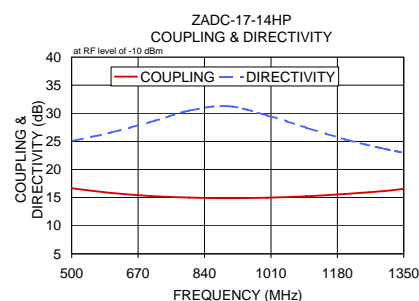
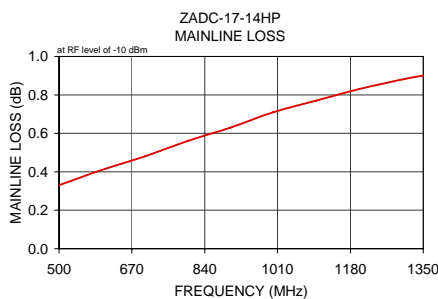


Outline Dimensions (inch/mm)

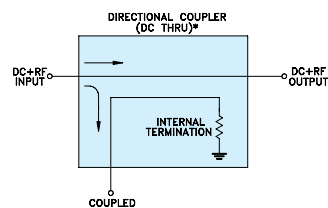
A	B	C	D	E	F	G
2.00	2.00	.75	1.00	.25	1.500	.125
50.80	50.80	19.05	25.40	6.35	38.10	3.18
H	J	K	L	wt		
.39	1.00	.50	1.00	grams		
9.91	25.40	12.70	25.40	170.0		

Typical Performance Data

Frequency (MHz)	Mainline Loss (dB) In-Out	Coupling (dB) In-Cpl	Directivity (dB)	Return Loss (dB)		
				In	Out	Cpl
500.00	0.33	16.67	25.05	34.42	43.77	32.71
600.00	0.41	15.83	26.57	33.61	44.58	32.35
700.00	0.48	15.29	28.41	32.64	41.80	31.15
800.00	0.56	15.00	30.45	31.71	39.27	29.02
900.00	0.63	14.89	31.26	30.89	37.02	26.67
1000.00	0.71	14.97	29.63	30.32	35.50	24.44
1100.00	0.77	15.23	27.45	29.92	34.41	22.44
1200.00	0.83	15.64	25.34	29.39	33.05	20.73
1300.00	0.88	16.17	23.70	28.28	31.24	19.22
1350.00	0.90	16.55	23.01	27.42	30.31	18.54



Electrical Schematic



* ELECTRICAL SCHEMATIC FOR DIRECTIONAL COUPLER THAT IS DESIGNED WITHOUT INTERNAL TRANSFORMERS.

For detailed performance specs & shopping online see web site

Mini-Circuits
 ISO 9001 ISO 14001 AS 9100 CERTIFIED
 The Design Engineers Search Engine
 IFR/RF MICROWAVE COMPONENTS

P.O. Box 350166, Brooklyn, New York 11235-0003 (718) 934-4500 Fax (718) 332-4661 The Design Engineers Search Engine Provides ACTUAL Data Instantly at minicircuits.com

Notes: 1. Performance and quality attributes and conditions not expressly stated in this specification sheet are intended to be excluded and do not form a part of this specification sheet. 2. Electrical specifications and performance data contained herein are based on Mini-Circuit's applicable established test performance criteria and measurement instructions. 3. The parts covered by this specification sheet are subject to Mini-Circuits standard limited warranty and terms and conditions (collectively, "Standard Terms"); Purchasers of this part are entitled to the rights and benefits contained therein. For a full statement of the Standard Terms and the exclusive rights and remedies thereunder, please visit Mini-Circuits' website at www.minicircuits.com/MCLStore/terms.jsp.

REV. C
 M119986
 ED-9391/2
 ZADC-17-14HP
 LC/TD/CP/AM
 090915