

DC Pass Directional Coupler

50Ω Up to 4W 2500 to 6000 MHz

ZADC-10-63+



CASE STYLE: CC1266

Connectors	Model	Price	Qty.
SMA	ZADC-10-63-S+	\$49.95 ea.	(1-9)

+RoHS Compliant

The +Suffix identifies RoHS Compliance. See our web site for RoHS Compliance methodologies and qualifications

Maximum Ratings

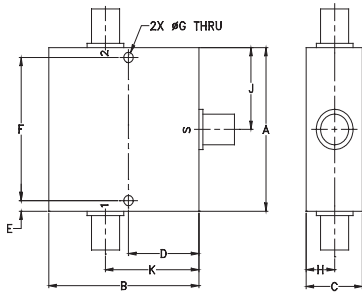
Operating Temperature	-55°C to 100°C
Storage Temperature	-55°C to 100°C
DC Current	1.0A

Permanent damage may occur if any of these limits are exceeded.

Coaxial Connections

INPUT	1
OUTPUT	3
COUPLED	2

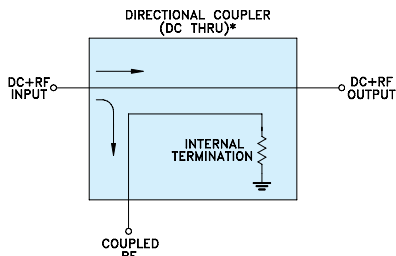
Outline Drawing



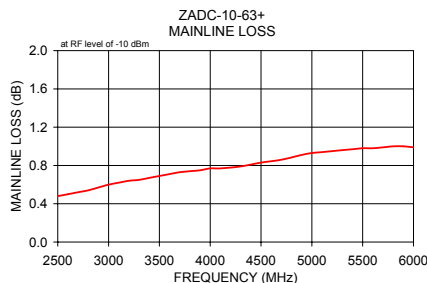
Outline Dimensions (inch/mm)

A	B	C	D	E	F
2.00	2.00	.75	.938	.13	1.750
50.80	50.80	19.05	23.83	3.30	44.45
G	H	J	K	wt	
.125	.38	1.00	1.25	grams	
3.18	9.65	25.40	31.75	200.0	

Electrical Schematic



* ELECTRICAL SCHEMATIC FOR DIRECTIONAL COUPLER THAT IS DESIGNED WITHOUT INTERNAL TRANSFORMERS.



Features

- excellent directivity, 20 dB typ.
- good VSWR, 1.40 typ.
- power input up to 4W
- low cost
- DC current through input to output 1.0A Max.

Applications

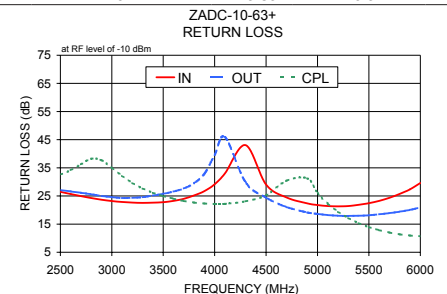
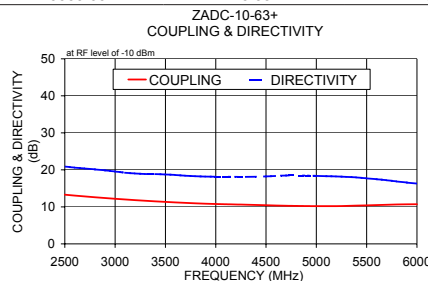
- instrumentation
- ISM
- defense communications
- federal communications
- fixed satellite

Electrical Specifications at 25°C

Parameter	Condition (MHz)	Min.	Typ.	Max.	Unit
Frequency Range		2500	—	6000	MHz
Mainline Loss (above theoretical 0.3 dB)	2500	—	0.2	0.7	dB
	3500	—	0.4	0.9	
	5000	—	0.6	1.1	
	6000	—	0.7	1.2	
	2500 - 6000	—	11.7	—	
Coupling	2500	12.4	13.4	15.0	dB
	3500	10.4	11.4	12.5	
	5000	9.3	10.3	11.3	
	6000	9.7	10.7	11.7	
	2500 - 6000	—	11.7	—	
Coupling Flatness (±)	2500 - 3500	—	1.0	1.5	dB
	3500 - 5000	—	0.6	1.0	
	5000 - 6000	—	0.3	0.8	
Directivity	2500	17	23.0	—	dB
	3500	13	21.8	—	
	5000	12	20.6	—	
	6000	10	16.6	—	
Return Loss (Input)	2500	20	30	—	dB
	3500	18	25	—	
	5000	15	22	—	
	6000	15	22	—	
Return Loss (Output)	2500	19	31	—	dB
	3500	18	29	—	
	5000	14	19	—	
	6000	14	19	—	
Return Loss (Coupling)	2500	19	32	—	dB
	3500	18	27	—	
	5000	14	25	—	
	6000	8	11	—	
Input Power	2500 - 6000	—	—	4.0	W

Typical Performance Data

Frequency (MHz)	Mainline Loss (dB) In-Out	Coupling (dB) In-Cpl	Directivity (dB)	Return Loss (dB)		
				In	Out	Cpl
2500.00	0.48	13.28	20.90	26.47	27.12	32.61
2800.00	0.54	12.59	20.13	24.27	25.60	38.24
3000.00	0.60	12.19	19.55	23.20	24.58	35.00
3500.00	0.69	11.34	18.75	22.79	25.76	24.94
4000.00	0.77	10.78	18.15	29.15	39.56	22.16
4500.00	0.83	10.44	18.22	29.05	24.41	25.25
5000.00	0.93	10.19	18.37	21.78	18.62	26.09
5500.00	0.98	10.41	17.71	22.43	18.14	13.93
5800.00	1.00	10.64	16.88	25.73	19.41	11.34
6000.00	0.99	10.71	16.27	29.59	20.91	10.70



Notes

- Performance and quality attributes and conditions not expressly stated in this specification document are intended to be excluded and do not form a part of this specification document.
- Electrical specifications and performance data contained in this specification document are based on Mini-Circuit's applicable established test performance criteria and measurement instructions.
- The parts covered by this specification document are subject to Mini-Circuit's standard limited warranty and terms and conditions (collectively, "Standard Terms"); Purchasers of this part are entitled to the rights and benefits contained therein. For a full statement of the Standard Terms and the exclusive rights and remedies thereunder, please visit Mini-Circuit's website at www.minicircuits.com/WCLStore/terms.jsp



www.minicircuits.com P.O. Box 350166, Brooklyn, NY 11235-0003 (718) 934-4500 sales@minicircuits.com

REV. OR
M130595
ED-12951C/1
ZADC-10-63+
WP/CP/AM
131017
Page 1 of 1