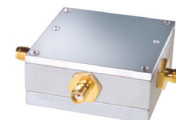


DC Pass Directional Coupler

50Ω Up to 5W 800 to 1900 MHz

ZADC-10-17W+ ZADC-10-17W



Maximum Ratings

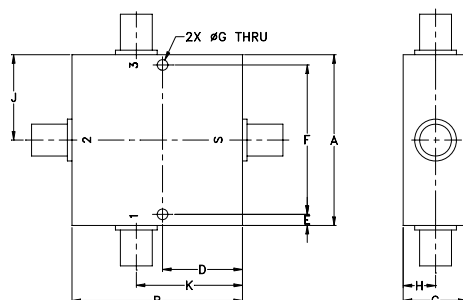
Operating Temperature	-55°C to 100°C
Storage Temperature	-55°C to 100°C
DC Current	1.0A

Permanent damage may occur if any of these limits are exceeded.

Coaxial Connections

INPUT	1
OUTPUT	3
COUPLED	2

Outline Drawing



Outline Dimensions (inch/mm)

A	B	C	D	E	F
2.00	2.00	.75	.938	.13	1.750
50.80	50.80	19.05	23.83	3.30	44.45
G	H	J	K	wt	
.125	.38	1.00	1.25	grams	
3.18	9.65	25.40	31.75	200.0	

Features

- low mainline loss, 0.8 dB typ.
- excellent directivity, 24 dB typ.
- power input up to 5W
- DC Current through input to output 1.0A Max.

Applications

- GSM
- PCN
- instrumentation
- cellular

CASE STYLE: CC51			
Connectors	Model	Price	Qty.
SMA	ZADC-10-17W-S(+)	\$49.95 ea.	(1-9)

+ RoHS compliant in accordance with EU Directive (2002/95/EC)

The +Suffix identifies RoHS Compliance. See our web site for RoHS Compliance methodologies and qualifications.

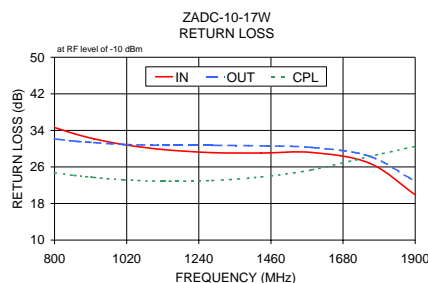
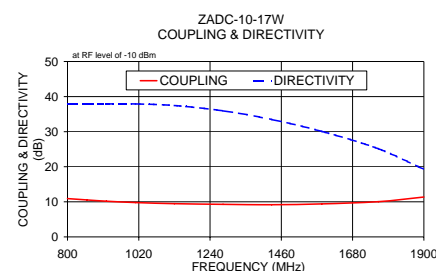
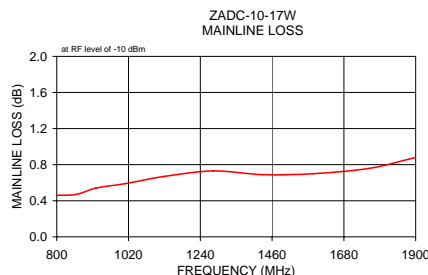
Directional Coupler Electrical Specifications

FREQ. RANGE (MHz)	COUPLING (dB)		MAINLINE LOSS ¹ (dB)		DIRECTIVITY (dB)		VSWR (:1)	POWER INPUT (W)
	Nom.	Flatness	Typ.	Max.	Typ.	Min.		
f _L -f _U								
800-1900	10.2±1.0	±1.5	0.8	1.3	24	14	1.2	5

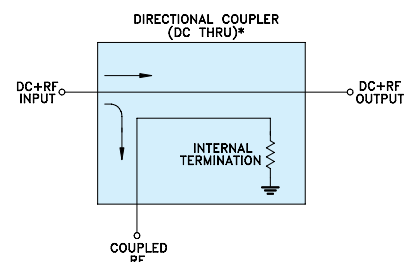
1. Mainline loss includes theoretical power loss at coupled port.

Typical Performance Data

Frequency (MHz)	Mainline Loss (dB) In-Out	Coupling (dB) In-Cpl	Directivity (dB)	Return Loss (dB)		
				In	Out	Cpl
800.00	0.46	10.91	37.84	34.63	32.15	24.73
860.00	0.47	10.53	37.84	33.28	31.66	24.16
920.00	0.54	10.17	37.90	32.15	31.33	23.71
1010.00	0.59	9.79	37.92	30.90	30.94	23.20
1130.00	0.67	9.47	37.46	29.82	30.75	22.90
1280.00	0.73	9.27	35.95	29.13	30.74	23.04
1430.00	0.69	9.17	33.48	29.05	30.62	23.82
1585.00	0.70	9.41	30.07	29.16	30.26	25.37
1760.00	0.76	10.04	25.11	26.85	28.37	28.28
1900.00	0.88	11.37	19.28	19.91	22.86	30.51



Electrical Schematic



* ELECTRICAL SCHEMATIC FOR DIRECTIONAL COUPLER THAT IS DESIGNED WITHOUT INTERNAL TRANSFORMERS.

Mini-Circuits
ISO 9001 ISO 14001 AS 9100 CERTIFIED
IF/RF MICROWAVE COMPONENTS

For detailed performance specs & shopping online see web site

P.O. Box 350166, Brooklyn, New York 11235-0003 (718) 934-4500 Fax (718) 332-4661 The Design Engineers Search Engine Provides ACTUAL Data Instantly at minicircuits.com

Notes: 1. Performance and quality attributes and conditions not expressly stated in this specification sheet are intended to be excluded and do not form a part of this specification sheet. 2. Electrical specifications and performance data contained herein are based on Mini-Circuit's applicable established test performance criteria and measurement instructions. 3. The parts covered by this specification sheet are subject to Mini-Circuits standard limited warranty and terms and conditions (collectively, "Standard Terms"); Purchasers of this part are entitled to the rights and benefits contained therein. For a full statement of the Standard Terms and the exclusive rights and remedies thereunder, please visit Mini-Circuits' website at www.minicircuits.com/MCLStore/terms.jsp.

REV. F
M119986
ED-7294/3
ZADC-10-17W
LC/TD/CP/AM
090915