

Coaxial Frequency Mixer

Level 7 (LO Power +7 dBm) 1 to 1000 MHz

ZAD-2+



Maximum Ratings

Operating Temperature	-55°C to 100°C
Storage Temperature	-55°C to 100°C
RF Power	50mW
IF Current	40mA

Coaxial Connections

LO	1
RF	3
IF	2

Features

- low conversion loss, 5.66 dB typ.
- good isolation, 35 dB typ.
- wideband, 1 to 1000 MHz
- rugged shielded case

Applications

- cellular
- VHF/UHF
- instrumentation

CASE STYLE: M22

Connectors	Model	Price	Qty.
BNC	ZAD-2+	\$49.95 ea.	(1-9)
BRACKET (OPTION "B")		\$5.00	(1+)
BRACKET (OPTION "BR")		\$1.50	(1+)

+ RoHS compliant in accordance with EU Directive (2002/95/EC)

The +Suffix has been added in order to identify RoHS Compliance. See our web site for RoHS Compliance methodologies and qualifications.

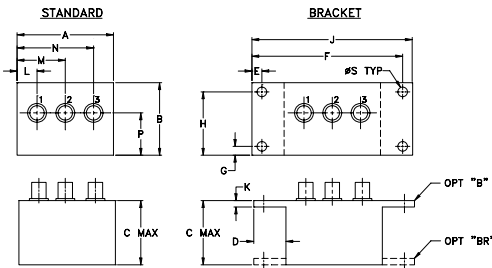
Electrical Specifications

FREQUENCY (MHz)		CONVERSION LOSS (dB)				LO-RF ISOLATION (dB)						LO-IF ISOLATION (dB)						
LO/RF	IF	Mid-Band		Total Range		L		M		U		L		M		U		
f_L - f_U	\bar{X}	σ	Max.	Max.	Typ.	Min.	Typ.	Min.	Typ.	Min.	Typ.	Min.	Typ.	Min.	Typ.	Min.	Typ.	Min.
1-1000	0.5-500	5.66	0.07	7.5	8.5	45	30	35	20	30	20	45	30	35	20	30	20	

1 dB COMP.: +1 dBm typ.

L = low range [f_L to $10 f_L$] M = mid range [$10 f_L$ to $f_U/2$] U = upper range [$f_U/2$ to f_U]
m = mid band [$2f_L$ to $f_U/2$]

Outline Drawing



Outline Dimensions (inch/mm)

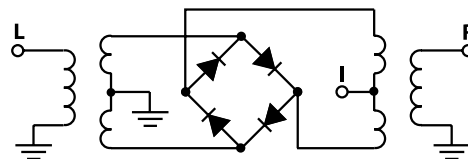
A	B	C	D	E	F	G	H
2.25	1.38	1.24	.50	.150	3.100	.138	1.238
57.15	35.05	31.50	12.70	3.81	78.74	3.51	31.45

J	K	L	M	N	P	S	wt
3.25	.10	.40	1.15	1.86	.64	.150	grams
82.55	2.54	10.16	29.21	47.24	16.26	3.81	74.0

Typical Performance Data

Frequency (MHz)		Conversion Loss (dB)	Isolation L-R (dB)	Isolation L-I (dB)	VSWR RF Port (:1)	VSWR LO Port (:1)
RF	LO	LO +7dBm	LO +7dBm	LO +7dBm	LO +7dBm	LO +7dBm
1.00	31.00	5.81	62.40	66.60	1.73	3.13
10.00	40.00	5.74	67.00	67.00	1.73	2.99
20.00	50.00	5.87	63.37	67.00	1.73	3.08
50.00	80.00	5.77	55.36	58.05	1.74	2.94
100.00	70.00	5.79	49.04	52.36	1.80	2.86
160.32	130.32	5.85	45.18	48.76	1.86	2.78
200.00	170.00	5.92	43.67	47.23	1.97	2.72
284.57	254.57	5.95	41.08	44.56	2.06	2.74
346.69	316.69	6.00	39.04	43.59	2.17	2.74
408.82	378.82	6.15	36.94	43.85	2.23	2.85
500.00	470.00	6.25	35.65	41.57	2.21	2.86
533.07	503.07	6.19	34.41	42.87	2.11	2.92
595.20	565.20	5.96	33.15	37.76	1.98	2.94
688.39	658.39	5.57	31.77	38.59	1.78	3.02
750.51	720.51	5.59	30.90	40.39	1.66	3.13
800.00	770.00	5.60	30.50	41.73	1.56	3.33
843.70	813.70	5.64	30.24	41.84	1.55	3.40
905.83	875.83	5.62	28.94	47.26	1.57	3.45
967.95	937.95	5.81	28.12	35.84	1.56	3.47
1000.00	970.00	6.10	27.73	32.72	1.41	3.30

Electrical Schematic



Mini-Circuits
ISO 9001 ISO 14001 CERTIFIED

ALL NEW
minicircuits.com

P.O. Box 350166, Brooklyn, New York 11235-0003 (718) 934-4500 Fax (718) 332-4661 For detailed performance specs & shopping online see Mini-Circuits web site



The Design Engineers Search Engine Provides ACTUAL Data Instantly From MINI-CIRCUITS At: www.minicircuits.com

RF/IF MICROWAVE COMPONENTS

REV. B
M113397
ZAD-2+
DJ/TD/CP/AM
080103
Page 1 of 2

