

# Coaxial Frequency Mixer

Level 7 (LO Power +7 dBm) 0.5 to 500 MHz

## ZAD-1+



### Maximum Ratings

Operating Temperature	-55°C to 100°C
Storage Temperature	-55°C to 100°C
RF Power	50mW
IF Current	40mA

### Coaxial Connections

LO	1
RF	3
IF	2

### Features

- low conversion loss, 5.24 dB typ.
- high L-R isolation, 45 dB typ.
- rugged shielded case

### Applications

- VHF/UHF
- instrumentation

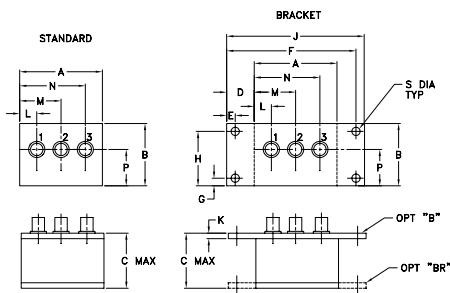
CASE STYLE: M22

Connectors	Model	Price	Qty.
BNC	ZAD-1+	\$43.95 ea.	(1-9)
BRACKET (OPTION "B")		\$5.00	(1+)
BRACKET (OPTION "BR")		\$1.50	(1+)

**+ RoHS compliant in accordance with EU Directive (2002/95/EC)**

The +Suffix has been added in order to identify RoHS Compliance. See our web site for RoHS Compliance methodologies and qualifications.

### Outline Drawing



### Outline Dimensions (inch/mm)

A	B	C	D	E	F	G	H
2.25	1.38	1.24	.50	.150	3.100	.138	1.238
57.15	35.05	31.50	12.70	3.81	78.74	3.51	31.45

J	K	L	M	N	P	S	wt
3.25	.10	.40	1.15	1.86	.64	.150	grams
82.55	2.54	10.16	29.21	47.24	16.26	3.81	74.0

### Electrical Specifications

FREQUENCY (MHz)	CONVERSION LOSS (dB)				LO-RF ISOLATION (dB)						LO-IF ISOLATION (dB)						
	LO/RF	IF	Mid-Band m	Total Range Max.	L		M		U		L		M		U		
$f_L - f_U$	$\bar{X}$	$\sigma$			Typ.	Min.	Typ.	Min.	Typ.	Min.	Typ.	Min.	Typ.	Min.	Typ.	Min.	
0.5-500	DC-500	5.24	0.10	7.0	8.5	50	45	45	30	35	25	45	35	40	25	30	20

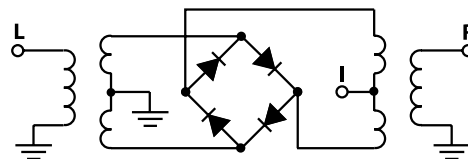
1 dB COMP.: +1 dBm typ.

L = low range [ $f_L$  to  $10 f_L$ ] M = mid range [ $10 f_L$  to  $f_U/2$ ] U = upper range [ $f_U/2$  to  $f_U$ ]  
m = mid band [ $2f_L$  to  $f_U/2$ ]

### Typical Performance Data

Frequency (MHz)	Conversion Loss (dB)	Isolation L-R (dB)	Isolation L-I (dB)	VSWR RF Port (:1)	VSWR LO Port (:1)
0.50	30.50	7.29	>67.00	1.21	1.98
1.00	31.00	6.89	>67.00	1.03	1.93
2.00	32.00	6.49	>67.00	1.02	1.96
5.00	35.00	6.01	>67.00	1.06	1.86
10.00	40.00	5.99	>67.00	1.10	1.83
20.00	50.00	6.02	>67.00	1.13	1.87
32.73	62.73	5.96	59.27	1.15	1.88
50.00	80.00	5.91	56.01	1.19	1.91
64.95	94.95	5.87	53.83	1.23	1.91
100.00	70.00	5.81	49.90	1.29	1.92
161.63	131.63	5.84	44.60	1.35	1.91
200.00	170.00	5.99	41.47	1.42	1.99
226.08	196.08	5.95	40.62	1.49	1.99
258.31	228.31	5.89	39.44	1.56	1.99
306.65	276.65	5.99	37.26	1.65	2.03
354.99	324.99	6.23	34.94	1.74	2.16
403.33	373.33	6.32	33.70	1.81	2.20
451.66	421.66	6.68	33.66	1.93	2.27
483.89	453.89	7.17	34.17	2.00	2.25
500.00	470.00	7.25	34.51	2.03	2.26

### Electrical Schematic



**Mini-Circuits**  
ISO 9001 ISO 14001 CERTIFIED

ALL NEW  
minicircuits.com

P.O. Box 350166, Brooklyn, New York 11235-0003 (718) 934-4500 Fax (718) 332-4661 For detailed performance specs & shopping online see Mini-Circuits web site



The Design Engineers Search Engine Provides ACTUAL Data Instantly From MINI-CIRCUITS At: [www.minicircuits.com](http://www.minicircuits.com)

RF/IF MICROWAVE COMPONENTS

REV. B  
M108294  
ZAD-1+  
DJ/TD/CP/AM  
070828  
Page 1 of 2

