

Coaxial

Power Splitter/Combiner

ZA3PD-4+

3 Way-0° 50Ω 2000 to 4200 MHz



SMA version shown
CASE STYLE: CC51

Maximum Ratings

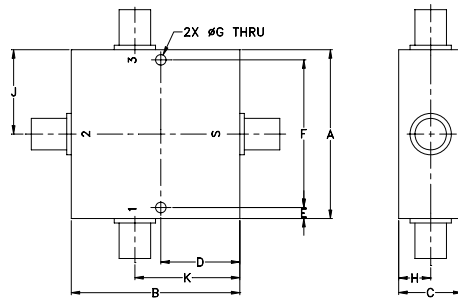
Operating Temperature	-55°C to 100°C
Storage Temperature	-55°C to 100°C
Power Input (as a splitter)	10W max.
Internal Dissipation	0.375W max.

Permanent damage may occur if any of these limits are exceeded.

Coaxial Connections

SUM PORT	S
PORT 1	1
PORT 2	2
PORT 3	3

Outline Drawing



Outline Dimensions (inch/mm)

A	B	C	D	E	F
2.00	2.00	.75	.938	.13	1.750
50.80	50.80	19.05	23.83	3.30	44.45
G	H	J	K	wt	
.125	.38	1.00	1.25	grams	
3.18	9.65	25.40	31.75	200.0	

Features

- very wideband, 2000 to 4200 MHz
- low insertion loss, 0.7 dB typ.
- up to 10W power input as splitter
- rugged, shielded

Applications

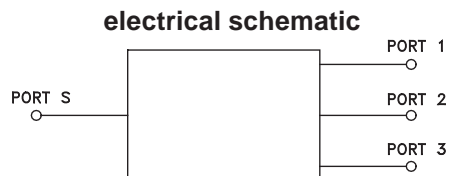
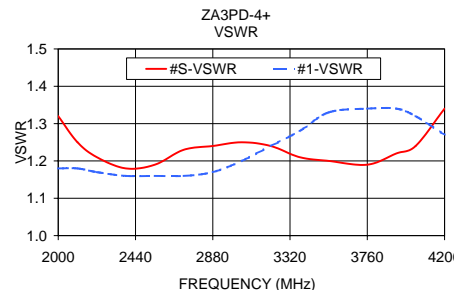
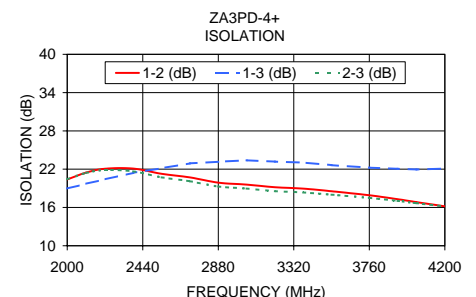
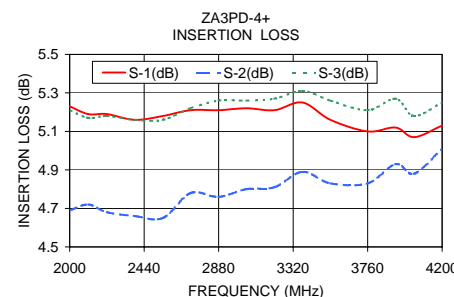
- ISM
- satellite communication
- MMDS
- instrumentation

Electrical Specifications

FREQ. RANGE (MHz)	ISOLATION (dB)		INSERTION LOSS (dB) ABOVE 4.8 dB		PHASE UNBALANCE (Degrees)	AMPLITUDE UNBALANCE (dB)
	Typ.	Min.	Typ.	Max.	Max.	Max.
f_L - f_U						
2000-4200	18	14	0.7	1.0	—	0.9

Typical Performance Data

Freq. (MHz)	Insertion Loss (dB)			Amp. Unbal. (dB)	Isolation (dB)			Phase Unbal. (deg.)	VSWR S	VSWR 1	VSWR 2	VSWR 3
	S-1	S-2	S-3		1-2	1-3	2-3					
2000.00	5.23	4.69	5.21	0.54	20.39	18.97	20.41	3.49	1.32	1.18	1.67	1.21
2110.00	5.19	4.72	5.17	0.47	21.47	19.71	21.42	3.81	1.25	1.18	1.64	1.20
2220.00	5.19	4.68	5.18	0.50	22.07	20.40	21.86	4.23	1.21	1.17	1.60	1.20
2385.00	5.16	4.66	5.16	0.50	22.09	21.43	21.66	3.68	1.18	1.16	1.54	1.18
2550.00	5.18	4.65	5.16	0.53	21.28	22.15	20.72	4.52	1.19	1.16	1.49	1.16
2715.00	5.21	4.78	5.22	0.44	20.71	22.92	20.11	3.95	1.23	1.16	1.44	1.15
2880.00	5.21	4.76	5.26	0.50	19.89	23.16	19.29	4.03	1.24	1.17	1.40	1.16
3045.00	5.22	4.80	5.26	0.47	19.58	23.39	18.97	3.95	1.25	1.20	1.37	1.18
3210.00	5.21	4.81	5.27	0.46	19.17	23.19	18.56	3.82	1.24	1.24	1.34	1.20
3375.00	5.25	4.89	5.31	0.43	18.95	23.03	18.35	3.97	1.21	1.28	1.33	1.22
3540.00	5.16	4.83	5.26	0.43	18.54	22.64	18.00	3.78	1.20	1.33	1.32	1.25
3760.00	5.10	4.83	5.21	0.38	17.91	22.24	17.50	3.99	1.19	1.34	1.29	1.24
3925.00	5.12	4.93	5.27	0.34	17.30	22.06	17.03	3.71	1.22	1.34	1.27	1.21
4035.00	5.07	4.88	5.18	0.30	16.83	21.96	16.67	3.68	1.24	1.32	1.25	1.18
4200.00	5.13	5.01	5.25	0.24	16.18	22.10	16.17	3.58	1.34	1.27	1.21	1.13



Mini-Circuits®
ISO 9001 ISO 14001 AS 9100 CERTIFIED
IFIRF MICROWAVE COMPONENTS

For detailed performance specs & shopping online see web site

P.O. Box 350166, Brooklyn, New York 11235-0003 (718) 934-4500 Fax (718) 332-4661 The Design Engineers Search Engine Provides ACTUAL Data Instantly at minicircuits.com

Notes: 1. Performance and quality attributes and conditions not expressly stated in this specification sheet are intended to be excluded and do not form a part of this specification sheet. 2. Electrical specifications and performance data contained herein are based on Mini-Circuit's applicable established test performance criteria and measurement instructions. 3. The parts covered by this specification sheet are subject to Mini-Circuits standard limited warranty and terms and conditions (collectively, "Standard Terms"); Purchasers of this part are entitled to the rights and benefits contained therein. For a full statement of the Standard Terms and the exclusive rights and remedies thereunder, please visit Mini-Circuits' website at www.minicircuits.com/MCLStore/terms.jsp.

REV. C
M113397
ZA3PD-4
HY/TD/CP/JAM
090826