

Coaxial Power Splitter/Combiner

ZA3PD-1.5+ ZA3PD-1.5

3 Way-0° 50Ω 750 to 1500 MHz



SMA version shown
CASE STYLE: CC51

Maximum Ratings

Operating Temperature	-55°C to 100°C
Storage Temperature	-55°C to 100°C
Power Input (as a splitter)	10W max.
Internal Dissipation	0.375W max.

Permanent damage may occur if any of these limits are exceeded.

Coaxial Connections

SUM PORT	S
PORT 1	1
PORT 2	2
PORT 3	3

Features

- up to 10W power input as splitter
- low insertion loss, 0.3 dB typ.
- rugged, shielded case

Applications

- cellular
- satellite distribution
- communication system

Connectors	Model	Price	Qty.
SMA	ZA3PD-1.5-S(+)	\$89.95	(1-9)
N-TYPE	ZA3PD-1.5-N(+)	\$89.95	(1-9)

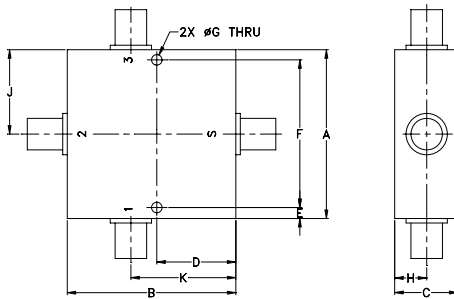
+ RoHS compliant in accordance with EU Directive (2002/95/EC)

The +Suffix identifies RoHS Compliance. See our web site for RoHS Compliance methodologies and qualifications.

Electrical Specifications

FREQ. RANGE (MHz)	ISOLATION (dB)		INSERTION LOSS (dB) ABOVE 4.8 dB		AMPLITUDE UNBALANCE (dB)
	Typ.	Min.	Typ.	Max.	
f_L - f_U					Max.
750-1500	20	14	0.3	0.7	0.4

Outline Drawing



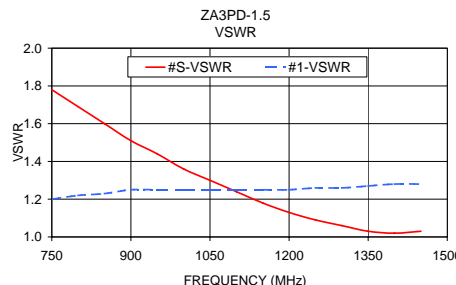
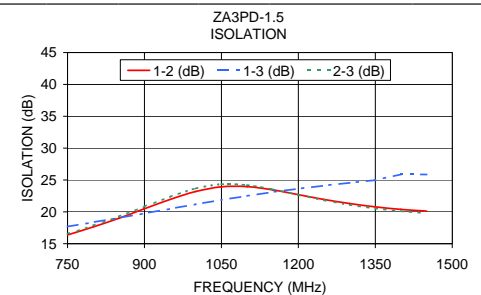
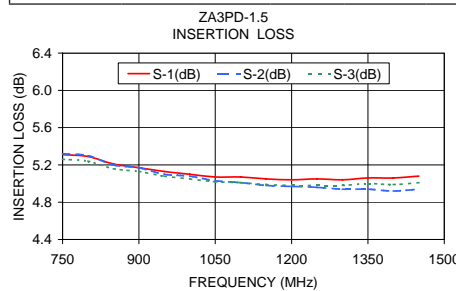
Outline Dimensions (inch/mm)

A	B	C	D	E	F
2.00	2.00	.75	.938	.13	1.750
50.80	50.80	19.05	23.83	3.30	44.45

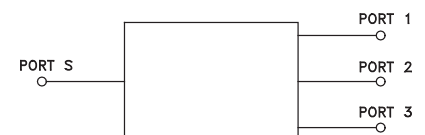
G	H	J	K	wt
.125	.38	1.00	1.25	grams
3.18	9.65	25.40	31.75	200.0

Typical Performance Data

Freq. (MHz)	Insertion Loss (dB)			Amp. Unbal. (dB)	Isolation (dB)			Phase Unbal. (deg.)	VSWR S	VSWR 1	VSWR 2	VSWR 3
	S-1	S-2	S-3		1-2	1-3	2-3					
750.00	5.31	5.32	5.26	0.06	16.38	17.68	16.56	1.52	1.78	1.20	1.65	1.20
800.00	5.29	5.30	5.24	0.06	17.64	18.37	17.86	1.64	1.69	1.22	1.66	1.22
850.00	5.21	5.20	5.16	0.05	18.99	19.05	19.28	1.65	1.60	1.23	1.66	1.23
900.00	5.17	5.17	5.13	0.04	20.49	19.77	20.84	1.77	1.51	1.25	1.66	1.24
950.00	5.13	5.10	5.08	0.04	21.94	20.48	22.37	1.79	1.44	1.25	1.64	1.24
1000.00	5.10	5.08	5.05	0.05	23.20	21.20	23.67	1.91	1.36	1.25	1.62	1.24
1050.00	5.07	5.03	5.02	0.05	23.93	21.88	24.33	2.00	1.30	1.25	1.60	1.24
1100.00	5.07	5.01	5.01	0.06	23.96	22.51	24.21	2.08	1.24	1.25	1.57	1.24
1150.00	5.05	4.98	4.99	0.07	23.45	23.12	23.54	2.15	1.18	1.25	1.54	1.23
1200.00	5.04	4.97	4.98	0.07	22.70	23.63	22.66	2.25	1.13	1.25	1.52	1.23
1250.00	5.05	4.96	4.98	0.09	21.95	24.13	21.83	2.38	1.09	1.26	1.49	1.24
1300.00	5.04	4.94	4.98	0.11	21.30	24.56	21.10	2.49	1.06	1.26	1.47	1.24
1350.00	5.06	4.94	5.00	0.11	20.78	24.99	20.54	2.52	1.03	1.27	1.46	1.25
1400.00	5.06	4.92	4.99	0.13	20.38	25.90	20.11	2.63	1.02	1.28	1.45	1.26
1450.00	5.08	4.94	5.01	0.14	20.12	25.87	19.81	2.67	1.03	1.28	1.44	1.26
1500.00	5.08	4.92	5.02	0.16	19.90	26.38	19.57	2.82	1.03	1.28	1.43	1.26



electrical schematic



Mini-Circuits®
ISO 9001 ISO 14001 AS 9100 CERTIFIED
IF/RF MICROWAVE COMPONENTS

For detailed performance specs & shopping online see web site

P.O. Box 350166, Brooklyn, New York 11235-0003 (718) 934-4500 Fax (718) 332-4661 The Design Engineers Search Engine Provides ACTUAL Data Instantly at minicircuits.com

Notes: 1. Performance and quality attributes and conditions not expressly stated in this specification sheet are intended to be excluded and do not form a part of this specification sheet. 2. Electrical specifications and performance data contained herein are based on Mini-Circuit's applicable established test performance criteria and measurement instructions. 3. The parts covered by this specification sheet are subject to Mini-Circuits standard limited warranty and terms and conditions (collectively, "Standard Terms"); Purchasers of this part are entitled to the rights and benefits contained therein. For a full statement of the Standard Terms and the exclusive rights and remedies thereunder, please visit Mini-Circuits' website at www.minicircuits.com/MCLStore/terms.jsp.

REV. A
M122933
ZA3PD-1.5
HY/CP/AM
090826