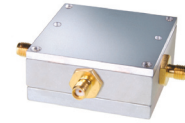


Coaxial

Power Splitter/Combiner

ZA3PD-1

3 Way-0° 50Ω 500 to 1000 MHz



SMA version shown
CASE STYLE: CC51

Maximum Ratings

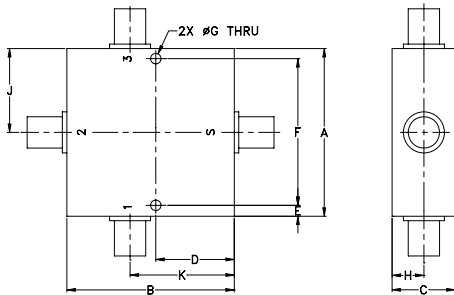
Operating Temperature	-55°C to 100°C
Storage Temperature	-55°C to 100°C
Power Input (as a splitter)	10W max.
Internal Dissipation	0.375W max.

Permanent damage may occur if any of these limits are exceeded.

Coaxial Connections

SUM PORT	S
PORT 1	1
PORT 2	2
PORT 3	3

Outline Drawing



Outline Dimensions (inch/mm)

A	B	C	D	E	F
2.00	2.00	.75	.938	.13	1.750
50.80	50.80	19.05	23.83	3.30	44.45
G	H	J	K	wt	
.125	.38	1.00	1.25	grams	
3.18	9.65	25.40	31.75	200.0	

Features

- wideband, 500 to 1000 MHz
- up to 10W power input as splitter
- low insertion loss, 0.3 dB typ.
- rugged, shielded case

Applications

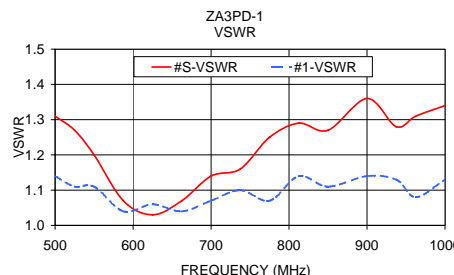
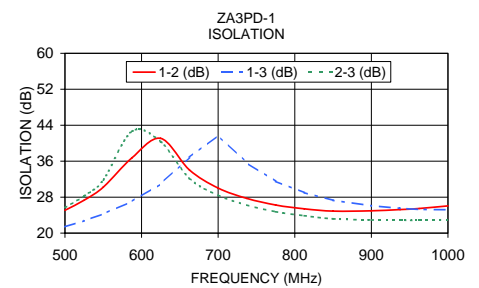
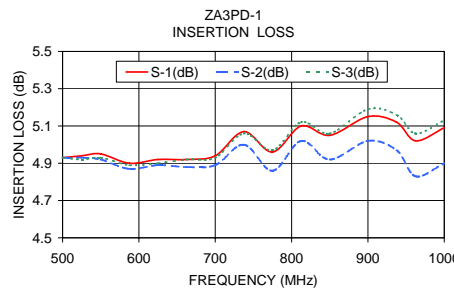
- UHF
- cellular
- communication system
- instrumentation

Electrical Specifications

FREQ. RANGE (MHz)	ISOLATION (dB)		INSERTION LOSS (dB) ABOVE 4.8 dB		AMPLITUDE UNBALANCE (dB)
	Typ.	Min.	Typ.	Max.	
f_L - f_U					Max.
500-1000	20	14	0.3	0.6	0.4

Typical Performance Data

Freq. (MHz)	Insertion Loss (dB)			Amp. Unbal. (dB)	Isolation (dB)			Phase Unbal. (deg.)	VSWR S	VSWR 1	VSWR 2	VSWR 3
	S-1	S-2	S-3		1-2	1-3	2-3					
500.00	4.93	4.93	4.93	0.00	25.07	21.42	25.67	0.50	1.31	1.14	1.12	1.14
525.00	4.94	4.93	4.92	0.02	27.33	22.75	28.26	0.25	1.27	1.11	1.08	1.11
550.00	4.95	4.92	4.93	0.03	30.22	24.28	31.79	0.40	1.20	1.11	1.08	1.11
587.50	4.90	4.87	4.89	0.03	36.77	27.06	42.63	0.43	1.07	1.04	1.06	1.04
625.00	4.92	4.89	4.90	0.04	41.08	30.93	40.30	0.30	1.03	1.06	1.04	1.05
662.50	4.92	4.88	4.92	0.04	34.04	36.85	32.18	0.41	1.07	1.04	1.07	1.03
700.00	4.94	4.89	4.93	0.05	30.02	41.73	28.45	0.34	1.14	1.07	1.12	1.06
737.50	5.07	5.00	5.06	0.07	27.72	35.61	26.26	0.22	1.16	1.10	1.12	1.09
775.00	4.96	4.86	4.97	0.11	26.26	31.53	24.77	0.29	1.25	1.07	1.14	1.07
812.50	5.10	5.02	5.12	0.10	25.41	29.00	23.87	0.41	1.29	1.14	1.20	1.13
850.00	5.05	4.92	5.06	0.13	24.90	27.30	23.19	0.05	1.27	1.11	1.15	1.11
900.00	5.15	5.02	5.19	0.16	24.96	26.09	22.94	0.53	1.36	1.14	1.23	1.14
937.50	5.12	4.97	5.16	0.19	25.24	25.53	22.90	0.27	1.28	1.13	1.18	1.13
962.50	5.02	4.83	5.06	0.23	25.47	25.28	22.85	0.41	1.31	1.08	1.16	1.09
1000.00	5.09	4.90	5.13	0.23	26.05	25.22	23.01	0.69	1.34	1.13	1.22	1.13



electrical schematic



For detailed performance specs & shopping online see web site

P.O. Box 350166, Brooklyn, New York 11235-0003 (718) 934-4500 Fax (718) 332-4661 The Design Engineers Search Engine Provides ACTUAL Data Instantly at minicircuits.com

Notes: 1. Performance and quality attributes and conditions not expressly stated in this specification sheet are intended to be excluded and do not form a part of this specification sheet. 2. Electrical specifications and performance data contained herein are based on Mini-Circuit's applicable established test performance criteria and measurement instructions. 3. The parts covered by this specification sheet are subject to Mini-Circuits standard limited warranty and terms and conditions (collectively, "Standard Terms"); Purchasers of this part are entitled to the rights and benefits contained therein. For a full statement of the Standard Terms and the exclusive rights and remedies thereunder, please visit Mini-Circuits' website at www.minicircuits.com/MCLStore/terms.jsp.

REV. OR
M94793
ZA3PD-1
HY/TD/CP
090826